

  
**COLEMAN ANGUS**  
YOUR MATERNAL SOURCE

& **TREXLER** *Angus*

# ANNUAL *Performance Tested* BULL SALE

TUESDAY • FEBRUARY 15, 2022 • 1:00 P.M. (MST)

FIVE VALLEYS LIVESTOCK • MISSOULA, MONTANA

## SELLING 200 SERVICE-AGE BULLS

125 18-Month-Old Bulls • 75 Big, Stout, Yearling Bulls  
Many of these bulls will work on heifers.

### *Featuring Sons of:*

**Coleman Bravo 6313** – Selling 42 Sons  
**Coleman Charlo 0256** – Selling 12 Sons  
**SAV Renown 3439** – Selling 20 Sons  
**Coleman Marshall 7120** – Selling 10 Sons  
**Coleman Rebound 7220** – Selling 12 Sons

### ALL BULLS HAVE:

- Free Nationwide Delivery (see inside front cover for details)
- Passed A Semen Test
- Been Freeze Branded
- Had Foot Rot Vaccine
- Been Tested Free of PI-BVD
- First Breeding Season Guarantee



COME BUY THE PROGRAM *"The Cowboy's Kind"* BULL SALE

Sale will be broadcast live via Superior Livestock Auction  
(see inside back cover for details)



If you would like to receive a DVD of the bulls, let us know  
and we will be happy to send you one.

## ANNUAL *Performance Tested* BULL SALE

Tuesday • February 15, 2022 • 1:00 p.m. (MST)

Five Valleys Livestock • Missoula, Montana

**SALE LOCATION:**

Five Valleys Livestock, 8598 Robbins Rd,  
Missoula, MT 59808

**INSPECTION:**

Cattle may be inspected at any time prior to the sale.

**SALE DAY PHONES:**

(406) 728-3052 • (406) 240-2751  
(406) 363-8818 • (406) 833-0117

**LUNCH** 12 p.m. Sale Time 1 p.m.

**AUCTIONEER** Joe Goggins • (406) 861-5664

**PRESS REPRESENTATIVES:**

Kurt Kangas \_\_\_\_\_ (406) 366-4190  
ANGUS JOURNAL

John Goggins (406) 698-4159 or (406) 373-5000  
WESTERN LIVESTOCK REPORTER

Andy Rest \_\_\_\_\_ (406) 254-7576  
CATTLE BUSINESS WEEKLY

Devin Murnin \_\_\_\_\_ (406) 696-1502  
WESTERN LIVESTOCK JOURNAL

**BIDS:**

Bids can be phoned to our publication representatives or to:

Larry Coleman \_\_\_\_\_ (406) 240-2751  
Jeremy Haag \_\_\_\_\_ (406) 833-0117  
Larry Trexler \_\_\_\_\_ (406) 363-8818

**CONSULTANTS:**

Mike Marlow. \_\_\_\_\_ (405) 880-0108  
Kent McCune \_\_\_\_\_ (817) 602-8629  
Scott Bohrsen \_\_\_\_\_ (403) 370-3010  
Kiley McKinna \_\_\_\_\_ (402) 350-3447  
Wiley Fanta \_\_\_\_\_ (615) 287-0751  
Randy Ratliff \_\_\_\_\_ (615) 330-2735

***Please bring this sale book with you sale day.***

**SIGHT UNSEEN BUYERS PROGRAM:** If you cannot attend the sale and want to purchase bulls, please give us a call. We will be glad to help you with your order. We guarantee 100% satisfaction on all orders.

**TRUCKING:** Free delivery up to 500 miles with total purchase of \$2,500 or more. There is also a free nationwide delivery with total purchases over \$5,000. \$100 discount per bull if you pick it up on sale day. Haul your neighbor's bulls home and get \$100/hd discount on them.

**HEALTH:** Interstate health papers are furnished on all cattle selling.

**INTEREST:** Coleman Angus and Trexler Angus are retaining one-half revenue sharing semen interest in every bull selling in this sale. Full possession and full salvage value sells on all bulls.

**SALE ORDER:** Bulls will sell in numerical order.

**TERMS & CONDITIONS:** Cattle will sell under the suggested Terms and Conditions of the American Angus Association ([http://www.angus.org/Pub/suggested\\_sale\\_terms.pdf](http://www.angus.org/Pub/suggested_sale_terms.pdf)). Announcements from the block will take precedence over information in the sale book.

**VOLUME BULL DISCOUNT**

5 bulls 5% - 6 bulls 6% - Up to 10 bulls at 10%

**FIRST BREEDING SEASON GUARANTEE:**

We offer a full breeding season guarantee for any injury that would keep the bull from being a breeder for the first breeding season. If a problem occurs, we will give you a suitable replacement or you will receive full credit, minus the salvage value of the original bull, toward another purchase in next year's sale. The bulls that sell have passed a breeding soundness exam. We require that you notify the seller of the bull in case of injury. We also reserve the right to a second opinion by a veterinarian of our choice. In the situation where we need to bring the bull back to the ranch after delivery for our vet to examine, it's the buyer's responsibility to get the bull back to our ranch at their expense. We will pay to have our vet examine the bull again, if he passes the exam, it's the buyer's responsibility to come pick up the bull at our ranch at their expense.

**PERFORMANCE INFORMATION:**

**RATIOS:** All ratios are within contemporary groups.

**PATHFINDER** Sires and Dams are indicated by the # sign.

**FERTILITY:** The bulls will have a breeding soundness exam and fertility test by Dr. Leroy Hoversland. Scrotal measurements will be available sale day.

**ACCOMMODATIONS:**

C'Mon Inn \_\_\_\_\_ (406) 543-4600  
Wingate \_\_\_\_\_ (406) 541-8000  
Stone Creek Lodge \_\_\_\_\_ (406) 541-3600

**TRANSPORTATION:** Commercial air service is available for Missoula via Northwest, United Airlines and Delta.

VISIT the Angus Journal® Website, [www.angus.org](http://www.angus.org), and view this sale book online. References: American Angus Association®, AHIR®, AngusSource®, CAB®, Pathfinder®. EPDs contained in the original printed version of this sale book were current as of the printing date. Digital versions of this sale book online at [angus.org](http://angus.org) will have EPDs updated every Friday. Any PDFs downloaded from the website will contain EPDs current as of the date of the download.

Dear Cattlemen,

It is a pleasure to welcome you to our upcoming Coleman Angus/Trexler Angus Ranch Annual Performance Tested Bull Sale. Bull sale time is one of our favorite times of the year. We look forward to seeing our customers and friends, along with meeting some new customers and getting to know you and more about your operation. One of our goals is to make sure that these bulls go out and work for you, our customers. It is something we take very seriously. Our programs are totally committed to the commercial cowman. Every mating we make is designed to leave bulls that will work for you and make your ranch profitable. As you study the EPDs and data in this sale book, you can see that we are committed to raising cattle that are balanced. This is particularly important in today's world of big framed, extended growth, high carcass cattle that will not make momma cows. In the end it is you the commercial cowman that suffers when you try to make these cattle work in the real cattle world. Sad to say, there are many terminal cattle out there today.

This is the most powerful and consistent set of bulls that we have ever sold. These bulls are designed with extra thickness, fleshing ability, length and will keep their condition while breeding your cows. They are the "Cowboy's Kind." These bulls have been developed on a high roughage ration for moderate gain. It is our goal to have these bulls remain sound, problem-free and to become long term genetic contributors to the herds that they go

into. Our fall bulls after weaning run on grass all summer, no supplements. We believe that this is the best and soundest way to develop bulls. After weaning the spring bulls, we bring the fall bulls in the feedlot with them. The bulls are never pushed hard, we feed them to gain 3#s per day. The quickest way to ruin a bull is to feed it too much. They may look really good on sale day and also when you turn them out, but it is only a matter of time before their feet and legs start going bad. It has been good to get data back from our customers on their calves in the feedlots and on the rail. Consistently calves sired by our bulls have been the most profitable sets of calves in those feedlots and on the rail. We know that our bulls will leave a top set of replacement females, especially nice to hear that they will be at the top end in all segments of the industry. We have had many customers tell us about the extra years they are getting out of their Coleman & Trexler Bulls. It puts money in their pockets.

We believe that it all starts with the mother cow. We sort our cows hard for economically sound traits: longevity, fertility, efficiency, fleshing ability, disposition, udder quality, and structural soundness. We would welcome anyone to come and see the cows that these bulls are out of. We know that if you are keeping replacement females, it is vital that you look at the mothers to the bulls. Many of the bulls selling have photos of the mothers in the sale book. A large number of these bulls are from our embryo program. These bulls are backed by generations of highly productive females that have stood the test of time. We will once again be offering many full brothers, three-quarter brothers, and half-brothers. The easiest way to get consistency in your cowherd is to buy bulls that are bred alike. We have had great feedback from our customers that have bought these full brothers about how consistent their calf crop is and the consistency in the daughters they have retained in their herd.

Please note that there is free nationwide delivery on all of the bulls selling; \$100 discount per bull if you pick it up on sale day. Haul your neighbor's bulls home and get \$100/head discount on them. We will start delivering the bulls the middle of March. We also offer a first breeding season guarantee on the bulls against anything. You do not need to purchase insurance on them, just let us know if there is any problem, and we will take care of it. We feel it is the best guarantee in the business, (Our goal, is to treat you like we would want to be treated if a problem ever occurred)and have had our customers tell us that. Make sure and visit with us about it if you are not aware of it. Look at the inside front cover for more information. We offer a volume discount on the bulls; 5% on 5 bulls bought, 6% on 6 and up to 10% on 10 or more bulls bought.

It has been a pleasure hearing all of the positive feedback on our bulls. We look forward to seeing you all on sale day. Please feel free to call on us with any questions. Videos of the bulls are available to look at on our YouTube channel [www.youtube.com/user/colemanangusranch](http://www.youtube.com/user/colemanangusranch). If you would prefer to have a DVD available to look at all of the bulls, please let us know. We would be happy to send you one. Sale will be live on Superior Productions (see Inside back cover for details) for those unable to make it to the sale. Check our web site ([www.colemanangus.com](http://www.colemanangus.com)) as we get closer to the sale, we will have the update sheet on there. Check us out on Facebook also. There are lots of new photos, videos of the bulls, family, and what is happening on our ranch.

Thanks

Larry & Dee Coleman | Jeremy & Jenny Haag | Larry & Peggy Trexler



THE COLEMAN FAMILY



THE TREXLER FAMILY

THE HAAG FAMILY



# % COLEMAN ANGUS



## COLEMAN BRAVO 6313

**SIRE OF LOTS** 8, 10, 14, 22, 23, 24, 25, 31, 32, 36, 37, 44, 46, 48, 49, 52, 55, 57, 60, 64, 76, 77, 84, 86, 88, 102, 111, 120, 129, 137, 141, 142, 144, 145, 161, 162, 165, 167, 169, AND 173.

## A COLEMAN BRAVO 6313

**BULL 18734838** TATTOO **6313** DOB: **07/04/16**  
 O C C Paxton 730P  
**Coleman Charlo 0256** O C C Focus 813F  
 16879074 Bohi Abigale 6014 O C C Blackbird 736K  
 Sitz Traveler 8180  
 S A V Abigale 6062  
 Connealy Lead On  
 Altune of Conanga 6104  
**Coleman Donna 714** Basin Rainmaker 654X  
 15706882 Coleman Donna 386 KMK Donna J311

CED	BEPD	WEPD	YEPD	SC	MILK	MARB	RE	\$M	\$W
15	-0.4	55	101	.90	22	.11	.38	90	60

- Coleman Bravo, a graduate of a past Coleman bull sale and the all-time, record-selling bull in the state of Montana that has captivated the globe in popularity. Bravo combines low birth weight genetics with tremendous performance and eye appeal. His daughters are some of the very best cattle on the ranch that flesh easy, have tremendous udders, and a great cow look.
- Bravo's dam is a staple in the program, Coleman Donna 714, who is a consistent producer with excellent maternal strength and proven power. She is the top income-producing female in the program and the mother of herd sires: Rock, Resolve, Playmaker, Summit, and Manning.
- The 2022 Coleman Angus Bull Sale will be highlighted by 42 direct Bravo progeny selling.



## S A V RENOWN 3439

**SIRE OF LOTS** 1, 2, 3, 6, 7, 13, 15, 16, 19, 20, 21, 26, 27, 33, 35, 39, 54, 112, 123, AND 154.

## B S A V RENOWN 3439

**BULL 17633839** TATTOO **3439** DOB: **01/07/2013**  
 R R Rito 707  
**Rito 707 of Ideal 3407 7075** Eriskay of Rollin Rock 3  
 13066860 Ideal 3407 of 1418 076 Ideal 1418 of 8103 4286  
 Ideal 076 of 692 8375  
 Sitz Traveler 8180  
 S A V 8180 Traveler 004  
**S A V Blackcap May 4136** Boyd Forever Lady 8003  
 14739095 S A V May 2397 S A F 598 Bando 5175  
 S A V May 7238

CED	BEPD	WEPD	YEPD	SC	MILK	MARB	RE	\$M	\$W
-2	2.8	70	125	.44	20	-.21	.82	56	66

- SAV Renown 3439 was the lead off bull of the 2014 SAV Sale and his progeny have excellent phenotype, performance, and superior structure. Renown is a full brother to Resource and Recharge and represents the best of the Rito 707 lineage known for fertility, fleshing ability, muscle, and high-quality feet.
- The 2022 Coleman Angus Bull Sale will showcase 20 direct progeny from Renown.



## COLEMAN PLAYMAKER 427

**SIRE OF LOTS** 41, 47, 87, 90, 92, 95, 96, 97, 132, 175, 177, AND 187

## C COLEMAN PLAYMAKER 427

**BULL 17914039** TATTOO **427** DOB: **01/18/14**  
 Boyd New Day 8005  
**GDAR Game Day 449** A A R New Trend  
 14691231 G D A R Miss Wix 474 S V F Forever Lady 57D  
 Tehama Band 207  
 G D A R Miss Wix 749  
 Connealy Lead On  
 Altune of Conanga 6104  
**Coleman Donna 714** Basin Rainmaker 654X  
 15706882 Coleman Donna 386 KMK Donna J311

CED	BEPD	WEPD	YEPD	SC	MILK	MARB	RE	\$M	\$W
7	-1.2	57	99	.79	25	-.13	.40	84	67

- Coleman Playmaker, a featured member of GENEX Beef AI Stud is an ultra-low birth weight bull that is sure shot calving ease. Playmaker has the unique combination of low birth with tremendous muscle and shape. He has true Aberdeen breed character with added balance and quality. His daughters are some of the high-ratioing cattle in the Coleman program.
- Coleman Donna 714, his mother, is the all-time, high income-producing cow in the Coleman herd. She has as much influence as any in the program and maternal brothers to Playmaker include: Bravo, Rock, Summit, and Resolve.
- The 2022 Coleman Angus Bull Sale will offer 14 calving ease sons of Playmaker.



## COLEMAN RESOLVE 7219

**SIRE OF LOTS** 4, 50, 59, 61, 75, 83, 89, 93, AND 94.

## D COLEMAN RESOLVE 7219

**BULL 19102305** TATTOO **7219** DOB: **06/27/17**  
 Rito 707 of Ideal 3407 7075  
**S A V Renown 3439** R R Rito 707  
 17633839 S A V Blackcap May 4136 Ideal 3407 of 1418 076  
 S A V 8180 Traveler 004  
 S A V May 2397  
 Connealy Lead On  
 Altune of Conanga 6104  
**Coleman Donna 714** Basin Rainmaker 654X  
 15706882 Coleman Donna 386 KMK Donna J311

CED	BEPD	WEPD	YEPD	SC	MILK	MARB	RE	\$M	\$W
7	1.8	73	129	1.13	26	-.17	.76	76	74

- Coleman Resolve 7219 is a true performance bull with tremendous thickness and depth of body in the cattleman's package. His daughters are feminine, beautiful uddered, and great mothers. He has a royally bred pedigree with the dominance of the Donna family and popular Blackcap May families.
- His dam is a third-generation donor in the Coleman program and is a herd leader with front pasture kind of phenotype and the mother to many herd sires including: Bravo, Playmaker, Summit, and Rock.
- The 2022 Coleman Angus Bull Sale will present 9 direct sons of this popular sire.

# REFERENCE SIRE %

## E COLEMAN CHARLO 0256

BULL **16879074** TATTOO **0256** DOB: **08/11/10**

**OCC Paxton 730P**  
14940735  
O C C Focus 813F  
O C C Blackbird 736K

**Bohi Abigale 6014**  
15353355  
Sitz Traveler 8180  
S A V Abigale 6062

Basin Rainmaker 654X  
Dixie Erica of CH 1019  
O C C Great Plains 943G  
O C C Blackbird 824G  
G D A R Traveler 71  
Sitz Everelda Entense 1137  
Bon View Emulation Ext 473  
Circle A Abigale 3008

CED	BEPD	WEPD	YEPD	SC	MILK	MARB	RE	\$M	\$W
9	0.0	50	91	1.44	25	.42	.48	57	73

- Charlo was the 2012 top-selling bull of the Coleman Spring Bull Sale and has captivated the entire world with his ability to sire low birth weight cattle with explosive muscle shape and performance in an easy-fleshing package.
- In the 2018 bull sale, Charlo sired the \$450,000 all-time, record-selling bull in the state of Montana, Coleman Bravo 6313.
- Charlo's dam, Bohi Abigale 6014, is a maternal matriarch who has served as a Coleman donor for many years. She has produced many top-selling sons and has been an extremely productive female that has maintained the maternal edge we are looking for.
- The 2022 Coleman Angus Bull Sale will offer 12 direct progeny of this legendary sire.



**COLEMAN CHARLO 0256**

**SIRE OF LOTS 63, 110, 113, 124, 127, 157, 158, 159, 160, 163, 166, AND 172.**

## F COLEMAN NAVIGATOR 614

BULL **18570027** TATTOO **614** DOB: **01/06/16**

**Cole Creek Black Cedar 46P**  
14496765  
C H Quantum 6247  
Cole Creek Clova Juanada 67

**Coleman Eriskay 291**  
17246470  
Coleman Juneau 044  
Sinclair Eriskay 2N1 7883

CH Quantum 3330  
CH Blackbird 0136  
A A R Windy Ridge 523  
Cole Creek Clova Juanada 811  
O C C Juneau 807J  
Coleman Donna 714  
D H D Traveler 6807  
Papa Eriskay 7883

CED	BEPD	WEPD	YEPD	SC	MILK	MARB	RE	\$M	\$W
4	0.8	64	103	.98	17	.17	.51	58	60

- Navigator is a multi-faceted sire who excels at the fundamental basics that make cattle good. He is a complete outcross bull with superior performance in a heavy-muscled package that has withstood the test of time and continues to impress both seedstock and commercial cattlemen.
- His dam, Coleman Eriskay 291, is an absolute favorite of visitors each and every year. She is from one of the great cow families in our industry with proven records in all major areas of production where she combined a progeny birth ratio of 89 with a progeny weaning ratio of 103 and 101, respectively, on five calves stemming from the \$23,000 foundation Eriskay Pathfinder dam, Eriskay 2N1 7883.
- Navigator is represented in the 2022 Coleman Angus Bull Sale by selling 8 sons and having the lead off yearling sire group.



**COLEMAN NAVIGATOR 614**

**SIRE OF LOTS 73, 105, 106, 107, 118, 119, 180, AND 184.**

## G COLEMAN ROCK 7200

BULL **19107936** TATTOO **7200** DOB: **07/12/17**

**OCC Juneau 807J**  
13627989  
O C C Emblazon 854E  
O C C Dixie Erica 903E

**Coleman Donna 714**  
15706882  
Connealy Onward  
Coleman Donna 386

D H D Traveler 6807  
Dixie Erica of CH 1019  
O C C Candor 763C  
O C C Dixie Erica 799B  
Connealy Lead On  
Altune of Conanga 6104  
Basin Rainmaker 654X  
KMK Donna J311

CED	BEPD	WEPD	YEPD	SC	MILK	MARB	RE	\$M	\$W
7	0.6	76	123	1.25	24	-.10	.67	87	83

- Rock lives up to his name as his offspring are three dimensional with loads of muscle, rib, and tremendous dense mass from front to rear. He has developed into a very impressive herdsire with explosive numbers across the board. He is a high \$M bull with calving ease and growth built in.
- His dam, Coleman Donna 714, is the all-time, high income-producing female in the program and his third-generation donor has established herself as one of the great producing herdsire dams of her era.
- The 2022 Coleman Angus Bull Sale will feature 8 direct sons that sell.



**COLEMAN ROCK 7200**

**SIRE OF LOTS 9, 53, 62, 65, 67, 149, 179, AND 183.**

## H COLEMAN TRIUMPH 9145

BULL **19555917** TATTOO **9145** DOB: **02/01/19**

**Coleman Bravo 6313**  
18734838  
Coleman Charlo 0256  
Coleman Donna 714

**Lawsons Chloe C815**  
18359250  
S A V Renown 3439  
Lawsons Chloe Z341

O C C Paxton 730P  
Bohi Abigale 6014  
Connealy Onward  
Coleman Donna 386  
Rito 707 of Ideal 3407 7075  
S A V Blackcap May 4136  
Sitz Upward 307R  
Basin Chloe 7T26

CED	BEPD	WEPD	YEPD	SC	MILK	MARB	RE	\$M	\$W
8	-0.5	63	122	.92	25	.32	.63	76	67

- Coleman Triumph 9145 is among one of the most popular sires in the industry. He was selected as the top-selling bull of the 2020 Coleman Angus Fall Production Sale at \$225,000 by Rust Mountain and has gained the attention of cattlemen across the Northern Hemisphere. He sires cattle with tremendous phenotype, added depth of body with exceptional width of base from front to rear. His offspring have a notch more scale and perform with the best of the genetics in our industry.
- His mother, Chloe C815, has established herself as one of the really good producing females in the Coleman herd. She produced, the last three years, the top-selling females in the fall production sales.
- 4 Sons will be the first of his offspring to sell in the 2022 Coleman Angus Bull Sale.



**COLEMAN TRIUMPH 9145**

**SIRE OF LOTS 108, 109, 135, AND 136.**

# % COLEMAN ANGUS



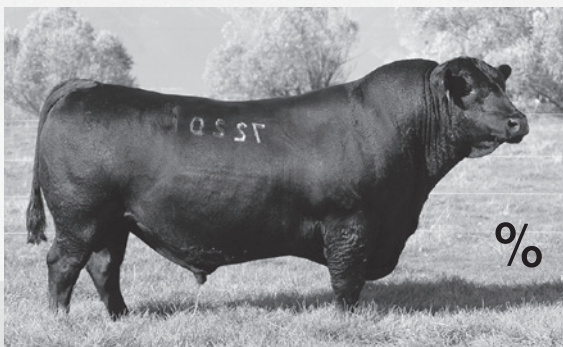
## COLEMAN MARSHALL 7170

SIRE OF LOTS 11, 68, 85, 131, 143, 146, 147, 151, 164, AND 182.



## SAV RESOURCE 1441

SIRE OF LOTS 5, 12, 18, 29, 30, 34, 40, AND 56.



## COLEMAN REBOUND 7220

SIRE OF LOTS 69, 81, 82, 99, 128, 174, 189, 192, 193, 194, 195, AND 197.



## ZWT SUMMITT 6507

SIRE OF LOTS 17, 42, 43, 51, 70, 72, 78, 79, 80, 91, AND 100.

## I COLEMAN MARSHALL 7170

BULL 19102287 TATTOO 7170 DOB: 06/29/17

**SAV Resource 1441**  
17016597  
S A V Blackcap May 4136  
Basin Rainmaker 654X

**Coleman Donna 197**  
17188528  
KMK Donna J311

R R Rito 707  
Ideal 3407 of 1418 076  
S A V 8180 Traveler 004  
S A V May 2397  
Basin Rainmaker D S 380U  
Basin Bardolene 423U  
D H D Traveler 6807  
Brooks Donna 319

CED	BE PD	WE PD	YE PD	SC	MILK	MARB	RE	\$M	\$W
11	0.7	61	119	.37	26	-.12	.95	83	66

- Marshall is a direct son of Resource and back to Coleman Donna 197, who is a full sister to the legendary Coleman Donna 386. Marshall is a curve bender and an elite calving-ease sire. His pedigree blends some of the all-time breed leaders for low-birth-weight genetics and performance.
- The 2022 Coleman Angus Bull Sale will offer 10 direct calving-ease sons.

## J SAV RESOURCE 1441

BULL 17016597 TATTOO 1441 DOB: 1/7/2011

**Rito 707 of Ideal 3407 7075**  
13066860  
Ideal 3407 of 1418 076  
S A V 8180 Traveler 004

**SAV Blackcap May 4136**  
14739095  
S A V May 2397

Rito N Bar  
Eriskay of Rollin Rock 3  
Ideal 1418 of 8103 4286  
Ideal 076 of 692 8375  
Sitz Traveler 8180  
Boyd Forever Lady 8003  
S A F 598 Bando 5175  
S A V May 7238

CED	BE PD	WE PD	YE PD	SC	MILK	MARB	RE	\$M	\$W
2	4.1	69	132	1.12	17	-.11	1.09	54	55

- A popular AI sire that sires cattle with power, proven performance, and represents the timeless genetics of the Rito 707 lineage. He stamps his offspring with the basics commercial cattlemen admire.
- His dam, SAV Blackcap May 4136, is a high income-producing female and is also the mother of SAV Renown, whose sons also sell in this event.
- Resource offers 8 direct sons in the 2022 Coleman Angus Bull Spring Sale.

## K COLEMAN REBOUND 7220

BULL 19102306 TATTOO 7220 DOB: 06/26/17

**SAV Renown 3439**  
17633839  
S A V Blackcap May 4136  
Connealy Onward

**Coleman Donna 714**  
15706882  
Coleman Donna 386

R R Rito 707  
Ideal 3407 of 1418 076  
S A V 8180 Traveler 004  
S A V May 2397  
Connealy Lead On  
Altune of Conanga 6104  
Basin Rainmaker 654X  
KMK Donna J311

CED	BE PD	WE PD	YE PD	SC	MILK	MARB	RE	\$M	\$W
2	2.1	66	120	.18	28	-.26	.72	88	70

- A maternal sensation and proven breeding bull. Rebound is an attractive herd sire with power, performance, and outstanding structure and feet quality. His offspring excel in these qualities as well.
- Coleman Donna 714, his dam, is the all-time, high-income producer in the Coleman program. Full brothers to this herd sire include Resolve and Summitt.
- The 2022 Coleman Angus Bull Sale will offer 12 direct progeny of this sire.

## L ZWT SUMMITT 6507

BULL 18561289 TATTOO 6507 DOB: 04/24/16

**SAV Renown 3439**  
17633839  
S A V Blackcap May 4136  
Connealy Onward

**Coleman Donna 714**  
15706882  
Coleman Donna 386

R R Rito 707  
Ideal 3407 of 1418 076  
S A V 8180 Traveler 004  
S A V May 2397  
Connealy Lead On  
Altune of Conanga 6104  
Basin Rainmaker 654X  
KMK Donna J311

CED	BE PD	WE PD	YE PD	SC	MILK	MARB	RE	\$M	\$W
10	0.6	63	113	.39	18	.15	.71	73	60

- Summitt was the top-selling bull of a past ZWT Fall Production sale and is a featured member of the ST Genetics AI stud. He is a highly respected and proven sire with excellent eye appeal, great structure, and attractive while producing very maternal females. He is a full brother to Resolve and Rebound.
- The 2022 Coleman Angus Spring Bull Sale will offer 11 direct sons.

# REFERENCE SIRE %

## M KG JUSTIFIED 3023

BULL 17707279 TATTOO 3023 DOB: 1/21/2013

**Connealy Judgment**  
17031468  
Connealy Consensus 7229  
Entrine of Conanga 9876

**KG Miss Magic 1443**  
17127788  
Sitz Wisdom 481T  
KG Miss Magic 3528

Connealy Consensus  
Blue Lilly of Conanga 16  
Rito 6EMA of 4L3 Emblazon  
Entrance of Conanga 206  
Connealy Onward  
Sitz Elluna Elite 94P  
KG Traveler 8180 8171  
KG Miss Magic 6560

CED	BEPD	WEPD	YEPD	SC	MILK	MARB	RE	\$M	\$W
11	-2.0	62	109	1.77	30	1.03	.29	100	90

- Justified has gained the admiration of cattlemen with his excellent body mass, muscle, and feet. As impressive as his sons are with ultra-low birth genetics, his daughters are broody, easy-keeping, and highly productive with beautiful udders.
- The 2022 Coleman Angus Bull Sale will highlight 7 direct calving-ease sons.



**KG JUSTIFIED 3023**  
SIRE OF LOTS 115, 116, 117, 134, 150, AND 178.

## N COLEMAN MAVERICK 5322

BULL 18402732 TATTOO 5322 DOB: 07/14/15

**Coleman Charlo 0256**  
16879074  
O C C Paxton 730P  
Bohi Abigale 6014

**Coleman Donna 3202**  
17783501  
Wulffs Ext 6106  
Coleman Donna 714

O C C Focus 813F  
O C C Blackbird 736K  
Sitz Traveler 8180  
S A V Abigale 6062  
N Bar Emulation EXT  
Wulffs Erica Dianna C116  
Connealy Onward  
Coleman Donna 386

CED	BEPD	WEPD	YEPD	SC	MILK	MARB	RE	\$M	\$W
17	-2.6	48	94	1.08	21	.40	.44	72	53

- Maverick is a sure shot heifer bull with double-digit, calving-ease and low birth weight genetics. He is also loaded with tremendous maternal genetics being a son of Charlo and back to a great donor in the program, Coleman Donna 3202. His sons are calving-ease bulls with added muscle and a great phenotype.
- The 2022 Coleman Angus Bull Sale will offer 4 direct progeny.



**COLEMAN MAVERICK 5322**  
SIRE OF LOTS 130, 170, 171, AND 196.

## O COLEMAN GAME CHANGER 7369

BULL 19102339 TATTOO 7369 DOB: 07/12/17

**Coleman Playmaker 427**  
17914039  
GDAR Game Day 449  
Coleman Donna 714

**Coleman Donna 5247**  
18402681  
Coleman Charlo 0256  
Coleman Donna 194

Boyd New Day 8005  
G D A R Miss Wix 474  
Connealy Onward  
Coleman Donna 386  
O C C Paxton 730P  
Bohi Abigale 6014  
Sitz Upward 307R  
Coleman Donna 386

CED	BEPD	WEPD	YEPD	SC	MILK	MARB	RE	\$M	\$W
11	0.0	67	125	.81	27	.14	.52	81	75

- Game Changer is a cowman's bull with a pedigree stacked with great mothers. He is a direct son of Playmaker, and his dam is a standout daughter of Charlo, Coleman Donna 5247. Game Changer has tremendous spread from birth to yearling without sacrificing a \$M value in the Top 10% of breed.
- The 2022 Coleman Angus Bull Sale will offer 3 sons of this breed improver.



**COLEMAN GAME CHANGER 7369**  
SIRE OF LOTS 45, 71, AND 74.

## P COLEMAN RESOURCE 710

BULL 18933682 TATTOO 710 DOB: 01/15/17

**S A V Resource 1441**  
17016597  
Rito 707 of Ideal 3407 7075  
S A V Blackcap May 4136

**Coleman Donna 4121**  
17911696  
O C C Juneau 807J  
Coleman Donna 005

R R Rito 707  
Ideal 3407 of 1418 076  
S A V 8180 Traveler 004  
S A V May 2397  
O C C Emblazon 854E  
O C C Dixie Erica 903E  
N Bar Shadow X4124  
Coleman Donna 386

CED	BEPD	WEPD	YEPD	SC	MILK	MARB	RE	\$M	\$W
0	4.2	69	128	1.16	22	.15	.76	52	54

- Coleman Resource 710 was the third top-selling bull in the 2018 Coleman Angus Spring Bull Sale and purchased by Little Goose Ranch. Resource 710 demonstrates stoutness, muscle, rib shape, and dimension. He reads with as good of a maternal pedigree as you will find with added performance.
- The 2022 Coleman Angus Spring Bull Sale will highlight 2 sons of this sire.



**COLEMAN RESOURCE 710**  
SIRE OF LOTS 121 AND 122.

# % COLEMAN ANGUS



COLEMAN **GLACIER** 041 – HE SELLS AS LOT 1.

COLEMAN **DONNA** 439 – DAM OF LOTS 1, 61, 75, 83, 152, 153, 157, 158, 159, 181, AND 186.

## 1 COLEMAN GLACIER 041

BULL **19866409** TATTOO **041** DOB: **01/11/20**

**SAV Renown 3439**  
17633839 SAV Blackcap May 4136

GDAR Game Day 449  
**Coleman Donna 439**  
17914042 Coleman Donna 714

R R Rito 707  
Ideal 3407 of 1418 076  
SAV 8180 Traveler 004  
SAV May 2397  
Boyd New Day 8005  
G D A R Miss Wix 474  
Connealy Onward  
Coleman Donna 386

BW		205 Wt		Dam's Nursing Ratio					
86	881	5	107						
CED	BW	WW	YW	SC	MILK	MARB	RE	\$M	\$W
2	2.6	74	131	.16	29	-.32	.82	84	78

% Actual weight as of December 31, 2021: N/A

- Coleman Glacier 041 offers an outstanding genetic and visual package to lead off this year's sale, representing everything we look for in an ideal breeding bull. His herd bull look and presence, along with his pedigree, is exactly what the industry is looking for. He has explosive growth ranking in the Top 15% of the breed for weaning and yearling while complimenting this with maternal genetics that rank him in the Top 5% of the breed for \$M.
- He blends the best of the Rito 707 lineage and stems from a very productive Pathfinder dam, Coleman Donna 439, who has powerful dimension and structure with an exquisite look in a very maternal package; she is a full sister to Coleman Playmaker 427, a featured member of the GENEX BEEF AI Stud. Donna 439 is a headliner donor in the program and is a herd sire producer who has 11 sons selling in this year's sale along with being the mother to Coleman Ace 989; she is following right in her mother's footsteps.
- Glacier's phenomenal grandam, Coleman Donna 714, is the all-time, high income-producing female in the program and has multiple sons to her credit, including Bravo, Rock, Resolve, Charlo 3212, and Summitt.



COLEMAN **ACE** 989 – MATERNAL BROTHER TO LOT 1



COLEMAN **PLAYMAKER** 427 – FULL BROTHER TO THE DAM OF LOT 1.



# PERFORMANCE TESTED BULL SALE %



COLEMAN **RENOWN** 0372 – HE SELLS AS LOT 2

## 2 COLEMAN **RENOWN** 0372

BULL **20178456** TATTOO **0372** DOB: **07/01/20**

Rito 707 of Ideal 3407 7075  
**SAV Renown 3439**  
 17633839 SAV Blackcap May 4136

Coleman Juneau 044  
**Coleman Donna 6206**  
 18734920 Coleman Donna 2252

RR Rito 707  
 Ideal 3407 of 1418 076  
 SAV 8180 Traveler 004  
 SAV May 2397  
 O C C Juneau 807J  
 Coleman Donna 714  
 Wulffs Ext 6106  
 Coleman Donna 989

BW		205 Wt			Dam's Nursing Ratio				
CED	BW	WW	YW	SC	MILK	MARB	RE	\$M	\$W
12	-1.2	63	109	.49	23	-.08	.42	83	68

% Actual weight as of December 31, 2021: 1695



COLEMAN **ABIGALE** 0277 – GRANDDAM OF LOT 3.

## 3 COLEMAN **RENOWN** 0378

BULL **20178460** TATTOO **0378** DOB: **06/25/20**

Rito 707 of Ideal 3407 7075  
**SAV Renown 3439**  
 17633839 SAV Blackcap May 4136

Coleman Juneau 044  
**Coleman Abigale 6290**  
 18734944 Coleman Abigale 0277

RR Rito 707  
 Ideal 3407 of 1418 076  
 SAV 8180 Traveler 004  
 SAV May 2397  
 O C C Juneau 807J  
 Coleman Donna 714  
 O C C Paxton 730P  
 Bohi Abigale 6014

BW		205 Wt			Dam's Nursing Ratio				
CED	BW	WW	YW	SC	MILK	MARB	RE	\$M	\$W
4	2.0	77	138	1.13	24	-.16	.85	46	73

% Actual weight as of December 31, 2021: 1690



COLEMAN **RENOWN** 0378 – HE SELLS AS LOT 3.

# % COLEMAN ANGUS



COLEMAN **RESOLVE** 0352 – HE SELLS AS LOT 4.

## 4 COLEMAN RESOLVE 0352

BULL 20178449 TATTOO 0352 DOB: 06/30/20

SAV Renown 3439  
**Coleman Resolve 7219**  
 19102305 Coleman Donna 714

Coleman Charlo 0256  
**Coleman Everelda Entense 432**  
 18105675 Coleman Everelda Entense2235

Rito 707 of Ideal 3407 7075  
 SAV Blackcap May 4136  
 Connealy Onward  
 Coleman Donna 386  
 O C C Paxton 730P  
 Bohi Abigale 6014  
 Coleman Regis 904  
 Coleman Everelda Entense 578

	BW		205 Wt		Dam's Nursing Ratio				
	82		781		5 - 116				
CED	BW	WW	YW	SC	MILK	MARB	RE	\$M	\$W
5	1.2	70	124	1.53	29	-.04	.90	67	79

% Actual weight as of December 31, 2021: 1710

## 5 COLEMAN RESOURCE 0392

BULL 20178465 TATTOO 0392 DOB: 07/01/20

Rito 707 of Ideal 3407 7075  
**SAV Resource 1441**  
 17016597 SAV Blackcap May 4136

Wulffs Ext 6106  
**Coleman Donna 7157**  
 19102641 Coleman Donna 040

R R Rito 707  
 Ideal 3407 of 1418 076  
 SAV 8180 Traveler 004  
 SAV May 2397  
 N Bar Emulation EXT  
 Wulffs Erica Dianna C116  
 O C C Juneau 807J  
 Coleman Donna 714

	BW		205 Wt		Dam's Nursing Ratio				
	92		801		2 - 116				
CED	BW	WW	YW	SC	MILK	MARB	RE	\$M	\$W
7	1.4	75	128	.89	27	.04	.77	94	83

% Actual weight as of December 31, 2021: 1705



COLEMAN **EVERELDA ENTENSE** 4327 – DAM OF LOT 4.



COLEMAN **RESOURCE** 0392 – HE SELLS AS LOT 5.

# YOUR MATERNAL SOURCE



COLEMAN **RENOWN** 0398 – HE SELLS AS LOT 6.

## 6 COLEMAN **RENOWN** 0398

BULL 20178468 TATTOO 0398 DOB: 07/01/20

Rito 707 of Ideal 3407 7075  
**SAV Renown 3439**  
 17633839 SAV Blackcap May 4136

Coleman Charlo 0256  
**Coleman Donna 7180**  
 19102648 Coleman Donna 197

RR Rito 707  
 Ideal 3407 of 1418 076  
 SAV 8180 Traveler 004  
 SAV May 2397  
 OCC Paxton 730P  
 Bohi Abigale 6014  
 Basin Rainmaker 654X  
 KMK Donna J311

BW		205 Wt				Dam's Nursing Ratio				
CED	BW	WW	YW	SC	MILK	MARB	RE	\$M	\$W	
2	92	2.4	80	141	1.48	23	-.29	.97	83	81

% Actual weight as of December 31, 2021: 1700



COLEMAN **DONNA** 197 – GRANDDAM OF LOT 6 AND 20.

## 7 COLEMAN **RENOWN** 0637

BULL 20178510 TATTOO 0637 DOB: 07/05/20

Rito 707 of Ideal 3407 7075  
**SAV Renown 3439**  
 17633839 SAV Blackcap May 4136

Coleman Cedar Ridge 4212  
**Coleman Blackcap 7524**  
 19102720 Coleman Blackcap 6112

RR Rito 707  
 Ideal 3407 of 1418 076  
 SAV 8180 Traveler 004  
 SAV May 2397  
 Cole Creek Cedar Ridge 1V  
 Coleman Donna 714  
 GAR Precision 1680  
 Coleman Blackcap 211

BW		205 Wt				Dam's Nursing Ratio				
CED	BW	WW	YW	SC	MILK	MARB	RE	\$M	\$W	
4	84	1.7	60	111	.88	25	-.17	.64	65	58

% Actual weight as of December 31, 2021: 1675



COLEMAN **DONNA** 7181 – FULL SISTER TO THE DAM OF LOTS 6 AND 20

# % COLEMAN ANGUS



COLEMAN **BRAVO** 0323 – HE SELLS AS LOT 8.

## 8 COLEMAN BRAVO 0323

BULL **20206539** TATTOO **0323** DOB: **06/26/20**  
 Coleman Charlo 0256  
**Coleman Bravo 6313**  
 18734838 Coleman Donna 714  
 S A V Renown 3439  
**Coleman Donna 7301**  
 19103417 Coleman Donna 3220

BW		205 Wt		Dam's Nursing Ratio					
CED	BW	WW	YW	SC	MILK	MARB	RE	\$M	\$W
8	1.1	63	111	1.13	20	.02	.65	79	64

% Actual weight as of December 31, 2021: 1655



COLEMAN **BRAVO** 0287 – HE SELLS AS LOT 10.

## 9 COLEMAN ROCK 0414

BULL **20178475** TATTOO **0414** DOB: **07/03/20**  
 O C C Juneau 807J  
**Coleman Rock 7200**  
 19107936 Coleman Donna 714  
 S A V Renown 3439  
**Coleman Everelda Entense7304**  
 19103418 Coleman Everelda Entense3318

BW		205 Wt		Dam's Nursing Ratio					
CED	BW	WW	YW	SC	MILK	MARB	RE	\$M	\$W
2	1.7	80	133	.06	23	-.23	.77	66	83

% Actual weight as of December 31, 2021: 1685



LAWSONS **CHLOE** C815 – MATERNAL SISTER TO LOT 10.

## 10 COLEMAN BRAVO 0287

BULL **20206537** TATTOO **0287** DOB: **07/05/20**  
 Coleman Charlo 0256  
**Coleman Bravo 6313**  
 18734838 Coleman Donna 714  
 Sitz Upward 307R  
**Lawsons Chloe Z341**  
 17319939 Basin Chloe 7T26

BW		205 Wt		Dam's Nursing Ratio					
CED	BW	WW	YW	SC	MILK	MARB	RE	\$M	\$W
11	0.2	63	114	.11	35	-.10	.56	84	83

% Actual weight as of December 31, 2021: 1625



COLEMAN **MARSHALL** 0247 – HE SELLS AS LOT 11.

## 11 COLEMAN MARSHALL 0427

BULL **20178479** TATTOO **0427** DOB: **06/27/20**  
 S A V Resource 1441  
**Coleman Marshall 7170**  
 19102287 Coleman Donna 197  
 Coleman Maverick 5322  
**Coleman Everelda Entense7368**  
 18883994 Coleman Everelda Entense5246

BW		205 Wt		Dam's Nursing Ratio					
CED	BW	WW	YW	SC	MILK	MARB	RE	\$M	\$W
10	-0.9	58	112	.90	36	-.28	.82	77	76

% Actual weight as of December 31, 2021: 1705

# PERFORMANCE TESTED BULL SALE %

## 12 COLEMAN RESOURCE 0636

BULL 20209391 TATTOO 0636 DOB: 07/11/20

Rito 707 of Ideal 3407 7075  
**SAV Resource 1441**  
 17016597 SAV Blackcap May 4136

Coleman Cedar Ridge 4212  
**Coleman Polly 7516**  
 19102712 Coleman Polly 2434

R R Rito 707  
 Ideal 3407 of 1418 076  
 SAV 8180 Traveler 004  
 SAV May 2397  
 Cole Creek Cedar Ridge 1V  
 Coleman Donna 714  
 Coleman Missing Link 9246  
 Coleman Polly 9251

BW		205 Wt				Dam's Nursing Ratio				
82		769				2 - 105				
CED	BW	WW	YW	SC	MILK	MARB	RE	\$M	\$W	
6	1.8	72	130	1.61	21	.07	.75	61	65	

% Actual weight as of December 31, 2021: 1690



COLEMAN RESOURCE 0636 – HE SELLS AS LOT 12.

## 13 COLEMAN RENOWN 0412

BULL 20178473 TATTOO 0412 DOB: 06/29/20

Rito 707 of Ideal 3407 7075  
**SAV Renown 3439**  
 17633839 SAV Blackcap May 4136

NCC Prestige 317 736K  
**Coleman Donna 7298**  
 19102675 Coleman Donna 3215

R R Rito 707  
 Ideal 3407 of 1418 076  
 SAV 8180 Traveler 004  
 SAV May 2397  
 O C C Prestige 672P  
 O C C Blackbird 736K  
 Leachman Right Time  
 Coleman Donna 714

BW		205 Wt				Dam's Nursing Ratio				
88		791				2 - 115				
CED	BW	WW	YW	SC	MILK	MARB	RE	\$M	\$W	
-1	3.3	65	116	.98	21	.04	.74	51	56	

% Actual weight as of December 31, 2021: 1675



COLEMAN RENOWN 0412 – HE SELLS AS LOT 13.

## 14 COLEMAN BRAVO 0252

BULL 20178429 TATTOO 0252 DOB: 07/09/20

Coleman Charlo 0256  
**Coleman Bravo 6313**  
 18734838 Coleman Donna 714

O C C Juneau 807J  
**Coleman Donna 0308**  
 17089286 Coleman Donna 732

O C C Paxton 730P  
 Bohi Abigale 6014  
 Connealy Onward  
 Coleman Donna 386  
 O C C Emblazon 854E  
 O C C Dixie Erica 903E  
 Connealy Onward  
 Coleman Donna 386

BW		205 Wt				Dam's Nursing Ratio				
84		726				6 - 105				
CED	BW	WW	YW	SC	MILK	MARB	RE	\$M	\$W	
10	0.5	56	94	1.53	25	.20	.46	97	68	

% Actual weight as of December 31, 2021: 1595



COLEMAN BRAVO 0252 – HE SELLS AS LOT 14.

## 15 COLEMAN RENOWN 0363

BULL 20178453 TATTOO 0363 DOB: 06/25/20

Rito 707 of Ideal 3407 7075  
**SAV Renown 3439**  
 17633839 SAV Blackcap May 4136

GDAR Game Day 449  
**Coleman Donna 5318**  
 18403189 Coleman Donna 714

R R Rito 707  
 Ideal 3407 of 1418 076  
 SAV 8180 Traveler 004  
 SAV May 2397  
 Boyd New Day 8005  
 G D A R Miss Wix 474  
 Connealy Onward  
 Coleman Donna 386

BW		205 Wt				Dam's Nursing Ratio				
70		764				4 - 109				
CED	BW	WW	YW	SC	MILK	MARB	RE	\$M	\$W	
10	0.5	71	122	1.06	28	.28	.64	75	82	

% Actual weight as of December 31, 2021: 1685



COLEMAN RENOWN 0363 – HE SELLS AS LOT 15 AND IS A FULL BROTHER-IN-BLOOD TO LOT 1.

# % COLEMAN ANGUS



COLEMAN **RENOWN** 0367 – HE SELLS AS LOT 16.



COLEMAN **SUMMITT** 0635 – HE SELLS AS LOT 17.

Have you ever stopped to think how much more time you spend with the poor cattle, than the good ones? The good ones not only take care of themselves, they make the ranch profitable.



COLEMAN **RENOWN** 0421 – HE SELLS AS LOT 19.

## 16 COLEMAN RENOWN 0367

BULL **20178454** TATTOO **0367** DOB: **06/27/20**

Rito 707 of Ideal 3407 7075  
**SAV Renown 3439**  
 17633839 SAV Blackcap May 4136  
 O C C Great Plains 943G  
**Coleman Donna 5404**  
 18410201 Coleman Donna 714

R R Rito 707  
 Ideal 3407 of 1418 076  
 SAV 8180 Traveler 004  
 SAV May 2397  
 N Bar Emulation EXT  
 Dixie Erica of CH 1019  
 Connealy Onward  
 Coleman Donna 386

BW		205 Wt		Dam's Nursing Ratio					
86	694	4 - 106							
CED	BW	WW	YW	SC	MILK	MARB	RE	\$M	\$W
9	0.9	66	121	.09	23	.01	.58	56	65

% Actual weight as of December 31, 2021: 1685

## 17 COLEMAN SUMMITT 0496

BULL **20178500** TATTOO **0496** DOB: **07/10/20**

SAV Renown 3439  
**ZWT Summitt 6507**  
 18561289 Coleman Donna 714  
 Coleman Bravo 6313  
**Coleman Donna 8392**  
 19400649 Coleman Donna 5222

Rito 707 of Ideal 3407 7075  
 SAV Blackcap May 4136  
 Connealy Onward  
 Coleman Donna 386  
 Coleman Charlo 0256  
 Coleman Donna 714  
 Connealy Onward  
 Coleman Donna 197

BW		205 Wt		Dam's Nursing Ratio					
75	735	1 - 108							
CED	BW	WW	YW	SC	MILK	MARB	RE	\$M	\$W
7	1.8	73	131	.64	25	.13	.73	89	76

% Actual weight as of December 31, 2021: 1665

## 18 COLEMAN RESOURCE 0635

BULL **20209408** TATTOO **0635** DOB: **07/06/20**

Rito 707 of Ideal 3407 7075  
**SAV Resource 1441**  
 17016597 SAV Blackcap May 4136  
 Coleman Charlo 0256  
**JVC Lass 629**  
 18417238 JVC Lass 483

R R Rito 707  
 Ideal 3407 of 1418 076  
 SAV 8180 Traveler 004  
 SAV May 2397  
 O C C Paxton 730P  
 Bohi Abigale 6014  
 Coleman Lineman 229  
 C C A Lass 879

BW		205 Wt		Dam's Nursing Ratio					
94	805	3 - 109							
CED	BW	WW	YW	SC	MILK	MARB	RE	\$M	\$W
4	2.9	69	123	1.41	22			61	58

% Actual weight as of December 31, 2021: 1665

## 19 COLEMAN RENOWN 0421

BULL **20184102** TATTOO **0421** DOB: **07/24/20**

Rito 707 of Ideal 3407 7075  
**SAV Renown 3439**  
 17633839 SAV Blackcap May 4136  
 Coleman Charlo 0256  
**Coleman Donna 7358**  
 19102687 Coleman Donna 5214

R R Rito 707  
 Ideal 3407 of 1418 076  
 SAV 8180 Traveler 004  
 SAV May 2397  
 O C C Paxton 730P  
 Bohi Abigale 6014  
 Connealy Onward  
 Coleman Donna 197

BW		205 Wt		Dam's Nursing Ratio					
85	748	2 - 106							
CED	BW	WW	YW	SC	MILK	MARB	RE	\$M	\$W
-2	4.1	79	140	.74	34	.14	.82	81	86

% Actual weight as of December 31, 2021: 1690

# YOUR MATERNAL SOURCE



COLEMAN **RENOWN** 0397 – HE SELLS AS LOT 20.

COLEMAN **DONNA** 7181 – A FULL SISTER TO THE DAM OF LOTS LOTS 6 AND 20

## 20 COLEMAN RENOWN 0397

BULL 20178467 TATTOO 0397 DOB: 07/03/20

Rito 707 of Ideal 3407 7075  
**SAV Renown 3439**  
 17633839 SAV Blackcap May 4136

Coleman Charlo 0256  
**Coleman Donna 7174**  
 19102645 Coleman Donna 197

RR Rito 707  
 Ideal 3407 of 1418 076  
 SAV 8180 Traveler 004  
 SAV May 2397  
 OCC Paxton 730P  
 Bohi Abigale 6014  
 Basin Rainmaker 654X  
 KMK Donna J311

BW		205 Wt			Dam's Nursing Ratio				
83		731			2 - 106				
CED	BW	WW	YW	SC	MILK	MARB	RE	\$M	\$W
0	2.7	69	123	-.13	19	-.21	.64	64	62

% Actual weight as of December 31, 2021: 1625

## 21 COLEMAN RENOWN 0401

BULL 20178469 TATTOO 0401 DOB: 06/30/20

Rito 707 of Ideal 3407 7075  
**SAV Renown 3439**  
 17633839 SAV Blackcap May 4136

OCC Juneau 807J  
**Coleman Donna 7198**  
 19107938 Coleman Donna 714

RR Rito 707  
 Ideal 3407 of 1418 076  
 SAV 8180 Traveler 004  
 SAV May 2397  
 OCC Emblazon 854E  
 OCC Dixie Erica 903E  
 Connealy Onward  
 Coleman Donna 386

BW		205 Wt			Dam's Nursing Ratio				
84		772			2 - 110				
CED	BW	WW	YW	SC	MILK	MARB	RE	\$M	\$W
6	0.6	73	121	.24	23	-.26	.97	79	79

% Actual weight as of December 31, 2021: 1605



COLEMAN **RENOWN** 0401 – HE SELLS AS LOT 21.



COLEMAN **DONNA** 040 – A FULL SISTER TO THE DAM OF LOTS 21.

# % COLEMAN ANGUS



COLEMAN BRAVO 0395 – HE SELLS AS LOT 22.

## 22 COLEMAN BRAVO 0395

BULL 20178466 TATTOO 0395 DOB: 07/01/20

Coleman Charlo 0256  
**Coleman Bravo 6313**  
 18734838 Coleman Donna 714

Cole Creek Black Cedar 46P  
**Coleman Donna 7166**  
 19105451 Coleman Donna 197

O C C Paxton 730P  
 Bohi Abigale 6014  
 Connealy Onward  
 Coleman Donna 386  
 C H Quantum 6247  
 Cole Creek Clova Juanada 67  
 Basin Rainmaker 654X  
 KMK Donna J311

BW		205 Wt			Dam's Nursing Ratio				
78		717			2 - 105				
CED	BW	WW	YW	SC	MILK	MARB	RE	\$M	\$W
12	-0.8	64	117	.79	25	.14	.56	86	72

% Actual weight as of December 31, 2021: 1615

## 23 COLEMAN BRAVO 0495

BULL 20178499 TATTOO 0495 DOB: 07/08/20

Coleman Charlo 0256  
**Coleman Bravo 6313**  
 18734838 Coleman Donna 714

S A V Sensation 5615  
**Coleman Everelda Entense8383**  
 19402545 Coleman Everelda Entense4369

O C C Paxton 730P  
 Bohi Abigale 6014  
 Connealy Onward  
 Coleman Donna 386  
 S A V Registry 2831  
 S A V Blackcap May 4136  
 Coleman Charlo 0256  
 Coleman Everelda Entense2323

BW		205 Wt			Dam's Nursing Ratio				
80		762			1 - 112				
CED	BW	WW	YW	SC	MILK	MARB	RE	\$M	\$W
10	0.1	64	117	1.14	25			71	63

% Actual weight as of December 31, 2021: 1615



COLEMAN EVERELDA ENTENSE 8383 – DAM OF LOT 23.



COLEMAN BRAVO 0495 – HE SELLS AS LOT 23.



# PERFORMANCE TESTED BULL SALE %



COLEMAN **BRAVO** 0289 – HE SELLS AS LOT 24.

COLEMAN **ERISKAY** 287 – DAM OF LOTS 24 AND 32.

## 24 COLEMAN BRAVO 0289

BULL 20206538 TATTOO 0289 DOB: 06/24/20

Coleman Charlo 0256  
**Coleman Bravo 6313**  
 18734838 Coleman Donna 714

Coleman Juneau 044  
**Coleman Eriskay 287**  
 17246468 Sinclair Eriskay 2N1 7883

O C C Paxton 730P  
 Bohi Abigale 6014  
 Connealy Onward  
 Coleman Donna 386  
 O C C Juneau 807J  
 Coleman Donna 714  
 D H D Traveler 6807  
 Papa Eriskay 7883

BW		205 Wt			Dam's Nursing Ratio				
CED	BW	WW	YW	SC	MILK	MARB	RE	\$M	\$W
11	0.7	56	103	.69	25	-.01	.44	67	61

% Actual weight as of December 31, 2021: 1615

## 25 COLEMAN BRAVO 0277

BULL 20206536 TATTOO 0277 DOB: 06/30/20

Coleman Charlo 0256  
**Coleman Bravo 6313**  
 18734838 Coleman Donna 714

S A V Renown 3439  
**Coleman Donna 7301**  
 19103417 Coleman Donna 3220

O C C Paxton 730P  
 Bohi Abigale 6014  
 Connealy Onward  
 Coleman Donna 386  
 Rito 707 of Ideal 3407 7075  
 S A V Blackcap May 4136  
 N Bar Shadow X4124  
 Coleman Donna 714

BW		205 Wt			Dam's Nursing Ratio				
CED	BW	WW	YW	SC	MILK	MARB	RE	\$M	\$W
8	1.1	63	111	.69	20	.02	.65	79	64

% Actual weight as of December 31, 2021: 1675



COLEMAN **DONNA** 7301 – DAM OF LOT 25.



COLEMAN **BRAVO** 0277 – HE SELLS AS LOT 25.

# % COLEMAN ANGUS



COLEMAN **DONNA** 5207 – DAM OF LOTS 28, 38, 98, AND 182.



COLEMAN **RENOWN** 0374 – HE SELLS AS LOT 27.



COLEMAN **PRESIDENT** 0275 – HE SELLS AS LOT 28.



## SALE DAY PHONES:

(406) 728-3052 • (406) 240-2751

(406) 363-8818 • (406) 833-0117

## 26 COLEMAN RENOWN 0388

BULL 20178464 TATTOO 0388 DOB: 06/27/20

Rito 707 of Ideal 3407 7075  
**SAV Renown 3439**  
 17633839 SAV Blackcap May 4136  
 Coleman Charlo 3211  
**Coleman Anita 6454**  
 18734987 Pine Coulee Anita W93

R R Rito 707  
 Ideal 3407 of 1418 076  
 SAV 8180 Traveler 004  
 SAV May 2397  
 Coleman Charlo 0256  
 Coleman Donna 714  
 N Bar Emulation EXT  
 B C C Ambush Anita 41-101

BW		205 Wt		Dam's Nursing Ratio					
CED	BW	WW	YW	SC	MILK	MARB	RE	\$M	\$W
7	-0.5	71	125	.40	21	-.02	.62	61	73

% Actual weight as of December 31, 2021: 1655

## 27 COLEMAN RENOWN 0374

BULL 20178457 TATTOO 0374 DOB: 06/29/20

Rito 707 of Ideal 3407 7075  
**SAV Renown 3439**  
 17633839 SAV Blackcap May 4136  
 Coleman Charlo 0256  
**Coleman Donna 6248**  
 18734936 Coleman Donna 3121

R R Rito 707  
 Ideal 3407 of 1418 076  
 SAV 8180 Traveler 004  
 SAV May 2397  
 O C C Paxton 730P  
 Bohi Abigale 6014  
 Sitz Traveler 8180  
 Coleman Donna 714

BW		205 Wt		Dam's Nursing Ratio					
CED	BW	WW	YW	SC	MILK	MARB	RE	\$M	\$W
9	-1.7	58	101	.43	26	.07	.37	75	69

% Actual weight as of December 31, 2021: 1585

## 28 COLEMAN PRESIDENT 0275

BULL 20211106 TATTOO 0275 DOB: 07/03/20

Coleman Charlo 0256  
**SAV President 6847**  
 18578964 SAV Blackcap May 4136  
 O C C Great Plains 943G  
**Coleman Donna 5207**  
 18410196 Coleman Donna 714

O C C Paxton 730P  
 Bohi Abigale 6014  
 SAV 8180 Traveler 004  
 SAV May 2397  
 N Bar Emulation EXT  
 Dixie Erica of CH 1019  
 Connealy Onward  
 Coleman Donna 386

BW		205 Wt		Dam's Nursing Ratio					
CED	BW	WW	YW	SC	MILK	MARB	RE	\$M	\$W
9	0.9	60	100	.68	27	-.08	.74	81	71

% Actual weight as of December 31, 2021: 1625

## 29 COLEMAN RESOURCE 0633

BULL 20209396 TATTOO 0633 DOB: 07/23/20

Rito 707 of Ideal 3407 7075  
**SAV Resource 1441**  
 17016597 SAV Blackcap May 4136  
 Coleman Juneau 3345  
**Coleman Rita 6501**  
 18734992 Coleman Rita 4481

R R Rito 707  
 Ideal 3407 of 1418 076  
 SAV 8180 Traveler 004  
 SAV May 2397  
 Coleman Juneau 044  
 Coleman Donna 801  
 Coleman Charlo 0256  
 Coleman Rita 8219

BW		205 Wt		Dam's Nursing Ratio					
CED	BW	WW	YW	SC	MILK	MARB	RE	\$M	\$W
2	3.2	68	121	1.45	25	.05	.87	65	62

% Actual weight as of December 31, 2021: 1585

# YOUR MATERNAL SOURCE

## 30 COLEMAN RESOURCE 0329

BULL 20178447 TATTOO 0329 DOB: 07/04/20

Rito 707 of Ideal 3407 7075  
**SAV Resource 1441**  
 17016597 SAV Blackcap May 4136

O C C Juneau 807J  
**Coleman Donna 040**  
 16584279 Coleman Donna 714

R R Rito 707  
 Ideal 3407 of 1418 076  
 SAV 8180 Traveler 004  
 SAV May 2397  
 O C C Emblazon 854E  
 O C C Dixie Erica 903E  
 Connealy Onward  
 Coleman Donna 386

BW		205 Wt				Dam's Nursing Ratio			
91		756				7 - 107			
CED	BW	WW	YW	SC	MILK	MARB	RE	\$M	\$W
6	0.4	57	98	.79	28	-.22	.99	90	68

% Actual weight as of December 31, 2021: 1605



COLEMAN RESOURCE 0329 - HE SELLS AS LOT 30.

## 31 COLEMAN BRAVO 0262

BULL 20178435 TATTOO 0262 DOB: 07/07/20

Coleman Charlo 0256  
**Coleman Bravo 6313**  
 18734838 Coleman Donna 714

O C C Juneau 807J  
**Coleman Donna 0298**  
 16880258 Coleman Donna 732

O C C Paxton 730P  
 Bohi Abigale 6014  
 Connealy Onward  
 Coleman Donna 386  
 O C C Emblazon 854E  
 O C C Dixie Erica 903E  
 Connealy Onward  
 Coleman Donna 386

BW		205 Wt				Dam's Nursing Ratio			
84		720				7 - 107			
CED	BW	WW	YW	SC	MILK	MARB	RE	\$M	\$W
9	0.7	57	100	.31	28	-.01	.41	87	70

% Actual weight as of December 31, 2021: 1535



COLEMAN BRAVO 0262 - HE SELLS AS LOT 31.

## 32 COLEMAN BRAVO 0272

BULL 20206535 TATTOO 0272 DOB: 06/28/20

Coleman Charlo 0256  
**Coleman Bravo 6313**  
 18734838 Coleman Donna 714

Coleman Juneau 044  
**Coleman Eriskay 287**  
 17246468 Sinclair Eriskay 2N1 7883

O C C Paxton 730P  
 Bohi Abigale 6014  
 Connealy Onward  
 Coleman Donna 386  
 O C C Juneau 807J  
 Coleman Donna 714  
 D H D Traveler 6807  
 Papa Eriskay 7883

BW		205 Wt				Dam's Nursing Ratio			
85		720				6 - 107			
CED	BW	WW	YW	SC	MILK	MARB	RE	\$M	\$W
11	0.7	56	103	1.01	25	-.01	.44	67	61

% Actual weight as of December 31, 2021: 1605



COLEMAN BRAVO 0272 - HE SELLS AS LOT 32.

## 33 COLEMAN RENOWN 0360

BULL 20178452 TATTOO 0360 DOB: 06/27/20

Rito 707 of Ideal 3407 7075  
**SAV Renown 3439**  
 17633839 SAV Blackcap May 4136

Coleman Knight 209  
**Coleman Everelda Entense5246**  
 18402680 Coleman Everelda Entense0132

R R Rito 707  
 Ideal 3407 of 1418 076  
 SAV 8180 Traveler 004  
 SAV May 2397  
 R R Rito 707  
 Coleman Donna 714  
 Wulffs Ext 6106  
 Coleman Everelda Entense8165

BW		205 Wt				Dam's Nursing Ratio			
76		748				4 - 108			
CED	BW	WW	YW	SC	MILK	MARB	RE	\$M	\$W
8	-1.2	49	90	.61	27	-.21	.56	66	57

% Actual weight as of December 31, 2021: 1605



COLEMAN RENOWN 0360 - HE SELLS AS LOT 33.

# % COLEMAN ANGUS



COLEMAN **DONNA** 040 – DAM OF LOTS 30, 34, 89, AND 93.



COLEMAN **BRAVO** 0631 – HE SELLS AS LOT 37.

## 34 COLEMAN RESOURCE 0260

BULL 20178433 TATTOO 0260 DOB: 07/04/20

Rito 707 of Ideal 3407 7075  
**SAV Resource 1441**  
 17016597 SAV Blackcap May 4136

OCC Juneau 807J  
**Coleman Donna 040**  
 16584279 Coleman Donna 714

R R Rito 707  
 Ideal 3407 of 1418 076  
 SAV 8180 Traveler 004  
 SAV May 2397  
 OCC Emblazon 854E  
 OCC Dixie Erica 903E  
 Connealy Onward  
 Coleman Donna 386

BW		205 Wt			Dam's Nursing Ratio				
85		737			7 - 107				
CED	BW	WW	YW	SC	MILK	MARB	RE	\$M	\$W
7	0.3	61	103	.63	29	.16	.90	70	74

% Actual weight as of December 31, 2021: 1595

## 36 COLEMAN BRAVO 0489

BULL 20178496 TATTOO 0489 DOB: 07/02/20

Coleman Charlo 0256  
**Coleman Bravo 6313**  
 18734838 Coleman Donna 714

Soo Line Motive 9016  
**Coleman Donna 8360**  
 19403164 Coleman Donna 3205

OCC Paxton 730P  
 Bohi Abigale 6014  
 Connealy Onward  
 Coleman Donna 386  
 HF Kodiak 5R  
 TLA Beauty 5R  
 Sitz Traveler 8180  
 Coleman Donna 714

BW		205 Wt			Dam's Nursing Ratio				
84		715			1 - 105				
CED	BW	WW	YW	SC	MILK	MARB	RE	\$M	\$W
10	0.8	59	109	.38	24			74	56

% Actual weight as of December 31, 2021: 1625

## 35 COLEMAN RENOWN 0359

BULL 20178451 TATTOO 0359 DOB: 07/01/20

Rito 707 of Ideal 3407 7075  
**SAV Renown 3439**  
 17633839 SAV Blackcap May 4136

Coleman Juneau 0290  
**Coleman Dixie Erica 5233**  
 18402673 Coleman Dixie Erica 1501

R R Rito 707  
 Ideal 3407 of 1418 076  
 SAV 8180 Traveler 004  
 SAV May 2397  
 OCC Juneau 807J  
 Coleman Donna 732  
 Akers United 8858  
 Akers Dixie Erica 8149

BW		205 Wt			Dam's Nursing Ratio				
88		738			4 - 105				
CED	BW	WW	YW	SC	MILK	MARB	RE	\$M	\$W
-1	1.5	62	106	.09	21	.22	.42	72	62

% Actual weight as of December 31, 2021: 1595

## 37 COLEMAN BRAVO 0631

BULL 20178509 TATTOO 0631 DOB: 07/09/20

Coleman Charlo 0256  
**Coleman Bravo 6313**  
 18734838 Coleman Donna 714

Coleman Missing Link 017  
**Coleman Blackbird 5520**  
 18402863 Coleman Blackbird 2425

OCC Paxton 730P  
 Bohi Abigale 6014  
 Connealy Onward  
 Coleman Donna 386  
 OCC Missing Link 830M  
 Coleman Everelda Entense 840  
 Coleman Regis 904  
 Coleman Blackbird 8206

BW		205 Wt			Dam's Nursing Ratio				
95		743			4 - 105				
CED	BW	WW	YW	SC	MILK	MARB	RE	\$M	\$W
9	1.9	60	111	1.20	26	.20	.36	63	60

% Actual weight as of December 31, 2021: 1585



COLEMAN **RENOWN** 0359 – HE SELLS AS LOT 35.

## 38 COLEMAN PRESIDENT 0273

BULL 20211101 TATTOO 0273 DOB: 06/30/20

Coleman Charlo 0256  
**SAV President 6847**  
 18578964 SAV Blackcap May 4136

OCC Great Plains 943G  
**Coleman Donna 5207**  
 18410196 Coleman Donna 714

OCC Paxton 730P  
 Bohi Abigale 6014  
 SAV 8180 Traveler 004  
 SAV May 2397  
 N Bar Emulation EXT  
 Dixie Erica of CH 1019  
 Connealy Onward  
 Coleman Donna 386

BW		205 Wt			Dam's Nursing Ratio				
94		605			4 - 109				
CED	BW	WW	YW	SC	MILK	MARB	RE	\$M	\$W
9	0.9	60	100	.20	27	-.08	.74	81	71

% Actual weight as of December 31, 2021: 1585

# PERFORMANCE TESTED BULL SALE %

## 39 COLEMAN RENOWN 0385

BULL 20178463 TATTOO 0385 DOB: 06/29/20

Rito 707 of Ideal 3407 7075  
**SAV Renown 3439**  
 17633839 SAV Blackcap May 4136

Coleman Juneau 044  
**Coleman Abigale 6334**  
 18734960 Coleman Abigale 0277

R R Rito 707  
 Ideal 3407 of 1418 076  
 SAV 8180 Traveler 004  
 SAV May 2397  
 O C C Juneau 807J  
 Coleman Donna 714  
 O C C Paxton 730P  
 Bohi Abigale 6014

BW		205 Wt				Dam's Nursing Ratio				
83		769				3 - 108				
CED	BW	WW	YW	SC	MILK	MARB	RE	\$M	\$W	
7	0.4	67	112	.63	23	-.02	.66	67	69	

% Actual weight as of December 31, 2021: 1605



COLEMAN RENOWN 0385 - HE SELLS AS LOT 39.

## 40 COLEMAN RESOURCE 0630

BULL 20209411 TATTOO 0630 DOB: 07/11/20

Rito 707 of Ideal 3407 7075  
**SAV Resource 1441**  
 17016597 SAV Blackcap May 4136

Coleman Charlo 0256  
**Coleman Bonny 5511**  
 18402855 Coleman Bonny 1302

R R Rito 707  
 Ideal 3407 of 1418 076  
 SAV 8180 Traveler 004  
 SAV May 2397  
 O C C Paxton 730P  
 Bohi Abigale 6014  
 Coleman Regis 904  
 Coleman Bonny 9236

BW		205 Wt				Dam's Nursing Ratio				
86		793				4 - 105				
CED	BW	WW	YW	SC	MILK	MARB	RE	\$M	\$W	
8	1.2	76	135	.59	21	-.05	.94	70	71	

% Actual weight as of December 31, 2021: 1535

## 43 COLEMAN SUMMITT 0484

BULL 20178493 TATTOO 0484 DOB: 07/07/20

SAV Renown 3439  
**ZWT Summitt 6507**  
 18561289 Coleman Donna 714

Coleman Navigator 614  
**Coleman Donna 8338**  
 19400633 Coleman Donna 514

Rito 707 of Ideal 3407 7075  
 SAV Blackcap May 4136  
 Connealy Onward  
 Coleman Donna 386  
 Cole Creek Black Cedar 46P  
 Coleman Eriskay 291  
 Coleman Charlo 0256  
 Coleman Donna 066

BW		205 Wt				Dam's Nursing Ratio				
75		674				1 - 99				
CED	BW	WW	YW	SC	MILK	MARB	RE	\$M	\$W	
9	0.4	63	109	.46	20			69	58	

% Actual weight as of December 31, 2021: 1575

## 41 COLEMAN PLAYMAKER 0642

BULL 20178514 TATTOO 0642 DOB: 08/02/20

GDAR Game Day 449  
**Coleman Playmaker 427**  
 17914039 Coleman Donna 714

Coleman Missing Link 9246  
**Coleman Polly 2431**  
 17544792 Coleman Polly 9258

Boyd New Day 8005  
 G D A R Miss Wix 474  
 Connealy Onward  
 Coleman Donna 386  
 O C C Missing Link 830M  
 Bohi Pure Pride 6096  
 D H D Traveler 6807  
 M H Polly 850

BW		205 Wt				Dam's Nursing Ratio				
78		748				7 - 107				
CED	BW	WW	YW	SC	MILK	MARB	RE	\$M	\$W	
9	-1.1	56	96	1.20	30	-.08	.46	58	67	

% Actual weight as of December 31, 2021: 1665

## 44 COLEMAN BRAVO 0304

BULL 20178443 TATTOO 0304 DOB: 07/07/20

Coleman Charlo 0256  
**Coleman Bravo 6313**  
 18734838 Coleman Donna 714

Coleman Juneau 044  
**Coleman Eriskay 291**  
 17246470 Sinclair Eriskay 2N1 7883

O C C Paxton 730P  
 Bohi Abigale 6014  
 Connealy Onward  
 Coleman Donna 386  
 O C C Juneau 807J  
 Coleman Donna 714  
 D H D Traveler 6807  
 Papa Eriskay 7883

BW		205 Wt				Dam's Nursing Ratio				
80		716				7 - 104				
CED	BW	WW	YW	SC	MILK	MARB	RE	\$M	\$W	
17	-1.5	49	90	.66	25	.13	.43	78	59	

% Actual weight as of December 31, 2021: 1545

## 42 COLEMAN SUMMITT 0470

BULL 20178488 TATTOO 0470 DOB: 07/03/20

SAV Renown 3439  
**ZWT Summitt 6507**  
 18561289 Coleman Donna 714

Coleman Bravo 6313  
**Coleman Donna 8284**  
 19400616 Coleman Donna 6143

Rito 707 of Ideal 3407 7075  
 SAV Blackcap May 4136  
 Connealy Onward  
 Coleman Donna 386  
 Coleman Charlo 0256  
 Coleman Donna 714  
 Wulffs Ext 6106  
 KMK Donna J311

BW		205 Wt				Dam's Nursing Ratio				
73		737				1 - 108				
CED	BW	WW	YW	SC	MILK	MARB	RE	\$M	\$W	
12	0.4	66	112	1.04	24	-.22	.58	88	69	

% Actual weight as of December 31, 2021: 1575



COLEMAN BRAVO 0304 - HE SELLS AS LOT 44.

# % COLEMAN ANGUS



COLEMAN **GAME CHANGER** 0473 – HE SELLS AS LOT 45.

## 45 **COLEMAN GAME CHANGER 0473**

BULL **20178489** TATTOO **0473** DOB: **07/27/20**

Coleman Playmaker 427  
**Coleman Game Changer 7369**  
 19102339 Coleman Donna 5247

S A V President 6847  
**Coleman Beauty 8293**  
 19400619 TLA Beauty 5R

GDAR Game Day 449  
 Coleman Donna 714  
 Coleman Charlo 0256  
 Coleman Donna 194  
 Coleman Charlo 0256  
 S A V Blackcap May 4136  
 RR 7407 Rainmaker 2154  
 Terrlene Beauty 35F

BW		205 Wt			Dam's Nursing Ratio				
84		779			1 - 114				
CED	BW	WW	YW	SC	MILK	MARB	RE	\$M	\$W
5	1.4	70	121	.82	30	.11	.56	75	77

% Actual weight as of December 31, 2021: 1510

## 46 **COLEMAN BRAVO 0264**

BULL **20178436** TATTOO **0264** DOB: **07/07/20**

Coleman Charlo 0256  
**Coleman Bravo 6313**  
 18734838 Coleman Donna 714

O C C Juneau 807J  
**Coleman Donna 0308**  
 17089286 Coleman Donna 732

O C C Paxton 730P  
 Bohi Abigale 6014  
 Connealy Onward  
 Coleman Donna 386  
 O C C Emblazon 854E  
 O C C Dixie Erica 903E  
 Connealy Onward  
 Coleman Donna 386

BW		205 Wt			Dam's Nursing Ratio				
83		700			6 - 105				
CED	BW	WW	YW	SC	MILK	MARB	RE	\$M	\$W
10	0.5	56	94	.99	25	.20	.46	97	68

% Actual weight as of December 31, 2021: 1505

## 47 **COLEMAN PLAYMAKER 0474**

BULL **20178490** TATTOO **0474** DOB: **07/11/20**

GDAR Game Day 449  
**Coleman Playmaker 427**  
 17914039 Coleman Donna 714

S A V President 6847  
**Coleman Donna 8297**  
 19400621 Coleman Donna 197

Boyd New Day 8005  
 G D A R Miss Wix 474  
 Connealy Onward  
 Coleman Donna 386  
 Coleman Charlo 0256  
 S A V Blackcap May 4136  
 Basin Rainmaker 654X  
 KMK Donna J311

BW		205 Wt			Dam's Nursing Ratio				
84		748			1 - 110				
CED	BW	WW	YW	SC	MILK	MARB	RE	\$M	\$W
6	0.9	58	105	.56	33	-.08	.40	79	69

% Actual weight as of December 31, 2021: 1575

## 48 **COLEMAN BRAVO 0254**

BULL **20206534** TATTOO **0254** DOB: **07/02/20**

Coleman Charlo 0256  
**Coleman Bravo 6313**  
 18734838 Coleman Donna 714

S A V Renown 3439  
**Coleman Donna 7301**  
 19103417 Coleman Donna 3220

O C C Paxton 730P  
 Bohi Abigale 6014  
 Connealy Onward  
 Coleman Donna 386  
 Rito 707 of Ideal 3407 7075  
 S A V Blackcap May 4136  
 N Bar Shadow X4124  
 Coleman Donna 714

BW		205 Wt			Dam's Nursing Ratio				
88		710			-				
CED	BW	WW	YW	SC	MILK	MARB	RE	\$M	\$W
8	1.1	63	111	.16	20	.02	.65	79	64

% Actual weight as of December 31, 2021: 1505



COLEMAN **DONNA** 0308 – DAM OF LOTS 14, 46, 84, AND 86.



COLEMAN **PLAYMAKER** 0474 – HE SELLS AS LOT 47.



COLEMAN **BRAVO** 0254 – HE SELLS AS LOT 48.

# YOUR MATERNAL SOURCE

## 49 COLEMAN BRAVO 0383

BULL 20178462 TATTOO 0383 DOB: 07/01/20

Coleman Charlo 0256  
**Coleman Bravo 6313**  
 18734838 Coleman Donna 714

Coleman Juneau 044  
**Coleman Donna 6318**  
 18734955 Coleman Donna 801

O C C Paxton 730P  
 Bohi Abigale 6014  
 Connealy Onward  
 Coleman Donna 386  
 O C C Juneau 807J  
 Coleman Donna 714  
 N Bar Emulation EXT  
 KMK Donna J311

BW		205 Wt				Dam's Nursing Ratio			
72		660				3 - 103			
CED	BW	WW	YW	SC	MILK	MARB	RE	\$M	\$W
17	-2.6	44	80	.25	29	.07	.39	80	56

% Actual weight as of December 31, 2021: 1505



COLEMAN BRAVO 0383 – HE SELLS AS LOT 49.

## 50 COLEMAN RESOLVE 0418

BULL 20178477 TATTOO 0418 DOB: 07/24/20

S AV Renown 3439  
**Coleman Resolve 7219**  
 19102305 Coleman Donna 714

Coleman Playmaker 427  
**Coleman Donna 7412**  
 19102700 Coleman Donna 5412

Rito 707 of Ideal 3407 7075  
 S AV Blackcap May 4136  
 Connealy Onward  
 Coleman Donna 386  
 GDAR Game Day 449  
 Coleman Donna 714  
 Coleman Charlo 0256  
 Coleman Donna 0296

BW		205 Wt				Dam's Nursing Ratio			
65		685				1 - 104			
CED	BW	WW	YW	SC	MILK	MARB	RE	\$M	\$W
9	0.7	68	117	.88	22	-.09	.79	83	71

% Actual weight as of December 31, 2021: 1535



COLEMAN RESOLVE 0418 – HE SELLS AS LOT 50.

## 51 COLEMAN SUMMITT 0442

BULL 20178483 TATTOO 0442 DOB: 06/29/20

S AV Renown 3439  
**ZWT Summitt 6507**  
 18561289 Coleman Donna 714

O C C Paxton 730P  
**Coleman Dixie Erica 8189**  
 19400592 Coleman Dixie Erica 8273

Rito 707 of Ideal 3407 7075  
 S AV Blackcap May 4136  
 Connealy Onward  
 Coleman Donna 386  
 O C C Focus 813F  
 O C C Blackbird 736K  
 Leachman Right Time  
 Coleman Dixie Erica 143

BW		205 Wt				Dam's Nursing Ratio			
73		666				1 - 98			
CED	BW	WW	YW	SC	MILK	MARB	RE	\$M	\$W
12	-0.9	54	101	-.05	20	.35	.40	74	52

% Actual weight as of December 31, 2021: 1555



COLEMAN ERISKAY 291 – DAM OF LOTS 44 AND 52.

## 52 COLEMAN BRAVO 0256

BULL 20178431 TATTOO 0256 DOB: 06/26/20

Coleman Charlo 0256  
**Coleman Bravo 6313**  
 18734838 Coleman Donna 714

Coleman Juneau 044  
**Coleman Eriskay 291**  
 17246470 Sinclair Eriskay 2N1 7883

O C C Paxton 730P  
 Bohi Abigale 6014  
 Connealy Onward  
 Coleman Donna 386  
 O C C Juneau 807J  
 Coleman Donna 714  
 D H D Traveler 6807  
 Papa Eriskay 7883

BW		205 Wt				Dam's Nursing Ratio			
66		641				7 - 104			
CED	BW	WW	YW	SC	MILK	MARB	RE	\$M	\$W
17	-1.5	49	90	.76	25	.13	.43	78	59

% Actual weight as of December 31, 2021: 1485

## Time well spent!

I've always felt that the most important key in selecting your bull battery is to spend a day visiting and looking at the cowherd or cowherds where you buy your bulls. If you like the cows and the management of them, that's where you need to be buying your bulls. It's pretty simple, bulls produce daughters like their mothers and grandmothers!

# % COLEMAN ANGUS



COLEMAN **BRAVO** 0278 – HE SELLS AS LOT 55.

## 55 COLEMAN BRAVO 0278

BULL **20178438** TATTOO **0278** DOB: **07/07/20**

Coleman Charlo 0256  
**Coleman Bravo 6313**  
 18734838 Coleman Donna 714  
 Coleman Juneau 044  
**Coleman Donna 3347**  
 17783598 Coleman Donna 801

O C C Paxton 730P  
 Bohi Abigale 6014  
 Connealy Onward  
 Coleman Donna 386  
 O C C Juneau 807J  
 Coleman Donna 714  
 N Bar Emulation EXT  
 KMK Donna J311

BW		205 Wt				Dam's Nursing Ratio			
90		710				6 - 103			
CED	BW	WW	YW	SC	MILK	MARB	RE	\$M	\$W
12	0.2	51	90	1.39	27	.06	.44	83	63

% Actual weight as of December 31, 2021: 1545

## 53 COLEMAN ROCK 0377

BULL **20178459** TATTOO **0377** DOB: **07/01/20**

O C C Juneau 807J  
**Coleman Rock 7200**  
 19107936 Coleman Donna 714  
 Cole Creek Black Cedar 46P  
**Coleman Donna 6266**  
 18736796 Coleman Donna 208

O C C Emblazon 854E  
 O C C Dixie Erica 903E  
 Connealy Onward  
 Coleman Donna 386  
 C H Quantum 6247  
 Cole Creek Clova Juanada 67  
 R R Rito 707  
 Coleman Donna 714

BW		205 Wt				Dam's Nursing Ratio			
78		723				3 - 104			
CED	BW	WW	YW	SC	MILK	MARB	RE	\$M	\$W
4	1.9	77	122	1.51	22	-.01	.39	76	77

% Actual weight as of December 31, 2021: 1525

## 56 COLEMAN RESOURCE 0603

BULL **20209414** TATTOO **0603** DOB: **07/09/20**

Rito 707 of Ideal 3407 7075  
**S A V Resource 1441**  
 17016597 S A V Blackcap May 4136  
 Coleman Final Answer 222  
**JVC Dixie Erica 5432**  
 18237228 Coleman Dixie Erica 2348

R R Rito 707  
 Ideal 3407 of 1418 076  
 S A V 8180 Traveler 004  
 S A V May 2397  
 S A V Final Answer 0035  
 Coleman Donna 714  
 Coleman Missing Link 017  
 Coleman Dixie Erica 0121

BW		205 Wt				Dam's Nursing Ratio			
82		663				4 - 102			
CED	BW	WW	YW	SC	MILK	MARB	RE	\$M	\$W
9	0.5	57	107	.88	22	.09	.62	58	53

% Actual weight as of December 31, 2021: 1545

## 54 COLEMAN RENOWN 0413

BULL **20178474** TATTOO **0413** DOB: **06/25/20**

Rito 707 of Ideal 3407 7075  
**S A V Renown 3439**  
 17633839 S A V Blackcap May 4136  
 Coleman Knight 209  
**Coleman Everelda Entense7302**  
 19102677 Coleman Everelda Entense3280

R R Rito 707  
 Ideal 3407 of 1418 076  
 S A V 8180 Traveler 004  
 S A V May 2397  
 R R Rito 707  
 Coleman Donna 714  
 Wulffs Ext 6106  
 Coleman Everelda Entense8165

BW		205 Wt				Dam's Nursing Ratio			
77		745				2 - 105			
CED	BW	WW	YW	SC	MILK	MARB	RE	\$M	\$W
5	0.8	63	101	.51	18	-.02	.46	66	59

% Actual weight as of December 31, 2021: 1525

## 57 COLEMAN BRAVO 0376

BULL **20178458** TATTOO **0376** DOB: **06/29/20**

Coleman Charlo 0256  
**Coleman Bravo 6313**  
 18734838 Coleman Donna 714  
 Cole Creek Black Cedar 46P  
**Coleman Donna 6257**  
 18736777 Coleman Donna 3347

O C C Paxton 730P  
 Bohi Abigale 6014  
 Connealy Onward  
 Coleman Donna 386  
 C H Quantum 6247  
 Cole Creek Clova Juanada 67  
 Coleman Juneau 044  
 Coleman Donna 801

BW		205 Wt				Dam's Nursing Ratio			
82		706				3 - 105			
CED	BW	WW	YW	SC	MILK	MARB	RE	\$M	\$W
12	-0.4	55	94	1.14	26	.17	.45	77	61

% Actual weight as of December 31, 2021: 1485



COLEMAN **DONNA** 801 – GRANDDAM OF LOTS 55 AND 102.





# PERFORMANCE TESTED BULL SALE %

## 59 COLEMAN RESOLVE 0432

BULL 20178481 TATTOO 0432 DOB: 07/24/20

S AV Renown 3439  
**Coleman Resolve 7219**  
 19102305 Coleman Donna 714

Coleman Playmaker 427  
**Coleman Donna 7412**  
 19102700 Coleman Donna 5412

Rito 707 of Ideal 3407 7075  
 S AV Blackcap May 4136  
 Connealy Onward  
 Coleman Donna 386  
 GDAR Game Day 449  
 Coleman Donna 714  
 Coleman Charlo 0256  
 Coleman Donna 0296



COLEMAN BRAVO 0492 – HE SELLS AS LOT 60.

BW		205 Wt			Dam's Nursing Ratio				
72		708			1 - 104				
CED	BW	WW	YW	SC	MILK	MARB	RE	\$M	\$W
9	0.7	68	117	.81	22	-.09	.79	83	71

% Actual weight as of December 31, 2021: 1525

## 60 COLEMAN BRAVO 0492

BULL 20178498 TATTOO 0492 DOB: 07/10/20

Coleman Charlo 0256  
**Coleman Bravo 6313**  
 18734838 Coleman Donna 714

Coleman Navigator 614  
**Coleman Donna 8375**  
 19400644 Coleman Donna 4218

O C C Paxton 730P  
 Bohi Abigale 6014  
 Connealy Onward  
 Coleman Donna 386  
 Cole Creek Black Cedar 46P  
 Coleman Eriskay 291  
 GDAR Game Day 449  
 Coleman Donna 714

## 62 COLEMAN ROCK 0430

BULL 20178480 TATTOO 0430 DOB: 07/01/20

O C C Juneau 807J  
**Coleman Rock 7200**  
 19107936 Coleman Donna 714

Coleman Charlo 0256  
**Coleman Donna 7388**  
 19102694 Coleman Donna 5318

O C C Emblazon 854E  
 O C C Dixie Erica 903E  
 Connealy Onward  
 Coleman Donna 386  
 O C C Paxton 730P  
 Bohi Abigale 6014  
 GDAR Game Day 449  
 Coleman Donna 714

BW		205 Wt			Dam's Nursing Ratio				
84		674			1 - 99				
CED	BW	WW	YW	SC	MILK	MARB	RE	\$M	\$W
6	1.5	61	113	.97	21			72	53

% Actual weight as of December 31, 2021: 1645

BW		205 Wt			Dam's Nursing Ratio				
88		685			2 - 102				
CED	BW	WW	YW	SC	MILK	MARB	RE	\$M	\$W
5	1.6	68	122	1.95	22	.32	.26	75	69

% Actual weight as of December 31, 2021: 1675

## 61 COLEMAN RESOLVE 0261

BULL 20178434 TATTOO 0261 DOB: 07/31/20

S AV Renown 3439  
**Coleman Resolve 7219**  
 19102305 Coleman Donna 714

GDAR Game Day 449  
**Coleman Donna 439**  
 17914042 Coleman Donna 714

Rito 707 of Ideal 3407 7075  
 S AV Blackcap May 4136  
 Connealy Onward  
 Coleman Donna 386  
 Boyd New Day 8005  
 G D A R Miss Wix 474  
 Connealy Onward  
 Coleman Donna 386

## 63 COLEMAN CHARLO 0443

BULL 20178484 TATTOO 0443 DOB: 07/02/20

O C C Paxton 730P  
**Coleman Charlo 0256**  
 16879074 Bohi Abigale 6014

HF Kodiak 5R  
**Coleman Donna 8193**  
 19403156 Coleman Donna 714

O C C Focus 813F  
 O C C Blackbird 736K  
 Sitz Traveler 8180  
 S AV Abigale 6062  
 Sandy Bar Advantage 43M  
 Wilbar Ruby 955N  
 Connealy Onward  
 Coleman Donna 386

BW		205 Wt			Dam's Nursing Ratio				
82		727			5 - 107				
CED	BW	WW	YW	SC	MILK	MARB	RE	\$M	\$W
11	0.3	59	107	.64	27	-.30	.72	78	66

% Actual weight as of December 31, 2021: 1525

BW		205 Wt			Dam's Nursing Ratio				
80		695			1 - 102				
CED	BW	WW	YW	SC	MILK	MARB	RE	\$M	\$W
6	1.1	62	108	.83	22	.35	.40	64	61

% Actual weight as of December 31, 2021: 1515



COLEMAN DONNA 439 – DAM OF LOTS 1, 61, 75, 83, 152, 153, 157, 158, 159, 181, AND 186.



COLEMAN CHARLO 0443 – HE SELLS AS LOT 63.

# % COLEMAN ANGUS



COLEMAN **BRAVO** 0628 – HE SELLS AS LOT 64.

## 64 COLEMAN BRAVO 0628

BULL 20178508 TATTOO 0628 DOB: 07/12/20

Coleman Charlo 0256  
**Coleman Bravo 6313**  
 18734838 Coleman Donna 714  
 Coleman Missing Link 017  
**Coleman Rita 4495**  
 18105746 Coleman Rita 1310

O C C Paxton 730P  
 Bohi Abigale 6014  
 Connealy Onward  
 Coleman Donna 386  
 O C C Missing Link 830M  
 Coleman Everelda Entense 840  
 S Chisum 6175  
 Coleman Rita 8219

BW		205 Wt				Dam's Nursing Ratio			
CED	BW	WW	YW	SC	MILK	MARB	RE	\$M	\$W
12	0.2	52	96	.62	21	.25	.33	69	50

% Actual weight as of December 31, 2021: 1515

## 65 COLEMAN ROCK 0405

BULL 20178471 TATTOO 0405 DOB: 07/21/20

O C C Juneau 807J  
**Coleman Rock 7200**  
 19107936 Coleman Donna 714  
 S AV Resource 1441  
**Coleman Donna 7231**  
 19108071 Coleman Donna 714

O C C Emblazon 854E  
 O C C Dixie Erica 903E  
 Connealy Onward  
 Coleman Donna 386  
 Rito 707 of Ideal 3407 7075  
 S AV Blackcap May 4136  
 Connealy Onward  
 Coleman Donna 386

BW		205 Wt				Dam's Nursing Ratio			
CED	BW	WW	YW	SC	MILK	MARB	RE	\$M	\$W
7	0.6	73	127	.29	28	.00	.64	74	81

% Actual weight as of December 31, 2021: 1510

## 67 COLEMAN ROCK 0417

BULL 20178476 TATTOO 0417 DOB: 07/07/20

O C C Juneau 807J  
**Coleman Rock 7200**  
 19107936 Coleman Donna 714  
 S AV Renown 3439  
**Coleman Donna 7321**  
 19108104 Coleman Donna 4218

O C C Emblazon 854E  
 O C C Dixie Erica 903E  
 Connealy Onward  
 Coleman Donna 386  
 Rito 707 of Ideal 3407 7075  
 S AV Blackcap May 4136  
 GDAR Game Day 449  
 Coleman Donna 714

BW		205 Wt				Dam's Nursing Ratio			
CED	BW	WW	YW	SC	MILK	MARB	RE	\$M	\$W
11	-0.4	70	120	.71	21	-.15	.66	71	72

% Actual weight as of December 31, 2021: 1545



COLEMAN **DONNA** 714– HER INFLUENCE SELLS.



COLEMAN **ROCK** 7200

HIS SONS SELL AS LOTS 9, 53, 62, 65, 67, 149, 179, AND 183.

## The mother cow (factory)

We believe that it all starts with the mother cow. There is a big difference between a good cow and a great cow. A great breeding bull is known because they “stamp” their calves. It’s the same with a great cow; she should be able to “stamp” her calves regardless of who the sire is. They calve early each year, bring in a big calf at weaning, gentle with beautiful udders. Then you see that their daughters are doing the same thing. These are the ones that make a ranch profitable. We have seen a tremendous increase in the quality and consistency of our cowherd. This is resulting from the large groups of females that are 1/2, 3/4, and full sisters. Consistency is one of the most profitable traits that make the difference between a good calf crop and a great one.



# YOUR MATERNAL SOURCE



COLEMAN **MARSHALL** 0402 – HE SELLS AS LOT 68.



COLEMAN **DONNA** 5247 – PATERNAL GRANDDAM OF LOTS 45, 71, AND 74.

## 68 COLEMAN MARSHALL 0402

BULL **20178470** TATTOO **0402** DOB: **07/29/20**

S AV Resource 1441  
**Coleman Marshall 7170**  
 19102287 Coleman Donna 197

O C C Juneau 807J  
**Coleman Donna 7201**  
 19107939 Coleman Donna 714

Rito 707 of Ideal 3407 7075  
 S AV Blackcap May 4136  
 Basin Rainmaker 654X  
 KMK Donna J311  
 O C C Emblazon 854E  
 O C C Dixie Erica 903E  
 Connealy Onward  
 Coleman Donna 386

BW		205 Wt			Dam's Nursing Ratio				
CED	BW	WW	YW	SC	MILK	MARB	RE	\$M	\$W
10	-0.2	64	109	.31	28	-.02	.72	83	72

% Actual weight as of December 31, 2021: 1510

## 71 COLEMAN GAME CHANGER 0466

BULL **20178487** TATTOO **0466** DOB: **07/30/20**

Coleman Playmaker 427  
**Coleman Game Changer 7369**  
 19102339 Coleman Donna 5247

S AV President 6847  
**Coleman Donna 8266**  
 19400611 Coleman Donna 504

GDAR Game Day 449  
 Coleman Donna 714  
 Coleman Charlo 0256  
 Coleman Donna 194  
 Coleman Charlo 0256  
 S AV Blackcap May 4136  
 S AV Resource 1441  
 Coleman Donna 714

BW		205 Wt			Dam's Nursing Ratio				
CED	BW	WW	YW	SC	MILK	MARB	RE	\$M	\$W
11	0.7	72	133	1.01	26	.07	.63	76	72

% Actual weight as of December 31, 2021: 1565

## 69 COLEMAN REBOUND 0423

BULL **20178478** TATTOO **0423** DOB: **07/29/20**

S AV Renown 3439  
**Coleman Rebound 7220**  
 19102306 Coleman Donna 714

Coleman Maverick 5322  
**Coleman Donna 7361**  
 19102688 Coleman Donna 5220

Rito 707 of Ideal 3407 7075  
 S AV Blackcap May 4136  
 Connealy Onward  
 Coleman Donna 386  
 Coleman Charlo 0256  
 Coleman Donna 3202  
 Connealy Onward  
 Coleman Donna 197

BW		205 Wt			Dam's Nursing Ratio				
CED	BW	WW	YW	SC	MILK	MARB	RE	\$M	\$W
6	1.9	67	127	1.47	29	-.04	.63	86	67

% Actual weight as of December 31, 2021: 1655

## 72 COLEMAN SUMMITT 0640

BULL **20178512** TATTOO **0640** DOB: **07/05/20**

S AV Renown 3439  
**ZWT Summitt 6507**  
 18561289 Coleman Donna 714

Coleman Bravo 6313  
**Coleman Everelda Entense8605**  
 19492044 Coleman Everelda Entense4493

Rito 707 of Ideal 3407 7075  
 S AV Blackcap May 4136  
 Connealy Onward  
 Coleman Donna 386  
 Coleman Charlo 0256  
 Coleman Donna 714  
 Coleman Regis 904  
 Coleman Everelda Entense1306

BW		205 Wt			Dam's Nursing Ratio				
CED	BW	WW	YW	SC	MILK	MARB	RE	\$M	\$W
11	0.0	63	111	.31	22	-.04	.62	80	63

% Actual weight as of December 31, 2021: 1495

## 70 COLEMAN SUMMITT 0497

BULL **20178501** TATTOO **0497** DOB: **07/04/20**

S AV Renown 3439  
**ZWT Summitt 6507**  
 18561289 Coleman Donna 714

Coleman Bravo 6313  
**Coleman Donna 8393**  
 19400650 Coleman Donna 5225

Rito 707 of Ideal 3407 7075  
 S AV Blackcap May 4136  
 Connealy Onward  
 Coleman Donna 386  
 Coleman Charlo 0256  
 Coleman Donna 714  
 Connealy Onward  
 Coleman Donna 197

BW		205 Wt			Dam's Nursing Ratio				
CED	BW	WW	YW	SC	MILK	MARB	RE	\$M	\$W
14	-0.9	60	106	.62	24			82	61

% Actual weight as of December 31, 2021: 1515



COLEMAN **SUMMITT** 0640 – HE SELLS AS LOT 72.

# % COLEMAN ANGUS

“Good morning Larry,  
Abigale 9125 had a real nice heifer calf this  
am. Both look great & are doing fine. Just  
thought I would let you know. Thanks for  
making a great pair.”

Scott Woods  
Kansas

## 73 COLEMAN NAVIGATOR 0337

BULL 20178448 TATTOO 0337 DOB: 07/21/20

Cole Creek Black Cedar 46P  
**Coleman Navigator 614**  
18570027 Coleman Eriskay 291

Connealy Onward  
**Coleman Abigale 685**  
18573941 Coleman Abigale 0277

CH Quantum 6247  
Cole Creek Clova Juanada 67  
Coleman Juneau 044  
Sinclair Eriskay 2N1 7883  
Connealy Lead On  
Altune of Conanga 6104  
O C C Paxton 730P  
Bohi Abigale 6014

BW		205 Wt			Dam's Nursing Ratio				
CED	BW	WW	YW	SC	MILK	MARB	RE	\$M	\$W
6	1.5	60	106	1.24	22	.19	.58	57	56

% Actual weight as of December 31, 2021: 1555

## 74 COLEMAN GAME CHANGER 0461

BULL 20178486 TATTOO 0461 DOB: 07/07/20

Coleman Playmaker 427  
**Coleman Game Changer 7369**  
19102339 Coleman Donna 5247

S AV President 6847  
**Coleman Donna 8255**  
19402537 Coleman Donna 3125

GDAR Game Day 449  
Coleman Donna 714  
Coleman Charlo 0256  
Coleman Donna 194  
Coleman Charlo 0256  
S AV Blackcap May 4136  
Leachman Right Time  
Coleman Donna 714

BW		205 Wt			Dam's Nursing Ratio				
CED	BW	WW	YW	SC	MILK	MARB	RE	\$M	\$W
10	0.6	63	116	.79	28			81	64

% Actual weight as of December 31, 2021: 1555



COLEMAN DONNA 3125 – GRANDDAM OF LOT 74.

## 75 COLEMAN RESOLVE 0320

BULL 20178446 TATTOO 0320 DOB: 07/25/20

S AV Renown 3439  
**Coleman Resolve 7219**  
19102305 Coleman Donna 714

GDAR Game Day 449  
**Coleman Donna 439**  
17914042 Coleman Donna 714

Rito 707 of Ideal 3407 7075  
S AV Blackcap May 4136  
Connealy Onward  
Coleman Donna 386  
Boyd New Day 8005  
G D A R Miss Wix 474  
Connealy Onward  
Coleman Donna 386

BW		205 Wt			Dam's Nursing Ratio				
CED	BW	WW	YW	SC	MILK	MARB	RE	\$M	\$W
11	0.3	59	107	.69	27	-.30	.72	78	66

% Actual weight as of December 31, 2021: 1550

## 76 COLEMAN BRAVO 0608

BULL 20178502 TATTOO 0608 DOB: 07/06/20

Coleman Charlo 0256  
**Coleman Bravo 6313**  
18734838 Coleman Donna 714

N Bar Emulation EXT  
**Coleman Donna 8309**  
16492470 Coleman Donna 4102

O C C Paxton 730P  
Bohi Abigale 6014  
Connealy Onward  
Coleman Donna 386  
Emulation N Bar 5522  
N Bar Primrose 2424  
G A R Precision 1680  
KMK Donna J311

BW		205 Wt			Dam's Nursing Ratio				
CED	BW	WW	YW	SC	MILK	MARB	RE	\$M	\$W
12	-0.8	48	81	.65	23	.22	.31	73	52

% Actual weight as of December 31, 2021: 1515

## 77 COLEMAN BRAVO 0458

BULL 20178485 TATTOO 0458 DOB: 06/27/20

Coleman Charlo 0256  
**Coleman Bravo 6313**  
18734838 Coleman Donna 714

Wulffs Ext 6106  
**Coleman Donna 8252**  
19403105 Coleman Donna 989

O C C Paxton 730P  
Bohi Abigale 6014  
Connealy Onward  
Coleman Donna 386  
N Bar Emulation EXT  
Wulffs Erica Dianna C116  
R R Rito 707  
Coleman Donna 386

BW		205 Wt			Dam's Nursing Ratio				
CED	BW	WW	YW	SC	MILK	MARB	RE	\$M	\$W
11	-0.2	53	91	-.05	20	-.11	.31	84	52

% Actual weight as of December 31, 2021: 1515

## 78 COLEMAN SUMMITT 0481

BULL 20178491 TATTOO 0481 DOB: 07/20/20

S AV Renown 3439  
**ZWT Summitt 6507**  
18561289 Coleman Donna 714

Coleman Bravo 6313  
**Coleman Abigale 8327**  
19400629 Bohi Abigale 6014

Rito 707 of Ideal 3407 7075  
S AV Blackcap May 4136  
Connealy Onward  
Coleman Donna 386  
Coleman Charlo 0256  
Coleman Donna 714  
Sitz Traveler 8180  
S AV Abigale 6062

BW		205 Wt			Dam's Nursing Ratio				
CED	BW	WW	YW	SC	MILK	MARB	RE	\$M	\$W
9	0.5	60	109	.64	23	.22	.60	70	59

% Actual weight as of December 31, 2021: 1505

# PERFORMANCE TESTED BULL SALE %

## 79 COLEMAN SUMMITT 0490

BULL 20178497 TATTOO 0490 DOB: 07/01/20

S AV Renown 3439 Rito 707 of Ideal 3407 7075  
**ZWT Summitt 6507** S AV Blackcap May 4136  
 18561289 Coleman Donna 714 Connealy Onward  
 Coleman Donna 386  
 Coleman Bravo 6313 Coleman Charlo 0256  
**Coleman Everelda Entense8365** Coleman Donna 714  
 19400640 Coleman Everelda Entense3280 Wulffs Ext 6106  
 Coleman Everelda Entense8165

BW		205 Wt				Dam's Nursing Ratio			
73		654				1 - 96			
CED	BW	WW	YW	SC	MILK	MARB	RE	\$M	\$W
13	-0.5	52	98	.49	21			71	47

% Actual weight as of December 31, 2021: 1485

## 83 COLEMAN RESOLVE 0280

BULL 20178439 TATTOO 0280 DOB: 07/25/20

S AV Renown 3439 Rito 707 of Ideal 3407 7075  
**Coleman Resolve 7219** S AV Blackcap May 4136  
 19102305 Coleman Donna 714 Connealy Onward  
 Coleman Donna 386  
 GDAR Game Day 449 Boyd New Day 8005  
**Coleman Donna 439** G D A R Miss Wix 474  
 17914042 Coleman Donna 714 Connealy Onward  
 Coleman Donna 386

BW		205 Wt				Dam's Nursing Ratio			
74		715				5 - 107			
CED	BW	WW	YW	SC	MILK	MARB	RE	\$M	\$W
11	0.3	59	107	1.00	27	-.30	.72	78	66

% Actual weight as of December 31, 2021: 1425

## 80 COLEMAN SUMMITT 0488

BULL 20178495 TATTOO 0488 DOB: 07/06/20

S AV Renown 3439 Rito 707 of Ideal 3407 7075  
**ZWT Summitt 6507** S AV Blackcap May 4136  
 18561289 Coleman Donna 714 Connealy Onward  
 Coleman Donna 386  
 Coleman Engage 5256 Coleman Charlo 0256  
**Coleman Everelda Entense8357** Coleman Everelda Entense1169  
 19400639 Coleman Everelda Entense2407 Coleman Juneau 044  
 Coleman Everelda Entense 840

BW		205 Wt				Dam's Nursing Ratio			
81		675				1 - 99			
CED	BW	WW	YW	SC	MILK	MARB	RE	\$M	\$W
10	0.9	61	108	.91	22			76	57

% Actual weight as of December 31, 2021: 1485



COLEMAN RESOLVE 0280 – HE SELLS AS LOT 83.

## 81 COLEMAN REBOUND 0406

BULL 20178472 TATTOO 0406 DOB: 07/24/20

S AV Renown 3439 Rito 707 of Ideal 3407 7075  
**Coleman Rebound 7220** S AV Blackcap May 4136  
 19102306 Coleman Donna 714 Connealy Onward  
 Coleman Donna 386  
 Coleman Charlo 0256 O C C Paxton 730P  
**Coleman Donna 7241** Bohi Abigale 6014  
 19102659 Coleman Donna 2252 Wulffs Ext 6106  
 Coleman Donna 989

BW		205 Wt				Dam's Nursing Ratio			
92		684				2 - 104			
CED	BW	WW	YW	SC	MILK	MARB	RE	\$M	\$W
1	2.7	62	110	.85	24	-.12	.63	74	58

% Actual weight as of December 31, 2021: 1545



COLEMAN REBOUND 0357 – HE SELLS AS LOT 82.

## 82 COLEMAN REBOUND 0357

BULL 20178450 TATTOO 0357 DOB: 07/21/20

S AV Renown 3439 Rito 707 of Ideal 3407 7075  
**Coleman Rebound 7220** S AV Blackcap May 4136  
 19102306 Coleman Donna 714 Connealy Onward  
 Coleman Donna 386  
 Coleman Knight 209 R R Rito 707  
**Coleman Abigale 5218** Coleman Donna 714  
 18402659 Coleman Abigale 0277 O C C Paxton 730P  
 Bohi Abigale 6014

BW		205 Wt				Dam's Nursing Ratio			
92		677				4 - 105			
CED	BW	WW	YW	SC	MILK	MARB	RE	\$M	\$W
-1	3.1	57	103	.51	25	.12	.50	72	52

% Actual weight as of December 31, 2021: 1525

“Coleman Angus bulls have made a positive impact on our cowherd. Their moderate framed, muscular bulls are easy fleshing, take little winter feed and have good quiet dispositions. When we sorted our replacement heifers, 75% of those retained were sired by Coleman bulls. They are high volume, easy fleshing females that will make moderate-framed cows that we appreciate in our family operation. We plan to add more Coleman bulls this year. They are the kind of bulls that will help keep our program profitable.”

Clyde Brewer III  
 Melstone, MT

# % COLEMAN ANGUS



## The Key to the Puzzle = Balance

It's the hardest thing to keep in the front of our minds. We always want to think that bigger is better, or we buy bulls based on spread EPDs, or we choose a bull because he has one trait that really stands out. We've all been guilty of it, but the real key is to "balance" the ones that do all things well. I really believe that this is one of the hardest, if not the hardest, hurdle in breeding cattle. If we can stay focused on this, it will make us more profitable and better cattle breeders.



COLEMAN DONNA 0308 – DAM OF LOTS 14, 46, 84, AND 86.



COLEMAN BRAVO 0296 – HE SELLS AS LOT 84.



COLEMAN MARSHALL 0319 – HE SELLS AS LOT 85.

*“Coleman bulls have worked well on our ranch. We purchased two bulls sight unseen in 2005 and were so happy with the performance they showed that we bought seven bulls the next spring. The bulls have proven to work at 7,000 ft. in rugged mountain terrain, or at 5,000 ft. in irrigated pasture. They are versatile, functional, and easy-keeping bulls that do their job in a variety of pasture situations. Thanks, Coleman Angus ”*

*Ryan Malone  
Three Peaks Ranch, Montana*

## 84 COLEMAN BRAVO 0296

BULL 20178440 TATTOO 0296 DOB: 07/01/20

Coleman Charlo 0256  
Coleman Bravo 6313  
18734838  
Coleman Donna 714  
O C C Juneau 807J  
Coleman Donna 0308  
17089286  
Coleman Donna 732  
O C C Paxton 730P  
Bohi Abigale 6014  
Connealy Onward  
Coleman Donna 386  
O C C Emblazon 854E  
O C C Dixie Erica 903E  
Connealy Onward  
Coleman Donna 386

BW		205 Wt				Dam's Nursing Ratio			
66					609				6 - 105
CED	BW	WW	YW	SC	MILK	MARB	RE	\$M	\$W
10	0.5	56	94	.96	25	.20	.46	97	68

% Actual weight as of December 31, 2021: 1430

## 85 COLEMAN MARSHALL 0319

BULL 20178445 TATTOO 0319 DOB: 07/24/20

S A V Resource 1441  
Coleman Marshall 7170  
19102287  
Coleman Donna 197  
RR 7407 Rainmaker 2154  
TIA Beauty 5R  
17262980  
Terrlene Beauty 35F  
Rito 707 of Ideal 3407 7075  
S A V Blackcap May 4136  
Basin Rainmaker 654X  
KMK Donna J311  
A A R Rainmaker 7407  
H A Concepciona 0224  
Terrlene Executive Pride 10D  
KBJ Beauty 257B

BW		205 Wt				Dam's Nursing Ratio			
86					716				2 - 101
CED	BW	WW	YW	SC	MILK	MARB	RE	\$M	\$W
7	0.7	52	95	.37	27	.09	.70	62	58

% Actual weight as of December 31, 2021: 1435

## 86 COLEMAN BRAVO 0299

BULL 20178441 TATTOO 0299 DOB: 07/01/20

Coleman Charlo 0256  
Coleman Bravo 6313  
18734838  
Coleman Donna 714  
O C C Juneau 807J  
Coleman Donna 0308  
17089286  
Coleman Donna 732  
O C C Paxton 730P  
Bohi Abigale 6014  
Connealy Onward  
Coleman Donna 386  
O C C Emblazon 854E  
O C C Dixie Erica 903E  
Connealy Onward  
Coleman Donna 386

BW		205 Wt				Dam's Nursing Ratio			
79					680				6 - 105
CED	BW	WW	YW	SC	MILK	MARB	RE	\$M	\$W
10	0.5	56	94	1.11	25	.20	.46	97	68

% Actual weight as of December 31, 2021: 1425

# YOUR MATERNAL SOURCE

## 87 COLEMAN PLAYMAKER 0641

BULL 20178513 TATTOO 0641 DOB: 07/22/20

GDAR Game Day 449  
**Coleman Playmaker 427**  
 17914039 Coleman Donna 714

Boyd New Day 8005  
 G D A R Miss Wix 474  
 Connealy Onward  
 Coleman Donna 386  
 Coleman Charlo 0256  
 Coleman Donna 714  
 Coleman Missing Link 017  
 Coleman Bonny 1302

Coleman Bravo 6313  
**Coleman Bonny 8604**  
 19492043 Coleman Bonny 4491

BW		205 Wt				Dam's Nursing Ratio				
78		658				1 - 96				
CED	BW	WW	YW	SC	MILK	MARB	RE	\$M	\$W	
9	-0.3	57	101	.92	30	-.13	.42	77	67	

% Actual weight as of December 31, 2021: 1485



COLEMAN PLAYMAKER 0641 – HE SELLS AS LOT 87.

## 88 COLEMAN BRAVO 0440

BULL 20178482 TATTOO 0440 DOB: 07/06/20

Coleman Charlo 0256  
**Coleman Bravo 6313**  
 18734838 Coleman Donna 714

O C C Paxton 730P  
 Bohi Abigale 6014  
 Connealy Onward  
 Coleman Donna 386  
 N Bar Emulation EXT  
 Leachman Erica 0025  
 R R Rito 707  
 Coleman Donna 386

Leachman Right Time  
**Coleman Donna 8187**  
 19403103 Coleman Donna 989

BW		205 Wt				Dam's Nursing Ratio				
80		668				1 - 98				
CED	BW	WW	YW	SC	MILK	MARB	RE	\$M	\$W	
11	0.4	49	89	.55	24	-.12	.36	83	51	

% Actual weight as of December 31, 2021: 1435

## 91 COLEMAN SUMMITT 0486

BULL 20178494 TATTOO 0486 DOB: 06/30/20

S A V Renown 3439  
**ZWT Summitt 6507**  
 18561289 Coleman Donna 714

Rito 707 of Ideal 3407 7075  
 S A V Blackcap May 4136  
 Connealy Onward  
 Coleman Donna 386  
 Coleman Charlo 0256  
 Coleman Donna 714  
 Wulffs Ext 6106  
 Coleman Donna 989

Coleman Bravo 6313  
**Coleman Donna 8348**  
 19400636 Coleman Donna 2212

BW		205 Wt				Dam's Nursing Ratio				
75		706				1 - 104				
CED	BW	WW	YW	SC	MILK	MARB	RE	\$M	\$W	
11	-0.2	57	98	-.11	23			82	57	

% Actual weight as of December 31, 2021: 1445

## 89 COLEMAN RESOLVE 0259

BULL 20178432 TATTOO 0259 DOB: 07/19/20

S A V Renown 3439  
**Coleman Resolve 7219**  
 19102305 Coleman Donna 714

Rito 707 of Ideal 3407 7075  
 S A V Blackcap May 4136  
 Connealy Onward  
 Coleman Donna 386  
 O C C Emblazon 854E  
 O C C Dixie Erica 903E  
 Connealy Onward  
 Coleman Donna 386

O C C Juneau 807J  
**Coleman Donna 040**  
 16584279 Coleman Donna 714

BW		205 Wt				Dam's Nursing Ratio				
65		620				7 - 107				
CED	BW	WW	YW	SC	MILK	MARB	RE	\$M	\$W	
9	0.2	68	115	.62	28	-.01	.85	89	79	

% Actual weight as of December 31, 2021: 1455

## 92 COLEMAN PLAYMAKER 0627

BULL 20178507 TATTOO 0627 DOB: 07/31/20

GDAR Game Day 449  
**Coleman Playmaker 427**  
 17914039 Coleman Donna 714

Boyd New Day 8005  
 G D A R Miss Wix 474  
 Connealy Onward  
 Coleman Donna 386  
 S A V Final Answer 0035  
 Coleman Donna 714  
 S A V Net Worth 4200  
 Coleman Prides of Lass 461

Coleman Regis 904  
**Coleman Prides of Lass 1303**  
 17185317 Coleman Prides of Lass 8114

BW		205 Wt				Dam's Nursing Ratio				
78		703				8 - 104				
CED	BW	WW	YW	SC	MILK	MARB	RE	\$M	\$W	
9	-1.1	51	83	.94	26	.02	.48	75	60	

% Actual weight as of December 31, 2021: 1445

## 90 COLEMAN PLAYMAKER 0623

BULL 20178504 TATTOO 0623 DOB: 08/18/20

GDAR Game Day 449  
**Coleman Playmaker 427**  
 17914039 Coleman Donna 714

Boyd New Day 8005  
 G D A R Miss Wix 474  
 Connealy Onward  
 Coleman Donna 386  
 S A V Final Answer 0035  
 Coleman Donna 714  
 S Chisum 6175  
 Coleman Everelda Entense 703

Coleman Regis 904  
**Coleman Everelda Entense 4493**  
 18105745 Coleman Everelda Entense 1306

BW		205 Wt				Dam's Nursing Ratio				
79		704				5 - 105				
CED	BW	WW	YW	SC	MILK	MARB	RE	\$M	\$W	
11	-2.1	55	97	1.01	29	-.01	.35	83	67	

% Actual weight as of December 31, 2021: 1515



COLEMAN RESOLVE 0259 – HE SELLS AS LOT 89.

# % COLEMAN ANGUS



COLEMAN **RESOLVE** 0307 – HE SELLS AS LOT 93.



COLEMAN **PLAYMAKER** 0626 – HE SELLS AS LOT 96.

## 93 COLEMAN RESOLVE 0307

BULL **20178444** TATTOO **0307** DOB: **07/27/20**

S A V Renown 3439

**Coleman Resolve 7219**

19102305 Coleman Donna 714

O C C Juneau 807J

**Coleman Donna 040**

16584279 Coleman Donna 714

Rito 707 of Ideal 3407 7075

S A V Blackcap May 4136

Connealy Onward

Coleman Donna 386

O C C Emblazon 854E

O C C Dixie Erica 903E

Connealy Onward

Coleman Donna 386

BW		205 Wt			Dam's Nursing Ratio				
CED	BW	WW	YW	SC	MILK	MARB	RE	\$M	\$W
9	0.2	68	115	.50	28	-.01	.85	89	79

% Actual weight as of December 31, 2021: 1435

## 94 COLEMAN RESOLVE 0379

BULL **20178461** TATTOO **0379** DOB: **06/30/20**

S A V Renown 3439

**Coleman Resolve 7219**

19102305 Coleman Donna 714

Coleman Foundation 972

**Coleman Donna 6292**

18734945 Coleman Donna 3126

Rito 707 of Ideal 3407 7075

S A V Blackcap May 4136

Connealy Onward

Coleman Donna 386

R R Rito 707

Coleman Donna 386

Leachman Right Time

Coleman Donna 714

BW		205 Wt			Dam's Nursing Ratio				
CED	BW	WW	YW	SC	MILK	MARB	RE	\$M	\$W
9	0.8	66	117	.29	23	-.13	.60	72	64

% Actual weight as of December 31, 2021: 1515



COLEMAN **PLAYMAKER** 0622 – HE SELLS AS LOT 97.

## 95 COLEMAN PLAYMAKER 0625

BULL **20178505** TATTOO **0625** DOB: **08/20/20**

GDAR Game Day 449

**Coleman Playmaker 427**

17914039 Coleman Donna 714

Coleman Juneau 3345

**Coleman Polly 6521**

18734998 Coleman Polly 2434

Boyd New Day 8005

G D A R Miss Wix 474

Connealy Onward

Coleman Donna 386

Coleman Juneau 044

Coleman Donna 801

Coleman Missing Link 9246

Coleman Polly 9251

BW		205 Wt			Dam's Nursing Ratio				
CED	BW	WW	YW	SC	MILK	MARB	RE	\$M	\$W
9	-0.6	49	89	1.57	27	.01	.35	69	55

% Actual weight as of December 31, 2021: 1455

## 96 COLEMAN PLAYMAKER 0626

BULL **20178506** TATTOO **0626** DOB: **08/12/20**

GDAR Game Day 449

**Coleman Playmaker 427**

17914039 Coleman Donna 714

Wulffs Ext 6106

**Coleman Everelda Entense 703**

15704376 BT Everelda Entense 613L

Boyd New Day 8005

G D A R Miss Wix 474

Connealy Onward

Coleman Donna 386

N Bar Emulation EXT

Wulffs Erica Dianna C116

Sitz Traveler 6802

BT Everelda Entense 567H

BW		205 Wt			Dam's Nursing Ratio				
CED	BW	WW	YW	SC	MILK	MARB	RE	\$M	\$W
9	-1.2	52	89	1.12	27	-.17	.27	81	61

% Actual weight as of December 31, 2021: 1435

## 97 COLEMAN PLAYMAKER 0622

BULL **20178503** TATTOO **0622** DOB: **08/20/20**

GDAR Game Day 449

**Coleman Playmaker 427**

17914039 Coleman Donna 714

Coleman Missing Link 017

**Coleman Polly 3442**

17783654 Coleman Polly 1304

Boyd New Day 8005

G D A R Miss Wix 474

Connealy Onward

Coleman Donna 386

O C C Missing Link 830M

Coleman Everelda Entense 840

Coleman Regis 904

Coleman Polly 9251

BW		205 Wt			Dam's Nursing Ratio				
CED	BW	WW	YW	SC	MILK	MARB	RE	\$M	\$W
10	-1.6	54	93	.92	23	-.01	.29	63	58

% Actual weight as of December 31, 2021: 1425



# PERFORMANCE TESTED BULL SALE %



COLEMAN **PRESIDENT** 0274 – HE SELLS AS LOT 98.

“We purchased our first bulls in 2010, and have bought 18 since. We have been very happy with the bulls. We run up to 7,000 feet in a tough rugged environment, bulls have held up very well, have had no PAP problems, easy to handle, really like the daughters, and the bulls have always kept their condition very well. We will be back again. We really appreciate your dedication to the mother cow in your program.”

Thanks  
John Dooling

## 98 COLEMAN PRESIDENT 0274

BULL **20211104** TATTOO **0274** DOB: **06/27/20**

Coleman Charlo 0256  
**S AV President 6847**  
18578964 S AV Blackcap May 4136

O C C Great Plains 943G  
**Coleman Donna 5207**  
18410196 Coleman Donna 714

O C C Paxton 730P  
Bohi Abigale 6014  
S AV 8180 Traveler 004  
S AV May 2397  
N Bar Emulation EXT  
Dixie Erica of CH 1019  
Connealy Onward  
Coleman Donna 386

BW		205 Wt			Dam's Nursing Ratio					
CED	BW	WW	YW	SC	MILK	MARB	RE	\$M	\$W	
9	0.9	60	100	.18	27	-.08	.74	81	71	

% Actual weight as of December 31, 2021: 1435

## 99 COLEMAN REBOUND 0369

BULL **20178455** TATTOO **0369** DOB: **07/29/20**

S AV Renown 3439  
**Coleman Rebound 7220**  
19102306 Coleman Donna 714

Coleman Charlo 3212  
**Coleman Everelda Entense5447**  
18402814 Coleman Everelda Entense2332

Rito 707 of Ideal 3407 7075  
S AV Blackcap May 4136  
Connealy Onward  
Coleman Donna 386  
Coleman Charlo 0256  
Coleman Donna 714  
Basin Rainmaker 654X  
Coleman Everelda Entense 578

BW		205 Wt			Dam's Nursing Ratio					
CED	BW	WW	YW	SC	MILK	MARB	RE	\$M	\$W	
7	-0.3	54	100	.13	33	-.01	.46	77	65	

% Actual weight as of December 31, 2021: 1405



COLEMAN **REBOUND** 0369 – HE SELLS AS LOT 99.

## 100 COLEMAN SUMMITT 0482

BULL **20178492** TATTOO **0482** DOB: **07/01/20**

S AV Renown 3439  
**ZWT Summitt 6507**  
18561289 Coleman Donna 714

Coleman Bravo 6313  
**Coleman Anita 8331**  
19400630 Pine Coulee Anita W93

Rito 707 of Ideal 3407 7075  
S AV Blackcap May 4136  
Connealy Onward  
Coleman Donna 386  
Coleman Charlo 0256  
Coleman Donna 714  
N Bar Emulation EXT  
B C C Ambush Anita 41-101

BW		205 Wt			Dam's Nursing Ratio					
CED	BW	WW	YW	SC	MILK	MARB	RE	\$M	\$W	
11	-0.4	55	95	.27	21			77	53	

% Actual weight as of December 31, 2021: 1435

## 102 COLEMAN BRAVO 0253

BULL **20178430** TATTOO **0253** DOB: **07/03/20**

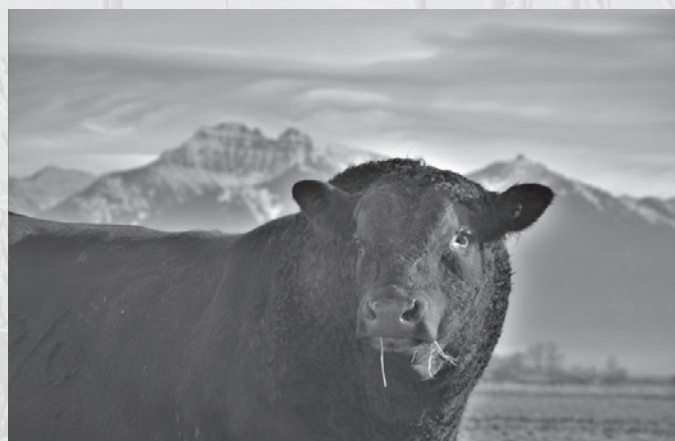
Coleman Charlo 0256  
**Coleman Bravo 6313**  
18734838 Coleman Donna 714

Coleman Juneau 044  
**Coleman Donna 3347**  
17783598 Coleman Donna 801

O C C Paxton 730P  
Bohi Abigale 6014  
Connealy Onward  
Coleman Donna 386  
O C C Juneau 807J  
Coleman Donna 714  
N Bar Emulation EXT  
KMK Donna J311

BW		205 Wt			Dam's Nursing Ratio					
CED	BW	WW	YW	SC	MILK	MARB	RE	\$M	\$W	
12	0.2	51	90	.84	27	.06	.44	83	63	

% Actual weight as of December 31, 2021: 1415



**%**  
**COLEMAN ANGUS**  
YOUR MATERNAL SOURCE  
& **TREXLER Angus**





**THANK YOU  
FOR YOUR  
CONTINUED  
SUPPORT**

# % COLEMAN ANGUS



COLEMAN **NAVIGATOR** 144 - HE SELLS AS LOT 105.

## 105 **COLEMAN NAVIGATOR 144**

BULL **20159293** TATTOO **144** DOB: **01/03/21**

Cole Creek Black Cedar 46P  
**Coleman Navigator 614**  
 18570027 Coleman Eriskay 291  
 S A V Renown 3439  
**Lawsons Chloe C815**  
 18359250 Lawsons Chloe Z341

C H Quantum 6247  
 Cole Creek Clova Juanada 67  
 Coleman Juneau 044  
 Sinclair Eriskay 2N1 7883  
 Rito 707 of Ideal 3407 7075  
 S A V Blackcap May 4136  
 Sitz Upward 307R  
 Basin Chloe 7T26

	BW	205 Wt	365 Wt	Dam's Nursing Ratio					
	97	868	1529	3 - 110					
CED	BW	WW	YW	SC	MILK	MARB	RE	\$M	\$W
-1	2.6	69	127	1.18	26	.06	.72	66	65



COLEMAN **CHLOE** 975 -  
 MATERNAL SISTER TO LOTS  
 105, 106, 107, 110, 113, 114,  
 118, 119, 140, 155, AND 163.



COLEMAN **CHLOE** 900 -  
 MATERNAL SISTER TO LOTS 105,  
 106, 107, 110, 113, 114, 118, 119,  
 140, 155, AND 163.



LAWSONS **CHLOE** C815 - DAM OF LOTS 105, 106, 107, 110, 113,  
 114, 118, 119, 140, 155, AND 163.



COLEMAN **CHLOE** 9275 - MATERNAL SISTER TO LOTS 105, 106,  
 107, 110, 113, 114, 118, 119, 140, 155, AND 163.

# YOUR MATERNAL SOURCE



COLEMAN **NAVIGATOR** 145 - HE SELLS AS LOT 106.

## 106 COLEMAN NAVIGATOR 145

BULL 20159294 TATTOO 145 DOB: 01/04/21

Cole Creek Black Cedar 46P  
**Coleman Navigator 614**  
 183570027 Coleman Eriskay 291

SAV Renown 3439  
**Lawsons Chloe C815**  
 18359250 Lawsons Chloe Z341

CH Quantum 6247  
 Cole Creek Clova Juanada 67  
 Coleman Juneau 044  
 Sinclair Eriskay 2N1 7883  
 Rito 707 of Ideal 3407 7075  
 SAV Blackcap May 4136  
 Sitz Upward 307R  
 Basin Chloe 7T26

BW		205 Wt			365 Wt			Dam's Nursing Ratio	
91		907		1408		3	110		
CED	BW	WW	YW	SC	MILK	MARB	RE	\$M	\$W
-1	2.4	70	119	.98	24	.12	.96	65	68



COLEMAN **CHLOE** 030 -  
 MATERNAL SISTER TO LOTS  
 105, 106, 107, 110, 113, 114,  
 118, 119, 140, 155, AND 163.



COLEMAN **CHLOE** 9274 -  
 MATERNAL SISTER TO LOTS 105,  
 106, 107, 110, 113, 114, 118, 119,  
 140, 155, AND 163.



COLEMAN **TRIUMPH** 9145 - MATERNAL BROTHER TO LOTS 105,  
 106, 107, 110, 113, 114, 118, 119, 140, 155, AND 163.



COLEMAN **CHLOE** 034 - MATERNAL SISTER TO LOTS 105, 106, 107,  
 110, 113, 114, 118, 119, 140, 155, AND 163.

# % COLEMAN ANGUS



COLEMAN **NAVIGATOR** 147 - HE SELLS AS LOT 107.

## 107 COLEMAN NAVIGATOR 147

BULL 20160301 TATTOO 147 DOB: 01/05/21

Cole Creek Black Cedar 46P

C H Quantum 6247

**Coleman Navigator 614**

Cole Creek Clova Juanada 67

18570027

Coleman Eriskay 291

Coleman Juneau 044

Sinclair Eriskay 2N1 7883

Rito 707 of Ideal 3407 7075

S A V Renown 3439

S A V Blackcap May 4136

**Lawsons Chloe C815**

Sitz Upward 307R

18359250

Lawsons Chloe Z341

Basin Chloe 7T26

	BW		205 Wt		365 Wt		Dam's Nursing Ratio		
	87		968		1485		3 - 110		
CED	BW	WW	YW	SC	MILK	MARB	RE	\$M	\$W
-3	2.7	78	133	.63	15	.14	.80	38	62



COLEMAN **TRIUMPH** 9145 - MATERNAL BROTHER TO LOTS 105, 106, 107, 110, 113, 114, 118, 119, 140, 155, AND 163.



LAWSONS **CHLOE** C815 - DAM OF LOTS 105, 106, 107, 110, 113, 114, 118, 119, 140, 155, AND 163.



COLEMAN **CHLOE** 9275 - MATERNAL SISTER TO LOTS 105, 106, 107, 110, 113, 114, 118, 119, 140, 155, AND 163.



COLEMAN **CHLOE** 034 - MATERNAL SISTER TO LOTS 105, 106, 107, 110, 113, 114, 118, 119, 140, 155, AND 163.

# PERFORMANCE TESTED BULL SALE %



COLEMAN **TRIUMPH** 1164 - HE SELLS AS LOT 108.

## 108 COLEMAN TRIUMPH 1164

BULL 20155616 TATTOO 1164 DOB: 01/22/21

Coleman Bravo 6313  
**Coleman Triumph 9145**  
 19555917 Lawsons Chloe C815

Cole Creek Black Cedar 46P  
**Coleman Eriskay 8138**  
 19251880 Coleman Eriskay 291

Coleman Charlo 0256  
 Coleman Donna 714  
 S AV Renown 3439  
 Lawsons Chloe Z341  
 C H Quantum 6247  
 Cole Creek Clova Juanada 67  
 Coleman Juneau 044  
 Sinclair Eriskay 2N1 7883

BW		205 Wt			365 Wt			Dam's Nursing Ratio	
88		904			1491			2 - 110	
CED	BW	WW	YW	SC	MILK	MARB	RE	\$M	\$W
7	2.1	65	123	1.64	20	.21	.29	75	57



COLEMAN **ERISKAY** 718 -  
 MATERNAL SISTER TO THE  
 DAM OF LOT 108.



COLEMAN **NAVIGATOR** 614 -  
 FULL BROTHER TO THE DAM OF  
 LOT 108.



COLEMAN **ERISKAY** 0149 - MATERNAL SISTER TO LOT 108.



COLEMAN **ERISKAY** 291 - GRANDDAM OF LOT 108.

# % COLEMAN ANGUS



COLEMAN **TRIUMPH** 1130 - HE SELLS AS LOT 109

## 109 COLEMAN TRIUMPH 1130

BULL **20155602** TATTOO **1130** DOB: **01/18/21**  
 Coleman Bravo 6313 Coleman Charlo 0256  
**Coleman Triumph 9145** Coleman Donna 714  
 19555917 Lawsons Chloe C815 S A V Renown 3439  
 Lawsons Chloe Z341  
 Coleman Juneau 044  
**Coleman Everelda Entense 2337** Coleman Donna 714  
 17590644 Coleman Everelda Entense 578 Wulffs Ext 6106  
 Sitz Everelda Entense 4789

	BW	205 Wt			365 Wt	Dam's Nursing Ratio		
	86	859			1481	7 - 107		
CED	BW	WW	YW	SC	MILK	MARB	RE	\$M \$W
	5	1.7	70	133	.48	32	.19	.60 50 75



COLEMAN **CHARLO** 161 - HE SELLS AS LOT 110.

## 110 COLEMAN CHARLO 161

BULL **20155636** TATTOO **161** DOB: **01/14/21**  
 O C C Paxton 730P O C C Focus 813F  
**Coleman Charlo 0256** O C C Blackbird 736K  
 16879074 Bohi Abigale 6014 Sitz Traveler 8180  
 S A V Abigale 6062  
 Rito 707 of Ideal 3407 7075  
 S A V Renown 3439 S A V Blackcap May 4136  
**Lawsons Chloe C815** Sitz Upward 307R  
 18359250 Lawsons Chloe Z341 Basin Chloe 7T26

	BW	205 Wt			365 Wt	Dam's Nursing Ratio		
	92	922			1322	3 - 110		
CED	BW	WW	YW	SC	MILK	MARB	RE	\$M \$W
	5	0.9	74	134	1.03	24	-.09	.78 62 78



COLEMAN **BRAVO** 1106 - HE SELLS AS LOT 111.

## 111 COLEMAN BRAVO 1106

BULL **20155590** TATTOO **1106** DOB: **01/21/21**  
 Coleman Charlo 0256 O C C Paxton 730P  
**Coleman Bravo 6313** Bohi Abigale 6014  
 18734838 Coleman Donna 714 Connealy Onward  
 Coleman Donna 386  
 S Alliance 3313  
 S Chisum 6175 S Gloria 464  
**Coleman Everelda Entense 302** O C C Juneau 807J  
 17603369 Coleman Everelda Entense 059 Coleman Everelda Entense 599

	BW	205 Wt			365 Wt	Dam's Nursing Ratio		
	84	912			1458	7 - 106		
CED	BW	WW	YW	SC	MILK	MARB	RE	\$M \$W
	10	1.6	85	137	.73	24	-.11	.83 107 95



COLEMAN **RENOWN** 1219 - HE SELLS AS LOT 112.

## 112 COLEMAN RENOWN 1219

BULL **20155627** TATTOO **1219** DOB: **01/15/21**  
 Rito 707 of Ideal 3407 7075 R R Rito 707  
**S A V Renown 3439** Ideal 3407 of 1418 076  
 17633839 S A V Blackcap May 4136 S A V 8180 Traveler 004  
 S A V May 2397  
 Coleman Charlo 0256 O C C Paxton 730P  
**Coleman Donna 6314** Bohi Abigale 6014  
 18734953 Coleman Donna 714 Connealy Onward  
 Coleman Donna 386

	BW	205 Wt			365 Wt	Dam's Nursing Ratio		
	94	815			1410	3 - 101		
CED	BW	WW	YW	SC	MILK	MARB	RE	\$M \$W
	4	1.8	65	116	.80	20	.22	.73 64 62



# YOUR MATERNAL SOURCE



COLEMAN **EXECUTIVE DECISION** 175 - HE SELLS AS LOT 114.



COLEMAN **CHLOE** 034 - MATERNAL SISTER TO LOTS 105, 106, 107, 110, 113, 114, 118, 119, 140, 155, AND 163.

## 113 COLEMAN CHARLO 164

BULL 20215810 TATTOO 164 DOB: 01/10/21

O C C Paxton 730P  
**Coleman Charlo 0256**  
 16879074 Bohi Abigale 6014

S A V Renown 3439  
**Lawsons Chloe C815**  
 18359250 Lawsons Chloe Z341

O C C Focus 813F  
 O C C Blackbird 736K  
 Sitz Traveler 8180  
 S A V Abigale 6062  
 Rito 707 of Ideal 3407 7075  
 S A V Blackcap May 4136  
 Sitz Upward 307R  
 Basin Chloe 7T26

BW		205 Wt			365 Wt		Dam's Nursing Ratio		
82		843			1345		3 - 110		
CED	BW	WW	YW	SC	MILK	MARB	RE	\$M	\$W
0	2.2	73	127	1.54	25	.45	.69	71	79

## 114 COLEMAN EXECUTIVE DECISION 175

BULL 20155641 TATTOO 175 DOB: 01/11/21

Bar-E-L Natural Law 52Y  
**PM Executive Decision 5'17**  
 19310189 PM Blossom 124'13

S A V Renown 3439  
**Lawsons Chloe C815**  
 18359250 Lawsons Chloe Z341

S A V Bismarck 5682  
 Bar-E-L Magnolia 143K  
 HF Thunderbird 146Y  
 Poplar Meadows Blossom 5'10  
 Rito 707 of Ideal 3407 7075  
 S A V Blackcap May 4136  
 Sitz Upward 307R  
 Basin Chloe 7T26

BW		205 Wt			365 Wt		Dam's Nursing Ratio		
87		817			1284		3 - 110		
CED	BW	WW	YW	SC	MILK	MARB	RE	\$M	\$W
4	1.2	63	116	.64	26	.12	.76	80	69



COLEMAN **CHARLO** 164 - HE SELLS AS LOT 113.



COLEMAN **CHLOE** 9275 - MATERNAL SISTER TO LOTS 105, 106, 107, 110, 113, 114, 118, 119, 140, 155, AND 163.

# % COLEMAN ANGUS



COLEMAN JUSTIFIED 132 - HE SELLS AS LOT 115



COLEMAN JUSTIFIED 133 - HE SELLS AS LOT 117

## 115 COLEMAN JUSTIFIED 132

BULL 20155632 TATTOO 132 DOB: 01/22/21

Connealy Judgment  
**KG Justified 3023**  
 17707279 KG Miss Magic 1443

S A V Resource 1441  
**Coleman Donna 504**  
 18238090 Coleman Donna 714

Connealy Consensus 7229  
 Entrine of Conanga 9876  
 Sitz Wisdom 481T  
 KG Miss Magic 3528  
 Rito 707 of Ideal 3407 7075  
 S A V Blackcap May 4136  
 Connealy Onward  
 Coleman Donna 386

BW		205 Wt			365 Wt		Dam's Nursing Ratio			
80		821			1376		3 - 110			
CED	BW	WW	YW	SC	MILK	MARB	RE	\$M	\$W	
12	-0.4	70	124	1.56	31	.54	.47	82	84	

## 117 COLEMAN JUSTIFIED 133

BULL 20155633 TATTOO 133 DOB: 01/30/21

Connealy Judgment  
**KG Justified 3023**  
 17707279 KG Miss Magic 1443

S A V Resource 1441  
**Coleman Donna 504**  
 18238090 Coleman Donna 714

Connealy Consensus 7229  
 Entrine of Conanga 9876  
 Sitz Wisdom 481T  
 KG Miss Magic 3528  
 Rito 707 of Ideal 3407 7075  
 S A V Blackcap May 4136  
 Connealy Onward  
 Coleman Donna 386

BW		205 Wt			365 Wt		Dam's Nursing Ratio			
78		926			1363		3 - 110			
CED	BW	WW	YW	SC	MILK	MARB	RE	\$M	\$W	
11	-0.9	57	104	1.61	32	.63	.55	77	72	

## 116 COLEMAN JUSTIFIED 134

BULL 20155634 TATTOO 134 DOB: 01/21/21

Connealy Judgment  
**KG Justified 3023**  
 17707279 KG Miss Magic 1443

S A V Resource 1441  
**Coleman Donna 504**  
 18238090 Coleman Donna 714

Connealy Consensus 7229  
 Entrine of Conanga 9876  
 Sitz Wisdom 481T  
 KG Miss Magic 3528  
 Rito 707 of Ideal 3407 7075  
 S A V Blackcap May 4136  
 Connealy Onward  
 Coleman Donna 386

BW		205 Wt			365 Wt		Dam's Nursing Ratio			
80		840			1283		3 - 110			
CED	BW	WW	YW	SC	MILK	MARB	RE	\$M	\$W	
11	-1.0	79	141	2.26	36	.51	.81	98	100	

## 118 COLEMAN NAVIGATOR 148

BULL 20160302 TATTOO 148 DOB: 01/13/21

Cole Creek Black Cedar 46P  
**Coleman Navigator 614**  
 18570027 Coleman Eriskay 291

S A V Renown 3439  
**Lawsons Chloe C815**  
 18359250 Lawsons Chloe Z341

C H Quantum 6247  
 Cole Creek Clova Juanada 67  
 Coleman Juneau 044  
 Sinclair Eriskay 2N1 7883  
 Rito 707 of Ideal 3407 7075  
 S A V Blackcap May 4136  
 Sitz Upward 307R  
 Basin Chloe 7T26

BW		205 Wt			365 Wt		Dam's Nursing Ratio			
97		826			1309		3 - 110			
CED	BW	WW	YW	SC	MILK	MARB	RE	\$M	\$W	
5	1.8	74	125	1.02	24	-.02	.90	74	77	

## 119 COLEMAN NAVIGATOR 146

BULL 20159296 TATTOO 146 DOB: 01/12/21

Cole Creek Black Cedar 46P  
**Coleman Navigator 614**  
 18570027 Coleman Eriskay 291

S A V Renown 3439  
**Lawsons Chloe C815**  
 18359250 Lawsons Chloe Z341

C H Quantum 6247  
 Cole Creek Clova Juanada 67  
 Coleman Juneau 044  
 Sinclair Eriskay 2N1 7883  
 Rito 707 of Ideal 3407 7075  
 S A V Blackcap May 4136  
 Sitz Upward 307R  
 Basin Chloe 7T26

BW		205 Wt			365 Wt		Dam's Nursing Ratio			
87		782			1280		3 - 110			
CED	BW	WW	YW	SC	MILK	MARB	RE	\$M	\$W	
-6	3.5	73	132	1.34	26	.18	.89	54	66	

“For the past 8 years, we have been purchasing Coleman/Trexler Bulls. We started buying these Bulls because we believe that the fastest way to improve cow herd genetics is through bull selection. Our goal was to create the perfect cow herd, one that is uniform, flourishes on grass with lower feed intake, is maternal, and takes care of herself as well as her calf. For the past decade, our calf crop has been marketed through a grass finished program. We have discovered that Coleman/Trexler genetics was the perfect fit for this market given the early maturing easy fleshing characteristics of their genetic base. The carcass traits of our forage finished calves continue to stand out in the marketplace. Coleman/Trexler bulls have improved our cattle grading choice, on the average of 20-40% better than the industry average on forage.”

Flying M Livestock  
 Ellensburg, WA

# PERFORMANCE TESTED BULL SALE %

## 120 COLEMAN BRAVO 1150

BULL 20155610 TATTOO 1150 DOB: 01/21/21

Coleman Charlo 0256  
**Coleman Bravo 6313**  
 18734838 Coleman Donna 714

S A V Resource 1441  
**Coleman Donna 7100**  
 18838366 Coleman Donna 714

O C C Paxton 730P  
 Bohi Abigale 6014  
 Connealy Onward  
 Coleman Donna 386  
 Rito 707 of Ideal 3407 7075  
 S A V Blackcap May 4136  
 Connealy Onward  
 Coleman Donna 386

BW		205 Wt			365 Wt			Dam's Nursing Ratio		
79		855			1335			3 - 109		
CED	BW	WW	YW	SC	MILK	MARB	RE	\$M	\$W	
15	-0.8	66	117	1.01	26	-.02	.44	95	75	



COLEMAN BRAVO 1150 - HE SELLS AS LOT 120.

## 121 COLEMAN RESOURCE 1110

BULL 20155593 TATTOO 1110 DOB: 01/24/21

S A V Resource 1441  
**Coleman Resource 710**  
 18933682 Coleman Donna 4121

Connealy Onward  
**Coleman Abigale 683**  
 18573936 Coleman Abigale 0277

Rito 707 of Ideal 3407 7075  
 S A V Blackcap May 4136  
 O C C Juneau 807J  
 Coleman Donna 005  
 Connealy Lead On  
 Altune of Conanga 6104  
 O C C Paxton 730P  
 Bohi Abigale 6014

BW		205 Wt			365 Wt			Dam's Nursing Ratio		
89		834			1340			4 - 102		
CED	BW	WW	YW	SC	MILK	MARB	RE	\$M	\$W	
5	1.8	62	116	.89	26	.29	.71	56	59	



COLEMAN DONNA 7100 - DAM OF LOT 120.

## 122 COLEMAN RESOURCE 1129

BULL 20155601 TATTOO 1129 DOB: 01/20/21

S A V Resource 1441  
**Coleman Resource 710**  
 18933682 Coleman Donna 4121

Wulffs Ext 6106  
**Coleman Donna 2252**  
 17544672 Coleman Donna 989

Rito 707 of Ideal 3407 7075  
 S A V Blackcap May 4136  
 O C C Juneau 807J  
 Coleman Donna 005  
 N Bar Emulation EXT  
 Wulffs Erica Dianna C116  
 R R Rito 707  
 Coleman Donna 386

BW		205 Wt			365 Wt			Dam's Nursing Ratio		
84		822			1217			7 - 104		
CED	BW	WW	YW	SC	MILK	MARB	RE	\$M	\$W	
7	0.5	54	88	.66	22	.05	.58	63	55	



COLEMAN RESOURCE 1110 - HE SELLS AS LOT 121

## 123 COLEMAN RENOWN 1217

BULL 20155626 TATTOO 1217 DOB: 01/19/21

Rito 707 of Ideal 3407 7075  
**S A V Renown 3439**  
 17633839 S A V Blackcap May 4136

Coleman Charlo 0256  
**Coleman Donna 6314**  
 18734953 Coleman Donna 714

R R Rito 707  
 Ideal 3407 of 1418 076  
 S A V 8180 Traveler 004  
 S A V May 2397  
 O C C Paxton 730P  
 Bohi Abigale 6014  
 Connealy Onward  
 Coleman Donna 386

BW		205 Wt			365 Wt			Dam's Nursing Ratio		
92		807			1274			3 - 101		
CED	BW	WW	YW	SC	MILK	MARB	RE	\$M	\$W	
4	1.8	65	116	.44	20	.22	.73	64	62	

### Buy The Program – It Makes A Difference!

- Selling Full, ¾, and ½ Brothers
- Bulls Selling are Parent Verified and Free of Any Known Genetic Defects
- Free Delivery Anywhere in the Continental United States
- Free Board Until April 1, 2022
- Fertility Tested
- Volume Discounts: 5 Bulls = 5%; 10 Bulls = 10%
- First Season Breeding Guarantee
- Freeze Branded
- Tested Free of PI-BVD
- Sight Unseen Buyer's Program

# TREXLER ANGUS



TAR CHARLO 124 - HE SELLS AS LOT 124.

## 124 TAR CHARLO 124

BULL 20135252 TATTOO 124 DOB: 01/18/21  
 O C C Paxton 730P  
**Coleman Charlo 0256**  
 16879074 Bohi Abigale 6014  
 Tar Ext 221  
**Tar Miss Wix 541**  
 18241242 TAR Miss Wix 136  
 O C C Focus 813F  
 O C C Blackbird 736K  
 Sitz Traveler 8180  
 S A V Abigale 6062  
 Wulffs Ext 6106  
 Coleman Miss Wix 923  
 Coleman Emblazon 780  
 TAR Miss Wix 940

BW		205 Wt			365 Wt		Dam's Nursing Ratio		
92			700		1327		5 - 99		
CED	BW	WW	YW	SC	MILK	MARB	RE	\$M	\$W
6	1.9	60	109	1.21	22	.43	.34	57	57

## 125 TAR LOGO 109

BULL 20135250 TATTOO 109 DOB: 01/12/21  
 SITZ Logo 12964  
**Coleman Logo 947**  
 19559369 Coleman Donna 7100  
 Pine Coulee Traveler 39B  
**TAR Emulous 924**  
 19538036 Pine Coulee Emulous C175  
 Sitz Tebow 11860  
 SITZ Shauna 3152  
 S A V Resource 1441  
 Coleman Donna 714  
 FairView Traveler 1171  
 MW Black Nellie Rita 032  
 Pine Coulee EXT U160  
 Pine Coulee Emulous W73

BW		205 Wt			365 Wt		Dam's Nursing Ratio		
78			779		1328		1 - 114		
CED	BW	WW	YW	SC	MILK	MARB	RE	\$M	\$W
9	0.8	72	119	1.36	22			94	70



TAR LOGO 109 - HE SELLS AS LOT 125.

## 126 TAR MAVERICK 167

BULL 20135269 TATTOO 167 DOB: 02/07/21  
 Coleman Charlo 0256  
**Coleman Maverick 5322**  
 18402732 Coleman Donna 3202  
 Apex Windy 078  
**Tar Everelda Entense 518**  
 18242196 TAR Everelda Entense 113  
 O C C Paxton 730P  
 Bohi Abigale 6014  
 Wulffs Ext 6106  
 Coleman Donna 714  
 H A R B Windy 702 JH  
 Apexette Lucy 6037  
 Coleman Regis 904  
 BT Everelda Entense 613L

BW		205 Wt			365 Wt		Dam's Nursing Ratio		
102			781		1384		4 - 112		
CED	BW	WW	YW	SC	MILK	MARB	RE	\$M	\$W
6	2.5	63	116	1.35	28	.38	.37	66	63



TAR MAVERICK 167 - HE SELLS AS LOT 126.

## 127 TAR CHARLO 107

BULL 20139913 TATTOO 107 DOB: 01/12/21  
 O C C Paxton 730P  
**Coleman Charlo 0256**  
 16879074 Bohi Abigale 6014  
 Tar EXT 931  
**Tar Enchantress 219**  
 17333871 VC Enchantress 8167  
 O C C Focus 813F  
 O C C Blackbird 736K  
 Sitz Traveler 8180  
 S A V Abigale 6062  
 N Bar Emulation EXT  
 Coleman Miss Wix 923  
 Leachman Right Time  
 Vermilion BC Enchantres 5484

BW		205 Wt			365 Wt		Dam's Nursing Ratio		
75			673		1217		8 - 98		
CED	BW	WW	YW	SC	MILK	MARB	RE	\$M	\$W
11	-2.1	39	71	.91	25	.46	.27	54	46



TAR REBOUND 147 - HE SELLS AS LOT 128.

# PERFORMANCE TESTED BULL SALE %

## 128 TAR REBOUND 147

BULL 20135260 TATTOO 147 DOB: 01/24/21

S AV Renown 3439  
**Coleman Rebound 7220**  
 19102306 Coleman Donna 714

Rito 707 of Ideal 3407 7075  
 S AV Blackcap May 4136  
 Connealy Onward  
 Coleman Donna 386  
 Q A S Traveler 23-4  
 Bemindful Maid D H D 0807  
 Leachman Foreman  
 I A Keyban Viking 912

D H D Traveler 6807  
**Indreland Juanada Anne 7403**  
 15861521 I A Fore Viking 383

BW		205 Wt			365 Wt			Dam's Nursing Ratio		
95		692			1271			12 - 104		
CED	BW	WW	YW	SC	MILK	MARB	RE	\$M	\$W	
-2	3.4	47	89	.05	30	-.04	.46	49	45	



TAR BRAVO 140 - HE SELLS AS LOT 129.

## 129 TAR BRAVO 140

BULL 20135258 TATTOO 140 DOB: 01/22/21

Coleman Charlo 0256  
**Coleman Bravo 6313**  
 18734838 Coleman Donna 714

O C C Paxton 730P  
 Bohi Abigale 6014  
 Connealy Onward  
 Coleman Donna 386  
 HF Kodiak 5R  
 TLA Beauty 5R  
 O C C Hunter 928H  
 O C C Dixie Erica 948E

Soo Line Motive 9016  
**Tar Dixie Erica 819**  
 19237869 O C C Dixie Erica 626P

BW		205 Wt			365 Wt			Dam's Nursing Ratio		
88		702			1305			2 - 100		
CED	BW	WW	YW	SC	MILK	MARB	RE	\$M	\$W	
8	1.1	55	103	.48	21			61	48	



TAR MAVERICK 164 - HE SELLS AS LOT 130.

## 130 TAR MAVERICK 164

BULL 20139915 TATTOO 164 DOB: 02/05/21

Coleman Charlo 0256  
**Coleman Maverick 5322**  
 18402732 Coleman Donna 3202

O C C Paxton 730P  
 Bohi Abigale 6014  
 Wulffs Ext 6106  
 Coleman Donna 714  
 Cole Creek Black Cedar 46P  
 Cole Creek Clovanada 49S  
 Pine Coulee EXT U160  
 Pine Coulee Emulous W73

Cole Creek Cedar Ridge 1V  
**Tar Emulous 704**  
 18887194 Pine Coulee Emulous C175

BW		205 Wt			365 Wt			Dam's Nursing Ratio		
90		734			1348			3 - 104		
CED	BW	WW	YW	SC	MILK	MARB	RE	\$M	\$W	
9	1.2	53	102	1.40	25			70	50	

## 132 TAR PLAYMAKER 148

BULL 20135261 TATTOO 148 DOB: 01/25/21

GDAR Game Day 449  
**Coleman Playmaker 427**  
 17914039 Coleman Donna 714

Boyd New Day 8005  
 G D A R Miss Wix 474  
 Connealy Onward  
 Coleman Donna 386  
 Coleman Charlo 0256  
 S AV Blackcap May 4136  
 Wulffs Ext 6106  
 TAR Miss Wix 761

S AV President 6847  
**TAR Miss Wix 941**  
 19559500 Tar Miss Wix 216

BW		205 Wt			365 Wt			Dam's Nursing Ratio		
72		710			1289			1 - 104		
CED	BW	WW	YW	SC	MILK	MARB	RE	\$M	\$W	
9	-0.8	59	103	.57	25			76	62	

## 131 TAR MARSHALL 126

BULL 20135254 TATTOO 126 DOB: 01/18/21

S AV Resource 1441  
**Coleman Marshall 7170**  
 19102287 Coleman Donna 197

Rito 707 of Ideal 3407 7075  
 S AV Blackcap May 4136  
 Basin Rainmaker 654X  
 KMK Donna J311  
 O C C Paxton 730P  
 Bohi Abigale 6014  
 D H D Traveler 6807  
 Coleman Miss Wix 923

Coleman Charlo 0256  
**TAR Miss Wix 424**  
 17915948 TAR Miss Wix 876

BW		205 Wt			365 Wt			Dam's Nursing Ratio		
82		719			1220			4 - 101		
CED	BW	WW	YW	SC	MILK	MARB	RE	\$M	\$W	
9	-0.5	48	88	.63	25	.19	.61	72	52	

## 133 TAR MAVERICK 150

BULL 20135262 TATTOO 150 DOB: 01/26/21

Coleman Charlo 0256  
**Coleman Maverick 5322**  
 18402732 Coleman Donna 3202

O C C Paxton 730P  
 Bohi Abigale 6014  
 Wulffs Ext 6106  
 Coleman Donna 714  
 HF Kodiak 5R  
 TLA Beauty 5R  
 Coleman Charlo 0256  
 TAR Miss Wix 876

Soo Line Motive 9016  
**TAR Miss Wix 602**  
 18559450 TAR Miss Wix 424

BW		205 Wt			365 Wt			Dam's Nursing Ratio		
84		694			1136			4 - 100		
CED	BW	WW	YW	SC	MILK	MARB	RE	\$M	\$W	
10	-1.4	44	76	.85	20	.31	.38	62	45	

# % COLEMAN ANGUS TEAM



Earl Dewey

*We want to Thank these  
men for all their hard  
work and dedication,  
each and every day!*



Luke Harl



Moises, Coya, Diego, and Daniel



## DEICHMANN LIVESTOCK BROKERAGE

Dan & Marilyn Deichmann

Over the years, through up and down markets, the Colemans have weathered every storm, producing quality Angus cattle. Today, this program continues to breed top-tier genetics that are the bread and butter of their loyal customers. When you buy bulls here, you're getting the Coleman and Trexler quality to produce the kind of steers and heifers that will keep your herd at the very top of the beef business. Whether you need one bull or a truckload, you are getting the Coleman and Trexler trademark handshake, and integrity of service that's behind every bull sold.

Each year, buying progeny out of this set of bulls is an exciting part of our business. We see firsthand the success of the genetics when they're on the ground, hitting the scales each fall at load-outs around the country. Our feeding customers are loyal to cattle that work and produce in the feed yard. And the females are key as replacements in every herd they are utilized in. Replacement females just don't come any better.

When we purchase Coleman-Trexler genetics, we can count on the cattle to get the job done in the feed year, and that gives us satisfied, repeat feeder customers. We continue to be an enthusiastic marketing arm for Coleman-Trexler sired calves, and look forward to working with you on marketing your feeders. With 35 years experience through all phases of the marketing chain, we look forward to working with Coleman-Trexler bull buyers in merchandising their premium feeders, as both rancher and feeders appreciate superior quality genetics.

Give me a call to visit about marketing your calves or yearlings, or assistance with selecting bulls at the sale. See you on sale day!

Sincerely,  
Dan Deichmann

P O Box 310 • Hobson, MT 59452 | 406-423-5500 • 406-799-5200 • deichmannlivestock@gmail.com

# PERFORMANCE TESTED BULL SALE %



COLEMAN **CHLOE** 034 - FULL SISTER TO THE DAM OF LOT 134.



COLEMAN **JUSTIFIED** 1180 - HE SELLS AS LOT 134.

## 134 COLEMAN JUSTIFIED 1180

BULL 20155620 TATTOO 1180 DOB: 01/26/21

Connealy Judgment  
**KG Justified 3023**  
17707279 KG Miss Magic 1443

Coleman Bravo 6313  
**Coleman Chloe 9147**  
19541343 Lawsons Chloe C815

Connealy Consensus 7229  
Entrine of Conanga 9876  
Sitz Wisdom 481T  
KG Miss Magic 3528  
Coleman Charlo 0256  
Coleman Donna 714  
S AV Renown 3439  
Lawsons Chloe Z341

BW	205 Wt	365 Wt	Dam's Nursing Ratio						
84	844	1351	1 - 105						
CED	BW	WW	YW	SC	MILK	MARB	RE	\$M	\$W
9	0.5	73	133	2.11	31	.79	.39	107	85

## 135 COLEMAN TRIUMPH 1115

BULL 20155594 TATTOO 1115 DOB: 01/20/21

Coleman Bravo 6313  
**Coleman Triumph 9145**  
19555917 Lawsons Chloe C815

O C C Juneau 807J  
**Coleman Donna 769**  
18841172 Coleman Donna 714

Coleman Charlo 0256  
Coleman Donna 714  
S AV Renown 3439  
Lawsons Chloe Z341  
O C C Emblazon 854E  
O C C Dixie Erica 903E  
Connealy Onward  
Coleman Donna 386

BW	205 Wt	365 Wt	Dam's Nursing Ratio						
75	871	1361	2 - 101						
CED	BW	WW	YW	SC	MILK	MARB	RE	\$M	\$W
7	0.2	60	103	1.02	27	.10	.60	85	71



COLEMAN **ROCK** 7200  
FULL BROTHER TO DAM OF LOT 135.



COLEMAN **TRIUMPH** 1115 - HE SELLS AS LOT 135.

# % COLEMAN ANGUS



COLEMAN NATURAL LAW 1142 - HE SELLS AS LOT 139.

## 138 COLEMAN STELLAR 1153

BULL 20155611		TATTOO 1153		DOB: 01/26/21					
Mohren Substantial 272		Benfield Substance 8506		Mohnen Glyn Mawr Elba 1758					
<b>Sitz Stellar 726D</b>		Connealy Final Product		Sitz Pride 308Y					
18397542		SITZ Pride 200B		C H Quantum 6247					
Cole Creek Black Cedar 46P		Cole Creek Clova Juanada 67		Connealy Onward					
<b>Coleman Donna 7114</b>		Coleman Donna 714		Coleman Donna 386					
18935231									
BW		205 Wt		365 Wt		Dam's Nursing Ratio			
92		801		1348		3 - 103			
CED	BW	WW	YW	SC	MILK	MARB	RE	\$M	\$W
8	0.7	68	115	.87	31	.49	.65	83	80

## 136 COLEMAN TRIUMPH 1117

BULL 20155595		TATTOO 1117		DOB: 02/19/21					
Coleman Bravo 6313		Coleman Charlo 0256		Coleman Donna 714					
<b>Coleman Triumph 9145</b>		S A V Renown 3439		Lawsons Chloe Z341					
19555917		Lawsons Chloe C815		Rito 707 of Ideal 3407 7075					
S A V Resource 1441		S A V Blackcap May 4136		O C C Juneau 807J					
<b>Coleman Donna 785</b>		Coleman Donna 040		Coleman Donna 714					
18838393									
BW		205 Wt		365 Wt		Dam's Nursing Ratio			
78		880		1418		3 - 104			
CED	BW	WW	YW	SC	MILK	MARB	RE	\$M	\$W
6	0.2	69	120	.95	22	.12	.95	90	72

## 139 COLEMAN NATURAL LAW 1142

BULL 20155607		TATTOO 1142		DOB: 01/27/21					
S A V Bismarck 5682		G A R Grid Maker		S A V Abigale 0451					
<b>Bar-E-L Natural Law 52Y</b>		Bar E L MCC 365 Icon 20H		Double Four Duchess 12G					
19310190		Bar-E-L Magnolia 143K		N Bar Emulation EXT					
Leachman Right Time		Leachman Erica 0025		Sitz Traveler 8180					
<b>Coleman Abigale 5360</b>		Bohi Abigale 6014		S A V Abigale 6062					
18404492									
BW		205 Wt		365 Wt		Dam's Nursing Ratio			
84		784		1347		4 - 97			
CED	BW	WW	YW	SC	MILK	MARB	RE	\$M	\$W
9	0.9	46	91	.99	26	.28	.39	36	46

## 137 COLEMAN BRAVO 1157

BULL 20155612		TATTOO 1157		DOB: 01/26/21					
Coleman Charlo 0256		O C C Paxton 730P		Bohi Abigale 6014					
<b>Coleman Bravo 6313</b>		Connealy Onward		Coleman Donna 386					
18734838		Coleman Donna 714		Rito 707 of Ideal 3407 7075					
S A V Resource 1441		S A V Blackcap May 4136		Connealy Onward					
<b>Coleman Donna 7232</b>		Coleman Donna 714		Coleman Donna 386					
19110860									
BW		205 Wt		365 Wt		Dam's Nursing Ratio			
84		841		1398		2 - 104			
CED	BW	WW	YW	SC	MILK	MARB	RE	\$M	\$W
10	1.1	71	131	.74	20	.13	.69	77	64

## 140 COLEMAN EXECUTIVE DECISION 172

BULL 20155639		TATTOO 172		DOB: 01/17/21					
Bar-E-L Natural Law 52Y		S A V Bismarck 5682		Bar-E-L Magnolia 143K					
<b>PM Executive Decision 5'17</b>		HF Thunderbird 146Y		Poplar Meadows Blossom 5'10					
19310189		PM Blossom 124'13		Rito 707 of Ideal 3407 7075					
S A V Renown 3439		S A V Blackcap May 4136		Sitz Upward 307R					
<b>Lawsons Chloe C815</b>		Basin Chloe 7T26							
18359250		Lawsons Chloe Z341							
BW		205 Wt		365 Wt		Dam's Nursing Ratio			
97		767		1273		3 - 110			
CED	BW	WW	YW	SC	MILK	MARB	RE	\$M	\$W
4	2.8	74	127	.84	24	.33	1.23	55	73



COLEMAN BRAVO 1157 - HE SELLS AS LOT 137.



COLEMAN DONNA 7232 - DAM OF LOT 137.



# YOUR MATERNAL SOURCE



COLEMAN **BRAVO** 171 - HE SELLS AS LOT 141.

## 141 COLEMAN BRAVO 171

BULL 20167394 TATTOO 171 DOB: 01/11/21

Coleman Charlo 0256  
**Coleman Bravo 6313**  
 18734838 Coleman Donna 714

HF Thunderbird 146Y  
**PM Blossom 124\*13**  
 20132097 Poplar Meadows Blossom 5\*10

O C C Paxton 730P  
 Bohi Abigale 6014  
 Connealy Onward  
 Coleman Donna 386  
 HF Tiger 5T  
 HF Echo 187N  
 HF Tiger 5T  
 Remitall Blossom 253P

	BW	205 Wt			365 Wt		Dam's Nursing Ratio			
	82	743			1263		-			
CED	BW	WW	YW	SC	MILK	MARB	RE	\$M	\$W	
9	1.2	53	97	.83	29	.34	.54	79	64	

## 142 COLEMAN BRAVO 189

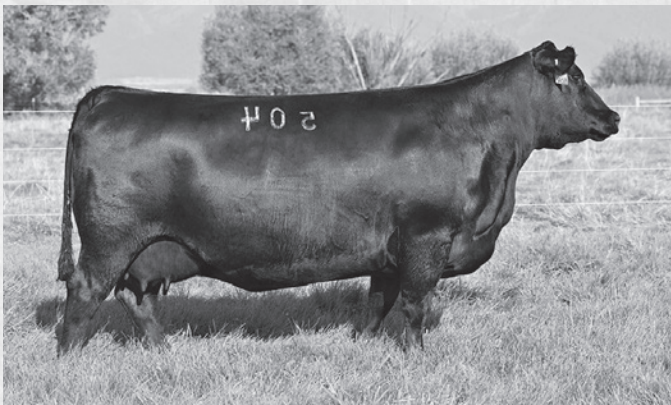
BULL 20155643 TATTOO 189 DOB: 01/16/21

Coleman Charlo 0256  
**Coleman Bravo 6313**  
 18734838 Coleman Donna 714

SAV Resource 1441  
**Coleman Donna 504**  
 18238090 Coleman Donna 714

O C C Paxton 730P  
 Bohi Abigale 6014  
 Connealy Onward  
 Coleman Donna 386  
 Rito 707 of Ideal 3407 7075  
 SAV Blackcap May 4136  
 Connealy Onward  
 Coleman Donna 386

	BW	205 Wt			365 Wt		Dam's Nursing Ratio			
	78	784			1250		3 - 110			
CED	BW	WW	YW	SC	MILK	MARB	RE	\$M	\$W	
11	0.9	72	134	.93	30	.13	.75	83	82	



COLEMAN **DONNA** 504 - DAM OF LOTS 115, 116, 117, 142, 150, AND 160.



COLEMAN **BRAVO** 189 - HE SELLS AS LOT 142.

# % COLEMAN ANGUS



COLEMAN **MARSHALL** 1162 - HE SELLS AS LOT 143.



COLEMAN **BRAVO** 1137 - HE SELLS AS LOT 145.

## 143 COLEMAN MARSHALL 1162

BULL **20155614** TATTOO **1162** DOB: **01/30/21**

S AV Resource 1441  
**Coleman Marshall 7170**  
 19102287 Coleman Donna 197

Coleman Playmaker 427  
**Coleman Dixie Erica 7401**  
 19102697 Coleman Dixie Erica 5362

Rito 707 of Ideal 3407 7075  
 S AV Blackcap May 4136  
 Basin Rainmaker 654X  
 KMK Donna J311  
 GDAR Game Day 449  
 Coleman Donna 714  
 Coleman Charlo 0256  
 Coleman Dixie Erica 3262

BW		205 Wt			365 Wt		Dam's Nursing Ratio		
93		878			1492		2 - 112		
CED	BW	WW	YW	SC	MILK	MARB	RE	\$M	\$W
9	0.8	73	136	1.20	29	.16	.67	71	77

## 145 COLEMAN BRAVO 1137

BULL **20155604** TATTOO **1137** DOB: **01/22/21**

Coleman Charlo 0256  
**Coleman Bravo 6313**  
 18734838 Coleman Donna 714

Coleman Knight 209  
**Coleman Abigale 5219**  
 18402660 Coleman Abigale 0277

O C C Paxton 730P  
 Bohi Abigale 6014  
 Connealy Onward  
 Coleman Donna 386  
 R R Rito 707  
 Coleman Donna 714  
 O C C Paxton 730P  
 Bohi Abigale 6014

BW		205 Wt			365 Wt		Dam's Nursing Ratio		
74		787			1280		4 - 98		
CED	BW	WW	YW	SC	MILK	MARB	RE	\$M	\$W
16	-1.9	53	97	1.22	22	.16	.43	71	55

## 144 COLEMAN BRAVO 166

BULL **20155638** TATTOO **166** DOB: **01/09/21**

Coleman Charlo 0256  
**Coleman Bravo 6313**  
 18734838 Coleman Donna 714

Duff Jetset 7122  
**ZWT Blackcap 1508**  
 17423967 O C C Lady Blackcap 753L

O C C Paxton 730P  
 Bohi Abigale 6014  
 Connealy Onward  
 Coleman Donna 386  
 O C C Jet Stream 825J  
 O C C Revolution Rose 887H  
 O C C Hercules 941H  
 O C C Lady Blackcap 822H

BW		205 Wt			365 Wt		Dam's Nursing Ratio		
74		762			1224		2 - 107		
CED	BW	WW	YW	SC	MILK	MARB	RE	\$M	\$W
10	0.9	54	94	.45	21	.14	.41	72	57

## 146 COLEMAN MARSHALL 1149

BULL **20155609** TATTOO **1149** DOB: **02/16/21**

S AV Resource 1441  
**Coleman Marshall 7170**  
 19102287 Coleman Donna 197

Coleman Playmaker 427  
**Coleman Donna 6440**  
 18734984 Coleman Donna 4388

Rito 707 of Ideal 3407 7075  
 S AV Blackcap May 4136  
 Basin Rainmaker 654X  
 KMK Donna J311  
 GDAR Game Day 449  
 Coleman Donna 714  
 Coleman Regis 122  
 Coleman Donna 0258

BW		205 Wt			365 Wt		Dam's Nursing Ratio		
91		856			1283		3 - 104		
CED	BW	WW	YW	SC	MILK	MARB	RE	\$M	\$W
8	0.5	62	107	.90	26			83	64



COLEMAN **MARSHALL** 1149 - HE SELLS AS LOT 146.

*"Hello Larry, We just shipped our heifers and steers. The ravos and Summitts are as good as we have had in a long time. Steers weighed 635, and heifers 600, April calves. The Bravos and Summitts were weighing 670 -685. Will get you a video on those heifers, they are as good as I have seen in a long time. We will be using those bulls again!"*

*Thanks  
 Jeff Harwood  
 Geyser, Montana*

# PERFORMANCE TESTED BULL SALE %

## 147 COLEMAN MARSHALL 1138

BULL 20155605 TATTOO 1138 DOB: 02/16/21

S AV Resource 1441  
**Coleman Marshall 7170**  
 19102287 Coleman Donna 197

Connealy Onward  
**Coleman Donna 5220**  
 18402661 Coleman Donna 197

Rito 707 of Ideal 3407 7075  
 S AV Blackcap May 4136  
 Basin Rainmaker 654X  
 KMK Donna J311  
 Connealy Lead On  
 Altune of Conanga 6104  
 Basin Rainmaker 654X  
 KMK Donna J311

BW		205 Wt			365 Wt			Dam's Nursing Ratio		
90		852			1215			4 - 106		
CED	BW	WW	YW	SC	MILK	MARB	RE	\$M	\$W	
9	0.9	55	98	1.17	28	.01	.72	87	60	



COLEMAN MARSHALL 1138 - HE SELLS AS LOT 147.

## 148 COLEMAN NATURAL LAW 1140

BULL 20155606 TATTOO 1140 DOB: 01/24/21

S AV Bismarck 5682  
**Bar-E-L Natural Law 52Y**  
 19310190 Bar-E-L Magnolia 143K

Coleman Charlo 0256  
**Coleman Donna 5319**  
 18402729 Coleman Donna 3213

G A R Grid Maker  
 S AV Abigale 0451  
 Bar E L MCC 365 Icon 20H  
 Double Four Duchess 12G  
 O C C Paxton 730P  
 Bohi Abigale 6014  
 Leachman Right Time  
 Coleman Donna 714

BW		205 Wt			365 Wt			Dam's Nursing Ratio		
84		748			1250			4 - 106		
CED	BW	WW	YW	SC	MILK	MARB	RE	\$M	\$W	
9	0.2	48	89	.87	26	.36	.55	49	50	



COLEMAN NATURAL LAW 1140 - HE SELLS AS LOT 148.

## 149 COLEMAN ROCK 1163

BULL 20155615 TATTOO 1163 DOB: 02/01/21

O C C Juneau 807J  
**Coleman Rock 7200**  
 19107936 Coleman Donna 714

S AV Resource 1441  
**Coleman Prides of Lass 7513**  
 19110857 Coleman Prides of Lass 8114

O C C Emblazon 854E  
 O C C Dixie Erica 903E  
 Connealy Onward  
 Coleman Donna 386  
 Rito 707 of Ideal 3407 7075  
 S AV Blackcap May 4136  
 S AV Net Worth 4200  
 Coleman Prides of Lass 461

BW		205 Wt			365 Wt			Dam's Nursing Ratio		
93		816			1306			2 - 101		
CED	BW	WW	YW	SC	MILK	MARB	RE	\$M	\$W	
3	1.7	68	112	.93	22	.11	.77	55	69	



COLEMAN ROCK 1163 - HE SELLS AS LOT 149.

## 150 COLEMAN JUSTIFIED 130

BULL 20155630 TATTOO 130 DOB: 01/20/21

Connealy Judgment  
**KG Justified 3023**  
 17707279 KG Miss Magic 1443

S AV Resource 1441  
**Coleman Donna 504**  
 18238090 Coleman Donna 714

Connealy Consensus 7229  
 Etrine of Conanga 9876  
 Sitz Wisdom 481T  
 KG Miss Magic 3528  
 Rito 707 of Ideal 3407 7075  
 S AV Blackcap May 4136  
 Connealy Onward  
 Coleman Donna 386

BW		205 Wt			365 Wt			Dam's Nursing Ratio		
78		760			1280			3 - 110		
CED	BW	WW	YW	SC	MILK	MARB	RE	\$M	\$W	
16	-2.0	65	114	1.11	24	.61	.52	92	75	



COLEMAN DONNA 504 - DAM OF LOTS 115, 116, 117, 142, 150, AND 160.

# % COLEMAN ANGUS

“We shipped our calves yesterday. Here’s what has changed since we bought our first set of Coleman Angus bulls last year. Averages were 836 for the steers and 761 for the heifers. 140 pound increase on steers and 100 pound increase on the heifers from the past 3 years. Rennaker said they were the heaviest and best looking calves that he’s bought all year. Thank You!!

Joe Geldrich

## 153 COLEMAN SUPERCHARGER 1207

BULL 20161555 TATTOO 1207 DOB: 01/12/21  
 SAV Recharge 3436 Rito 707 of Ideal 3407 7075  
**SAV Supercharger 6813** SAV Blackcap May 4136  
 18579297 SAV Madame Pride 0075 SAV F 598 Bando 5175  
 GDAR Game Day 449 SAV Madame Pride 8264  
**Coleman Donna 439** Boyd New Day 8005  
 17914042 Coleman Donna 714 G D A R Miss Wix 474  
 Connealy Onward  
 Coleman Donna 386

BW		205 Wt			365 Wt			Dam's Nursing Ratio		
84		730			1167			5 - 107		
CED	BW	WW	YW	SC	MILK	MARB	RE	\$M	\$W	
9	0.6	52	97	1.09	23	-.13	.67	65	51	

## 151 COLEMAN MARSHALL 1145

BULL 20155608 TATTOO 1145 DOB: 02/18/21  
 SAV Resource 1441 Rito 707 of Ideal 3407 7075  
**Coleman Marshall 7170** SAV Blackcap May 4136  
 19102287 Coleman Donna 197 Basin Rainmaker 654X  
 Connealy Onward KMK Donna J311  
**Coleman Donna 6106** Connealy Lead On  
 18570019 Coleman Donna 197 Altune of Conanga 6104  
 Basin Rainmaker 654X  
 KMK Donna J311

BW		205 Wt			365 Wt			Dam's Nursing Ratio		
80		842			1319			4 - 108		
CED	BW	WW	YW	SC	MILK	MARB	RE	\$M	\$W	
14	-1.1	50	97	.14	30	.11	.76	74	58	

## 154 COLEMAN RENOWN 1216

BULL 20155625 TATTOO 1216 DOB: 01/11/21  
 Rito 707 of Ideal 3407 7075 R R Rito 707  
**SAV Renown 3439** Ideal 3407 of 1418 076  
 17633839 SAV Blackcap May 4136 SAV 8180 Traveler 004  
 SAV May 2397  
 O C C Paxton 730P  
**Coleman Charlo 0256** Bohi Abigale 6014  
**Coleman Donna 6314** Connealy Onward  
 18734953 Coleman Donna 714 Coleman Donna 386

BW		205 Wt			365 Wt			Dam's Nursing Ratio		
92		720			1232			3 - 101		
CED	BW	WW	YW	SC	MILK	MARB	RE	\$M	\$W	
4	1.8	65	116	.63	20	.22	.73	64	62	

## 152 COLEMAN SUPERCHARGER 1204

BULL 20161549 TATTOO 1204 DOB: 01/11/21  
 SAV Recharge 3436 Rito 707 of Ideal 3407 7075  
**SAV Supercharger 6813** SAV Blackcap May 4136  
 18579297 SAV Madame Pride 0075 SAV F 598 Bando 5175  
 SAV Madame Pride 8264  
 GDAR Game Day 449 Boyd New Day 8005  
**Coleman Donna 439** G D A R Miss Wix 474  
 17914042 Coleman Donna 714 Connealy Onward  
 Coleman Donna 386

BW		205 Wt			365 Wt			Dam's Nursing Ratio		
82		719			1137			5 - 107		
CED	BW	WW	YW	SC	MILK	MARB	RE	\$M	\$W	
9	0.6	52	97	.62	23	-.13	.67	65	51	

## 155 COLEMAN EXECUTIVE DECISION 192

BULL 20155644 TATTOO 192 DOB: 01/09/21  
 Bar-E-L Natural Law 52Y SAV Bismarck 5682  
**PM Executive Decision 5'17** Bar-E-L Magnolia 143K  
 19310189 PM Blossom 124'13 HF Thunderbird 146Y  
 Poplar Meadows Blossom 5'10  
 Rito 707 of Ideal 3407 7075  
 SAV Renown 3439 SAV Blackcap May 4136  
**Lawsons Chloe C815** Sitz Upward 307R  
 18359250 Lawsons Chloe Z341 Basin Chloe 7T26

BW		205 Wt			365 Wt			Dam's Nursing Ratio		
77		753			1167			3 - 110		
CED	BW	WW	YW	SC	MILK	MARB	RE	\$M	\$W	
0	2.6	80	140	1.19	22	.30	.79	82	77	

## 156 COLEMAN HONCHO 1224

BULL 20161557 TATTOO 1224 DOB: 01/19/21  
 Bar Wick Eureka 943 310 O C C Eureka 865E  
**Duff Honcho 426** O C C Dixie Erica 943D  
 18135257 Duff BI 619 LadyPop 1017 Duff Basic Instinct 6501  
 Duff NL B351 Lady Pop 619  
 Basin Rainmaker 654X Basin Rainmaker D S 380U  
**Coleman Everelda Entense2321** Basin Bardolene 423U  
 17702924 Coleman Everelda Entense 578 Wulffs Ext 6106  
 Sitz Everelda Entense 4789

BW		205 Wt			365 Wt			Dam's Nursing Ratio		
87		769			1206			5 - 109		
CED	BW	WW	YW	SC	MILK	MARB	RE	\$M	\$W	
5	-0.2	40	68	.62	30	.04	.23	49	51	



COLEMAN EVERELDA ENTENSE 2321 - DAM OF LOTS 156, 185, AND 188.

# YOUR MATERNAL SOURCE



COLEMAN **CHARLO** 112 - HE SELLS AS LOT 157.

## 157 COLEMAN CHARLO 112

BULL 20155597 TATTOO 112 DOB: 01/04/21

O C C Paxton 730P  
**Coleman Charlo 0256**  
 16879074 Bohi Abigale 6014

GDAR Game Day 449  
**Coleman Donna 439**  
 17914042 Coleman Donna 714

O C C Focus 813F  
 O C C Blackbird 736K  
 Sitz Traveler 8180  
 S A V Abigale 6062  
 Boyd New Day 8005  
 G D A R Miss Wix 474  
 Connealy Onward  
 Coleman Donna 386

BW		205 Wt		365 Wt		Dam's Nursing Ratio			
CED	BW	WW	YW	SC	MILK	MARB	RE	\$M	\$W
12	-0.6	47	88	.85	27	.00	.58	74	60



COLEMAN **DONNA** 909  
 - MATERNAL SISTERS TO  
 LOTS 1, 61, 75, 83, 152, 153,  
 157, 158, 159, 181, AND  
 186.



COLEMAN **RENOWN** 029 -  
 MATERNAL BROTHER TO LOTS 1,  
 61, 75, 83, 152, 153, 157, 158, 159,  
 181, AND 186.



COLEMAN **DONNA** 720 - MATERNAL SISTER TO LOTS 1, 61, 75, 83,  
 152, 153, 157, 158, 159, 181, AND 186.



COLEMAN **DONNA** 439 - DAM OF LOTS 1, 61, 75, 83, 152, 153, 157,  
 158, 159, 181, AND 186.

# % COLEMAN ANGUS



COLEMAN **CHARLO** 120 - HE SELLS AS LOT 158.

COLEMAN **DONNA** 439 - DAM OF LOTS 1, 61, 75, 83, 152, 153, 157, 158, 159, 181, AND 186.

## 158 COLEMAN CHARLO 120

BULL 20155623 TATTOO 120 DOB: 01/10/21

O C C Paxton 730P  
**Coleman Charlo 0256**  
 16879074 Bohi Abigale 6014

GDAR Game Day 449  
**Coleman Donna 439**  
 17914042 Coleman Donna 714

O C C Focus 813F  
 O C C Blackbird 736K  
 Sitz Traveler 8180  
 S A V Abigale 6062  
 Boyd New Day 8005  
 G D A R Miss Wix 474  
 Connealy Onward  
 Coleman Donna 386

BW		205 Wt		365 Wt		Dam's Nursing Ratio			
73		740		1246		5 - 107			
CED	BW	WW	YW	SC	MILK	MARB	RE	\$M	\$W
12	-0.6	47	88	.49	27	.00	.58	74	60

## 159 COLEMAN CHARLO 119

BULL 20155622 TATTOO 119 DOB: 01/09/21

O C C Paxton 730P  
**Coleman Charlo 0256**  
 16879074 Bohi Abigale 6014

GDAR Game Day 449  
**Coleman Donna 439**  
 17914042 Coleman Donna 714

O C C Focus 813F  
 O C C Blackbird 736K  
 Sitz Traveler 8180  
 S A V Abigale 6062  
 Boyd New Day 8005  
 G D A R Miss Wix 474  
 Connealy Onward  
 Coleman Donna 386

BW		205 Wt		365 Wt		Dam's Nursing Ratio			
74		751		1289		5 - 107			
CED	BW	WW	YW	SC	MILK	MARB	RE	\$M	\$W
12	-0.6	47	88	.95	27	.00	.58	74	60



COLEMAN **GLACIER** 041 - MATERNAL BROTHER TO LOTS 1, 61, 75, 83, 152, 153, 157, 158, 159, 181, 186, AND WHO SELLS AS LOT 1.



COLEMAN **ACE** 989 - MATERNAL BROTHER TO LOTS 1, 61, 75, 83, 152, 153, 157, 158, 159, 181, AND 186.



COLEMAN **CHARLO** 119 - HE SELLS AS LOT 159.

# PERFORMANCE TESTED BULL SALE %

## 160 COLEMAN CHARLO 1210

BULL 20155624 TATTOO 1210 DOB: 01/09/21

O C C Paxton 730P

**Coleman Charlo 0256**

16879074 Bohi Abigale 6014

S A V Resource 1441

**Coleman Donna 504**

18238090 Coleman Donna 714

BW		205 Wt			365 Wt			Dam's Nursing Ratio		
87		721			1236			3 - 110		
CED	BW	WW	YW	SC	MILK	MARB	RE	\$M	\$W	
9	0.4	62	120	1.17	29	.17	.65	74	72	



COLEMAN CHARLO 1210 - HE SELLS AS LOT 160.

## 161 COLEMAN BRAVO 1125

BULL 20155600 TATTOO 1125 DOB: 01/17/21

Coleman Charlo 0256

**Coleman Bravo 6313**

18734838 Coleman Donna 714

Coleman Navigator 614

**Coleman Donna 988**

19539787 Coleman Donna 3347

BW		205 Wt			365 Wt			Dam's Nursing Ratio		
71		772			1394			1 - 96		
CED	BW	WW	YW	SC	MILK	MARB	RE	\$M	\$W	
14	-0.7	60	113	.55	22			73	56	



COLEMAN BRAVO 1125 - HE SELLS AS LOT 161.

## 162 COLEMAN BRAVO 150

BULL 20155635 TATTOO 150 DOB: 01/21/21

Coleman Charlo 0256

**Coleman Bravo 6313**

18734838 Coleman Donna 714

Duff Jetset 7122

**ZWT Blackcap 1508**

17423967 O C C Lady Blackcap 753L

BW		205 Wt			365 Wt			Dam's Nursing Ratio		
74		730			1157			2 - 107		
CED	BW	WW	YW	SC	MILK	MARB	RE	\$M	\$W	
10	0.9	54	94	.13	21	.14	.41	72	57	



COLEMAN BRAVO 150 - HE SELLS AS LOT 162.

## 163 COLEMAN CHARLO 107

BULL 20155589 TATTOO 107 DOB: 01/09/21

O C C Paxton 730P

**Coleman Charlo 0256**

16879074 Bohi Abigale 6014

S A V Renown 3439

**Lawsons Chloe C815**

18359250 Lawsons Chloe Z341

BW		205 Wt			365 Wt			Dam's Nursing Ratio		
77		682			1143			3 - 110		
CED	BW	WW	YW	SC	MILK	MARB	RE	\$M	\$W	
9	-0.8	63	109	.42	25	.09	.67	75	76	



COLEMAN CHARLO 107 - HE SELLS AS LOT 163.

# % COLEMAN ANGUS



COLEMAN **MARSHALL** 1159 - HE SELLS AS LOT 164.

## 164 COLEMAN MARSHALL 1159

BULL 20155613 TATTOO 1159 DOB: 02/13/21  
 S AV Resource 1441  
**Coleman Marshall 7170**  
 19102287 Coleman Donna 197  
 Coleman Juneau 044  
**Coleman Anita 7262**  
 19102666 Pine Coulee Anita W93  
 Rito 707 of Ideal 3407 7075  
 S AV Blackcap May 4136  
 Basin Rainmaker 654X  
 KMK Donna J311  
 O C C Juneau 807J  
 Coleman Donna 714  
 N Bar Emulation EXT  
 B C C Ambush Anita 41-101

BW		205 Wt			365 Wt			Dam's Nursing Ratio	
80			812	SC	1255		2 - 102		
CED	BW	WW	YW	SC	MILK	MARB	RE	\$M	\$W
9	-0.8	55	94	.18	25	-.03	.67	83	61

## 165 COLEMAN BRAVO 187

BULL 20155642 TATTOO 187 DOB: 01/18/21  
 Coleman Charlo 0256  
**Coleman Bravo 6313**  
 18734838 Coleman Donna 714  
 Duff Jetset 7122  
**ZWT Blackcap 1508**  
 17423967 O C C Lady Blackcap 753L  
 O C C Paxton 730P  
 Bohi Abigale 6014  
 Connealy Onward  
 Coleman Donna 386  
 O C C Jet Stream 825J  
 O C C Revolution Rose 887H  
 O C C Hercules 941H  
 O C C Lady Blackcap 822H

BW		205 Wt			365 Wt			Dam's Nursing Ratio	
84			739	SC	1262		2 - 107		
CED	BW	WW	YW	SC	MILK	MARB	RE	\$M	\$W
10	0.9	54	94	.64	21	.14	.41	72	57



ZWT **BLACKCAP** 1508 - DAM OF LOT 144, 162, 165, 166, AND 167.

## 166 COLEMAN CHARLO 111

BULL 20155592 TATTOO 111 DOB: 01/14/21  
 O C C Paxton 730P  
**Coleman Charlo 0256**  
 16879074 Bohi Abigale 6014  
 Duff Jetset 7122  
**ZWT Blackcap 1508**  
 17423967 O C C Lady Blackcap 753L  
 O C C Focus 813F  
 O C C Blackbird 736K  
 Sitz Traveler 8180  
 S AV Abigale 6062  
 O C C Jet Stream 825J  
 O C C Revolution Rose 887H  
 O C C Hercules 941H  
 O C C Lady Blackcap 822H

BW		205 Wt			365 Wt			Dam's Nursing Ratio	
74			710	SC	1200		2 - 107		
CED	BW	WW	YW	SC	MILK	MARB	RE	\$M	\$W
6	1.1	52	89	1.12	24	.30	.45	61	60



COLEMAN **CHARLO** 111 - HE SELLS AS LOT 166.

## 167 COLEMAN BRAVO 162

BULL 20155637 TATTOO 162 DOB: 01/21/21  
 Coleman Charlo 0256  
**Coleman Bravo 6313**  
 18734838 Coleman Donna 714  
 Duff Jetset 7122  
**ZWT Blackcap 1508**  
 17423967 O C C Lady Blackcap 753L  
 O C C Paxton 730P  
 Bohi Abigale 6014  
 Connealy Onward  
 Coleman Donna 386  
 O C C Jet Stream 825J  
 O C C Revolution Rose 887H  
 O C C Hercules 941H  
 O C C Lady Blackcap 822H

BW		205 Wt			365 Wt			Dam's Nursing Ratio	
78			749	SC	1072		2 - 107		
CED	BW	WW	YW	SC	MILK	MARB	RE	\$M	\$W
10	0.9	54	94	.28	21	.14	.41	72	57



COLEMAN **BRAVO** 162 - HE SELLS AS LOT 167.



# TREXLER ANGUS



TAR LOGO 121 - HE SELLS AS LOT 168.



TAR MAVERICK 156 - HE SELLS AS LOT 170.

## 168 TAT LOGO 121

BULL 20135251 TATTOO 121 DOB: 01/16/21

SITZ Logo 12964  
**Coleman Logo 947**  
 19559369 Coleman Donna 7100  
 S A V President 6847  
**TAR Miss Wix 921**  
 19559494 Tar Miss Wix 521

Sitz Tebow 11860  
 SITZ Shauna 3152  
 S A V Resource 1441  
 Coleman Donna 714  
 Coleman Charlo 0256  
 S A V Blackcap May 4136  
 Coleman Charlo 0256  
 Tar Miss Wix 212

BW		205 Wt			365 Wt			Dam's Nursing Ratio	
72		754			1237			1 - 111	
CED	BW	WW	YW	SC	MILK	MARB	RE	\$M	\$W
12	-1.0	70	112	.97	22			106	72

## 171 TAR MAVERICK 177

BULL 20135273 TATTOO 177 DOB: 02/24/21

Coleman Charlo 0256  
**Coleman Maverick 5322**  
 18402732 Coleman Donna 3202  
 Tar Ext 221  
**Tar Miss Wix 533**  
 18241234 TAR Miss Wix 876

O C C Paxton 730P  
 Bohi Abigale 6014  
 Wulffs Ext 6106  
 Coleman Donna 714  
 Wulffs Ext 6106  
 Coleman Miss Wix 923  
 D H D Traveler 6807  
 Coleman Miss Wix 923

BW		205 Wt			365 Wt			Dam's Nursing Ratio	
88		726						5 - 99	
CED	BW	WW	YW	SC	MILK	MARB	RE	\$M	\$W
10	-0.9	46	85	.82	23			60	45

## 169 TAR BRAVO 106

BULL 20139912 TATTOO 106 DOB: 01/11/21

Coleman Charlo 0256  
**Coleman Bravo 6313**  
 18734838 Coleman Donna 714  
 Coleman Playmaker 427  
**Tar Bett 803**  
 19233032 Tar Bett 643

O C C Paxton 730P  
 Bohi Abigale 6014  
 Connealy Onward  
 Coleman Donna 386  
 GDAR Game Day 449  
 Coleman Donna 714  
 Pine Coulee Traveler 39B  
 TAR Bett 130

BW		205 Wt			365 Wt			Dam's Nursing Ratio	
78		685			1234			2 - 97	
CED	BW	WW	YW	SC	MILK	MARB	RE	\$M	\$W
13	-1.0	51	93	.99	22			77	49

## 172 TAR CHARLO 141

BULL 20139914 TATTOO 141 DOB: 01/22/21

O C C Paxton 730P  
**Coleman Charlo 0256**  
 16879074 Bohi Abigale 6014  
 Apex Windy 078  
**Tar Donna 520**  
 18242194 TAR Donna 133

O C C Focus 813F  
 O C C Blackbird 736K  
 Sitz Traveler 8180  
 S A V Abigale 6062  
 H A R B Windy 702 JH  
 Apexette Lucy 6037  
 O C C Paxton 730P  
 Coleman Donna 6154

BW		205 Wt			365 Wt			Dam's Nursing Ratio	
83		636			1174			5 - 96	
CED	BW	WW	YW	SC	MILK	MARB	RE	\$M	\$W
7	0.4	44	78	1.16	23			56	43

## 170 TAR MAVERICK 156

BULL 20135263 TATTOO 156 DOB: 01/30/21

Coleman Charlo 0256  
**Coleman Maverick 5322**  
 18402732 Coleman Donna 3202  
 Tar Charlo 303  
**Tar Blackcap 535**  
 18241236 TAR Blackcap 325

O C C Paxton 730P  
 Bohi Abigale 6014  
 Wulffs Ext 6106  
 Coleman Donna 714  
 Coleman Charlo 0256  
 Coleman Donna 6154  
 Tar EXT 931  
 TAR Blackcap 775

BW		205 Wt			365 Wt			Dam's Nursing Ratio	
82		728			1224			5 - 103	
CED	BW	WW	YW	SC	MILK	MARB	RE	\$M	\$W
15	-1.9	43	78	.86	24			65	46



TAR CHARLO 141 - HE SELLS AS LOT 172.

# TREXLER ANGUS



TAR BRAVO 144 - HE SELLS AS LOT 173.

## 175 TAR PLAYMAKER 102

BULL 20135249		TATTOO 102		DOB: 01/08/21					
GDAR Game Day 449		Boyd New Day 8005		G D A R Miss Wix 474					
<b>Coleman Playmaker 427</b>		Connealy Onward		Coleman Donna 386					
17914039		Coleman Donna 714		Wulffs Ext 6106					
Coleman Doc 2261		Coleman Donna 989		Tar EXT 931					
<b>Tar Enchantress 917</b>		VC Enchantress 8167							
19540596		Tar Enchantress 219							
BW		205 Wt		365 Wt		Dam's Nursing Ratio			
60		663		1194		1 - 97			
CED	BW	WW	YW	SC	MILK	MARB	RE	\$M	\$W
11	-2.6	49	84	.42	22			74	52

## 176 TAR TRAVELER 131

BULL 20135255		TATTOO 131		DOB: 01/19/21					
FairView Traveler 1171		Sitz Traveler 043		Shadybrook Ever Entense 164H					
<b>Pine Coulee Traveler 39B</b>		Connealy Impression		MW Black Nellie Rita 845					
17978197		MW Black Nellie Rita 032		R R Rito 707					
Coleman Knight 209		Coleman Donna 714		O C C Paxton 730P					
<b>Tar Dixie Erica 845</b>		Coleman Dixie Erica 8282							
19232902		Coleman Dixie Erica 0153							
BW		205 Wt		365 Wt		Dam's Nursing Ratio			
84		672		1238		1 - 99			
CED	BW	WW	YW	SC	MILK	MARB	RE	\$M	\$W
6	1.4	49	84	1.67	23			70	47

## 177 TAR PLAYMAKER 133

BULL 20135256		TATTOO 133		DOB: 01/20/21					
GDAR Game Day 449		Boyd New Day 8005		G D A R Miss Wix 474					
<b>Coleman Playmaker 427</b>		Connealy Onward		Coleman Donna 386					
17914039		Coleman Donna 714		S A V Renown 3439					
ZWT Summitt 6507		Coleman Donna 714		Apex Windy 078					
<b>TAR Miss Wix 931</b>		TAR Miss Wix 407		TAR Miss Wix 005					
19540705									
BW		205 Wt		365 Wt		Dam's Nursing Ratio			
82		661		1234		1 - 97			
CED	BW	WW	YW	SC	MILK	MARB	RE	\$M	\$W
6	0.4	56	101	.73	22			75	52

## 173 TAR BRAVO 144

BULL 20135259		TATTOO 144		DOB: 01/23/21					
Coleman Charlo 0256		O C C Paxton 730P		Bohi Abigale 6014					
<b>Coleman Bravo 6313</b>		Connealy Onward		Coleman Donna 386					
18734838		Coleman Donna 714		FairView Traveler 1171					
Pine Coulee Traveler 39B		MW Black Nellie Rita 032		Tar Ext 221					
<b>Tar Countess 846</b>		TAR Countess 235 V962							
19229559		Tar Countess 539							
BW		205 Wt		365 Wt		Dam's Nursing Ratio			
77		636		1191		2 - 97			
CED	BW	WW	YW	SC	MILK	MARB	RE	\$M	\$W
14	-1.2	45	84	1.32	23			86	45

## 174 TAR REBOUND 160

BULL 20135265		TATTOO 160		DOB: 01/30/21					
S A V Renown 3439		Rito 707 of Ideal 3407 7075		S A V Blackcap May 4136					
<b>Coleman Rebound 7220</b>		Connealy Onward		Coleman Donna 386					
19102306		Coleman Donna 714		Cole Creek Black Cedar 46P					
Cole Creek Black Cedar 1100		Cole Creek Juanada Bird 38N		Apex Windy 078					
<b>Tar Donna 729</b>		TAR Donna 133							
18888364		Tar Donna 520							
BW		205 Wt		365 Wt		Dam's Nursing Ratio			
95		683		1190		3 - 99			
CED	BW	WW	YW	SC	MILK	MARB	RE	\$M	\$W
-3	3.2	51	90	.53	27			77	47

“We have been very impressed with how your bulls have held up for us. We run in dry foothills and mountains of Eastern Washington with 8-11 inches of annual precipitation all on open range land and no irrigated pastures. Your bulls have worked so well and held their condition so well that we are able to use them both in our spring herd and fall herds through the winter. Your bulls produce thick calves with heavy weaning weights, and keep on performing when we retain ownership. We consistently see 90% or better Prime and Choice carcasses also. We have been impressed enough to have collected a couple of the bulls and have AI'd several hundred cows to them, and those half-sisters are making phenomenal cows in our herd. Thanks Colemans and Trexlers.”

Cass Gebbers, Gebbers Farms, Brewster, WA

# COLEMAN ANGUS %

## 178 COLEMAN JUSTIFIED 1123

BULL 20155598 TATTOO 1123 DOB: 01/20/21

Connealy Judgment  
**KG Justified 3023**  
 17707279 KG Miss Magic 1443

Coleman Bravo 6313  
**Coleman Chloe 975**  
 19483324 Lawsons Chloe C815

Connealy Consensus 7229  
 Entrine of Conanga 9876  
 Sitz Wisdom 481T  
 KG Miss Magic 3528  
 Coleman Charlo 0256  
 Coleman Donna 714  
 S AV Renown 3439  
 Lawsons Chloe Z341

BW		205 Wt			365 Wt			Dam's Nursing Ratio		
CED	BW	WW	YW	SC	MILK	MARB	RE	\$M	\$W	
8	0.0	78	143	1.07	23	.57	.91	86	80	



COLEMAN CHLOE 975 - DAM OF LOT 178.

## 179 COLEMAN ROCK 1174

BULL 20155617 TATTOO 1174 DOB: 01/31/21

O C C Juneau 807J  
**Coleman Rock 7200**  
 19107936 Coleman Donna 714

Coleman Playmaker 427  
**Coleman Donna 8438**  
 19400665 Coleman Donna 6248

O C C Emblazon 854E  
 O C C Dixie Erica 903E  
 Connealy Onward  
 Coleman Donna 386  
 GDAR Game Day 449  
 Coleman Donna 714  
 Coleman Charlo 0256  
 Coleman Donna 3121

BW		205 Wt			365 Wt			Dam's Nursing Ratio		
CED	BW	WW	YW	SC	MILK	MARB	RE	\$M	\$W	
8	-0.1	74	123	.52	30	.16	.38	75	87	

## 182 COLEMAN MARSHALL 1136

BULL 20155603 TATTOO 1136 DOB: 02/18/21

S AV Resource 1441  
**Coleman Marshall 7170**  
 19102287 Coleman Donna 197

O C C Great Plains 943G  
**Coleman Donna 5207**  
 18410196 Coleman Donna 714

Rito 707 of Ideal 3407 7075  
 S AV Blackcap May 4136  
 Basin Rainmaker 654X  
 KMK Donna J311  
 N Bar Emulation EXT  
 Dixie Erica of CH 1019  
 Connealy Onward  
 Coleman Donna 386

BW		205 Wt			365 Wt			Dam's Nursing Ratio		
CED	BW	WW	YW	SC	MILK	MARB	RE	\$M	\$W	
15	-1.8	47	90	.05	30	-.12	.71	56	59	

## 180 COLEMAN NAVIGATOR 1229

BULL 20155629 TATTOO 1229 DOB: 01/07/21

Cole Creek Black Cedar 46P  
**Coleman Navigator 614**  
 18570027 Coleman Eriskay 291

RR 7407 Rainmaker 2154  
**TLA Beauty 5R**  
 17262980 Terrlene Beauty 35F

CH Quantum 6247  
 Cole Creek Clova Juanada 67  
 Coleman Juneau 044  
 Sinclair Eriskay 2N1 7883  
 A A R Rainmaker 7407  
 H A Concepciona 0224  
 Terrlene Executive Pride 10D  
 KBJ Beauty 257B

BW		205 Wt			365 Wt			Dam's Nursing Ratio		
CED	BW	WW	YW	SC	MILK	MARB	RE	\$M	\$W	
4	0.7	52	87	.69	22	.25	.48	51	52	

## 183 COLEMAN ROCK 1175

BULL 20155618 TATTOO 1175 DOB: 02/02/21

O C C Juneau 807J  
**Coleman Rock 7200**  
 19107936 Coleman Donna 714

Coleman Charlo 3212  
**Coleman Everelda Entense 8600**  
 19492039 Coleman Everelda Entense 2423

O C C Emblazon 854E  
 O C C Dixie Erica 903E  
 Connealy Onward  
 Coleman Donna 386  
 Coleman Charlo 0256  
 Coleman Donna 714  
 Coleman Regis 904  
 Coleman Everelda Entense 582

BW		205 Wt			365 Wt			Dam's Nursing Ratio		
CED	BW	WW	YW	SC	MILK	MARB	RE	\$M	\$W	
8	-0.9	63	97	.92	29	.26	.68	112	85	

## 181 COLEMAN SUPERCHARGER 1205

BULL 20161552 TATTOO 1205 DOB: 01/10/21

S AV Recharge 3436  
**S AV Supercharger 6813**  
 18579297 S AV Madame Pride 0075

GDAR Game Day 449  
**Coleman Donna 439**  
 17914042 Coleman Donna 714

Rito 707 of Ideal 3407 7075  
 S AV Blackcap May 4136  
 S A F 598 Bando 5175  
 S AV Madame Pride 8264  
 Boyd New Day 8005  
 G D A R Miss Wix 474  
 Connealy Onward  
 Coleman Donna 386

BW		205 Wt			365 Wt			Dam's Nursing Ratio		
CED	BW	WW	YW	SC	MILK	MARB	RE	\$M	\$W	
9	0.6	52	97	1.00	23	-.13	.67	65	51	



COLEMAN SUPERCHARGER 1205 - HE SELLS AS LOT 181.

# % COLEMAN ANGUS & TREXLER ANGUS



COLEMAN EVERELDA ENTENSE 2321 - DAM OF LOTS 156, 185, AND 188.

“We’ve been using Larry Trexler’s bulls for the last four years. We are really happy with the quality of the calves, and our weaning weights have gone up. We are very pleased with these bulls and we plan to continue using them.”

Bob Gingerich  
Montana

## 184 COLEMAN NAVIGATOR 1228

BULL 20155628 TATTOO 1228 DOB: 01/05/21

Coleman Navigator 614  
18570027  
Coleman Eriskay 291  
RR 7407 Rainmaker 2154  
TLA Beauty 5R  
17262980  
Terrlene Beauty 35F

C H Quantum 6247  
Cole Creek Clova Juanada 67  
Coleman Juneau 044  
Sinclair Eriskay 2N1 7883  
A A R Rainmaker 7407  
H A Concepciona 0224  
Terrlene Executive Pride 10D  
KBJ Beauty 257B

BW		205 Wt			365 Wt			Dam's Nursing Ratio		
70		680			1181			2 - 101		
CED	BW	WW	YW	SC	MILK	MARB	RE	\$M	\$W	
4	0.7	52	87	.52	22	.25	.48	51	52	

## 187 COLEMAN PLAYMAKER 1181

BULL 20155621 TATTOO 1181 DOB: 03/26/21

Coleman Playmaker 427  
17914039  
Coleman Donna 714  
ZWT Summitt 6507  
Coleman Dixie Erica 953  
19539781  
Coleman Dixie Erica 7117

GDAR Game Day 449  
Boyd New Day 8005  
G D A R Miss Wix 474  
Connealy Onward  
Coleman Donna 386  
S A V Renown 3439  
Coleman Donna 714  
Coleman Charlo 0256  
Coleman Dixie Erica 8273

BW		205 Wt			365 Wt			Dam's Nursing Ratio		
82		792			1221			1 - 99		
CED	BW	WW	YW	SC	MILK	MARB	RE	\$M	\$W	
9	-0.5	58	101		25			86	60	

## 185 COLEMAN HONCHO 1227

BULL 20161560 TATTOO 1227 DOB: 01/12/21

Duff Honcho 426  
18135257  
Duff BI 619 LadyPop 1017  
Basin Rainmaker 654X  
Coleman Everelda Entense 2321  
17702924  
Coleman Everelda Entense 578

O C C Eureka 865E  
O C C Dixie Erica 943D  
Duff Basic Instinct 6501  
Duff NL B351 Lady Pop 619  
Basin Rainmaker D S 380U  
Basin Bardolene 423U  
Wulffs Ext 6106  
Sitz Everelda Entense 4789

BW		205 Wt			365 Wt			Dam's Nursing Ratio		
82		712			1107			5 - 109		
CED	BW	WW	YW	SC	MILK	MARB	RE	\$M	\$W	
5	-0.2	40	68	.28	30	.04	.23	53	51	

## 189 TAR REBOUND 162

BULL 20135266 TATTOO 162 DOB: 01/31/21

Coleman Rebound 7220  
19102306  
Coleman Donna 714  
Tar Charlo 303  
Tar Blackcap 839  
19229557  
Tar Blackcap 607

S A V Renown 3439  
Rito 707 of Ideal 3407 7075  
S A V Blackcap May 4136  
Connealy Onward  
Coleman Donna 386  
Coleman Charlo 0256  
Coleman Donna 6154  
Connealy Thunder  
TAR Blackcap 325

BW		205 Wt			365 Wt			Dam's Nursing Ratio		
82		738			1221			2 - 104		
CED	BW	WW	YW	SC	MILK	MARB	RE	\$M	\$W	
6	0.1	55	94	.62	28			77	61	

## 186 COLEMAN SUPERCHARGER 1206

BULL 20161554 TATTOO 1206 DOB: 01/14/21

S A V Supercharger 6813  
18579297  
S A V Madame Pride 0075  
GDAR Game Day 449  
Coleman Donna 439  
17914042  
Coleman Donna 714

Rito 707 of Ideal 3407 7075  
S A V Blackcap May 4136  
S A F 598 Bando 5175  
S A V Madame Pride 8264  
Boyd New Day 8005  
G D A R Miss Wix 474  
Connealy Onward  
Coleman Donna 386

BW		205 Wt			365 Wt			Dam's Nursing Ratio		
82		703			1090			5 - 107		
CED	BW	WW	YW	SC	MILK	MARB	RE	\$M	\$W	
9	0.6	52	97	.48	23	-.13	.67	65	51	

## 190 TAR CHARLO 134

BULL 20135257 TATTOO 134 DOB: 01/20/21

Tar Charlo 303  
17607322  
Coleman Donna 6154  
Pine Coulee Traveler 39B  
Tar Everelda Entense 847  
19229560  
TAR Everelda Entense 427

Coleman Charlo 0256  
O C C Paxton 730P  
Bohi Abigale 6014  
Wulffs Ext 6106  
KMK Donna J311  
FairView Traveler 1171  
MW Black Nellie Rita 032  
Coleman Final Answer 222  
TAR Everelda Entense 103

BW		205 Wt			365 Wt			Dam's Nursing Ratio		
78		620			1145			2 - 97		
CED	BW	WW	YW	SC	MILK	MARB	RE	\$M	\$W	
10	0.1	36	65	1.07	24			81	36	

# TREXLER ANGUS

## 191 TAR BRAVO 170

BULL 20135271 TATTOO 170 DOB: 02/11/21

Coleman Bravo 6313  
**TAR Bravo 903**  
 19540745 TAR Donna 030  
 Coleman Charlo 0256  
**TAR Miss Wix 922**  
 19540569 Tar Miss Wix 533

BW		205 Wt			365 Wt		Dam's Nursing Ratio		
78		682			1178		1 - 100		
CED	BW	WW	YW	SC	MILK	MARB	RE	\$M	\$W
9	-0.4	41	73	1.09	23			74	41



TAR BRAVO 170 - HE SELLS AS LOT 191.

## 192 TAR REBOUND 168

BULL 20135270 TATTOO 168 DOB: 02/10/21

S A V Renown 3439  
**Coleman Rebound 7220**  
 19102306 Coleman Donna 714  
 Soo Line Motive 9016  
**Tar JUANADA813**  
 19237866 Coleman Juanada 280

BW		205 Wt			365 Wt		Dam's Nursing Ratio		
85		622			1184		2 - 89		
CED	BW	WW	YW	SC	MILK	MARB	RE	\$M	\$W
7	0.7	49	91	-1.12	23			74	46

## 195 TAR REBOUND 179

BULL 20135274 TATTOO 179 DOB: 02/28/21

S A V Renown 3439  
**Coleman Rebound 7220**  
 19102306 Coleman Donna 714  
 Coleman Charlo 0256  
**Tar Wandering Creek 801**  
 19232857 Tar Wandering Creek 649

BW		205 Wt			365 Wt		Dam's Nursing Ratio		
82		726			1184		2 - 107		
CED	BW	WW	YW	SC	MILK	MARB	RE	\$M	\$W
5	0.9	61	109	.74	28			75	63

## 193 TAR REBOUND 182

BULL 20135276 TATTOO 182 DOB: 03/12/21

S A V Renown 3439  
**Coleman Rebound 7220**  
 19102306 Coleman Donna 714  
 Soo Line Motive 9016  
**Tar Everelda Entense 823**  
 19237863 Tar Everelda Entense 530

BW		205 Wt			365 Wt		Dam's Nursing Ratio		
85		713			1184		2 - 105		
CED	BW	WW	YW	SC	MILK	MARB	RE	\$M	\$W
4	1.0	56	100	.33	27			87	58

## 196 TAR MAVERICK 180

BULL 20139916 TATTOO 180 DOB: 03/04/21

Coleman Charlo 0256  
**Coleman Maverick 5322**  
 18402732 Coleman Donna 3202  
 Pine Coulee Traveler 39B  
**Tar BY Design 840**  
 19229558 S M A Prospector By Design

BW		205 Wt			365 Wt		Dam's Nursing Ratio		
78		646			1184		2 - 101		
CED	BW	WW	YW	SC	MILK	MARB	RE	\$M	\$W
12	-0.8	44	81		26			74	47

## 194 TAR REBOUND 181

BULL 20135275 TATTOO 181 DOB: 03/09/21

S A V Renown 3439  
**Coleman Rebound 7220**  
 19102306 Coleman Donna 714  
 Coleman Knight 209  
**Tar Bett 728**  
 18887284 TAR Bett 623

BW		205 Wt			365 Wt		Dam's Nursing Ratio		
80		681			1178		3 - 96		
CED	BW	WW	YW	SC	MILK	MARB	RE	\$M	\$W
7	0.5	48	85	.43	24			74	48

## 197 TAR REBOUND 125

BULL 20135253 TATTOO 125 DOB: 01/18/21

S A V Renown 3439  
**Coleman Rebound 7220**  
 19102306 Coleman Donna 714  
 Coleman Charlo 0256  
**Tar Everelda Entense 804**  
 19232858 Tar Everelda Entense 638

BW		205 Wt			365 Wt		Dam's Nursing Ratio		
80		655			1066		2 - 100		
CED	BW	WW	YW	SC	MILK	MARB	RE	\$M	\$W
8	-0.3	47	79	-1.12	26			76	52

# % YOUR MATERNAL SOURCE - COLEMAN ANGUS %

**A**t Coleman Angus, maternal matters. Our philosophy in breeding Angus has always been the mother cow. The mother cow makes the difference in everything we do in this industry. The Coleman program has been built the old fashion way in the pasture, where maternal is measured by production records, calving intervals, udder quality, mature size, longevity, fertility, and Pathfinder still means something. We don't believe in throwing computer-generated number out there to confuse or mislead you, we believe in "real world" data.

We demand our cows to raise big calves, rebreed on time, and do this for years. We place emphasis on these desired traits for both seedstock and commercial cattlemen and have continued to be a part of the Maternal Plus program at Coleman Angus. This program places emphasis on the \$M index, an index for commercial cattlemen and breeders alike. The \$M incorporates the following traits CED, BW, WW, Milk, MW, HP, Doc, CEM, Foot Angle, Claw Set, and Fertility. If you sell your cattle at weaning or retain heifers, we recommend you take a look at the \$M index on this set of bulls.



## COLEMAN HERD FACTS:

- % The entire Coleman Angus herd ranks in the Top 11% for Current Dams.
- % The entire Coleman Angus herd ranks in the Top 15% for Non-Parent Dams.
- % The entire Coleman Angus herd is 39% higher than breed average for Current Dams.
- % The entire Coleman Angus herd is 35% higher than breed average for Non-Parent Dams.
- % The average \$M for Current Dams in the Coleman herd is 74 and breed average is 57.
- % The average \$M for Non-Parent female in the Coleman herd is 76 and breed average is 62.



COLEMAN **DONNA** 0308  
THIS PHOTO TAKEN AT 11 YEARS OF AGE

COLEMAN **DONNA** 040  
THIS PHOTO TAKEN AT 11 YEARS OF AGE

Coleman Donna 0308 is a Pathfinder female that is 11 years old and the #1 \$M female in the breed. Coleman Donna 040 is a Pathfinder female that is 11 years old and the #2 \$M female in the breed. This is the definition of our philosophy at Coleman Angus.

## HOW TO PARTICIPATE AS AN ABSENTEE BUYER

We have made preparations to bid and buy livestock through Superior Productions' "Call or Click-To-Bid" service for those unable to attend in person on 2/15/22. Please note that all of the lots in the sale will also be available for viewing online prior to sale day at [www.superiorlivestock.com](http://www.superiorlivestock.com) and [www.colemanangus.com](http://www.colemanangus.com).

**HERE'S HOW IT WORKS TURN IN BIDS OVER THE PHONE.** This is our traditional method of buying livestock and is the suggested process for anyone who does not have consistent, high-speed internet. To get started simply go online to [www.superiorlivestock.com](http://www.superiorlivestock.com) and click on the tab titled "**Register for a Buyer Number**". Select the registration form for Superior Productions and print the registration form. Fill it out and fax it in to Superior Productions at (817) 378-3380 with a signature on it. You can also mail it in to the address provided on the form. Upon receipt of this information Superior will call you with a buyer's number and the bid line phone number that you will use on sale day to place bids over the phone.

**CLICK-TO-BID.** This is Superior's online bidding program for cattle buying. Please note that **high speed internet is required** – this is not for dial-up or satellite internet. Registration is free, but you must become a member of [www.superiorclicktobid.com](http://www.superiorclicktobid.com) to sign up. **Becoming a member is easy** – just go to the homepage of [www.superiorclicktobid.com](http://www.superiorclicktobid.com) and follow the out-lined steps to get started. Input your information and select a username and password. You will receive an e-mail confirming you are a member. From that point forward you just have to sign in and select the sale you would like to register for and once approved by the ranch you will receive an e-mail confirming which sale you are now registered for.

**VIEWING THE AUCTION.** The sale will be **broadcast via satellite on Dish Network channel 998**. Please note that there is a delay if you are watching the auction on television so be sure to call in a couple lots ahead of the lot you are interested in bidding on. The sale will also be broadcast live on the internet at both [www.superiorlivestock.com](http://www.superiorlivestock.com) and [www.superiorclicktobid.com](http://www.superiorclicktobid.com). The video feed on the homepage of [www.superiorlivestock.com](http://www.superiorlivestock.com) looks the same as the video feed on TV and can be watched over a smartphone or tablet. Remember you can call in to bid whether watching on the TV or on the internet, but you must be a member of [www.superiorclicktobid.com](http://www.superiorclicktobid.com) to "click-to-bid".

Buyers will be contacted by the ranch after the sale for payment and delivery details. **IF YOU NEED ANY ASSISTANCE CALL SUPERIOR AT (800) 422-2117.**



## HAND SHAKE GUARANTEE

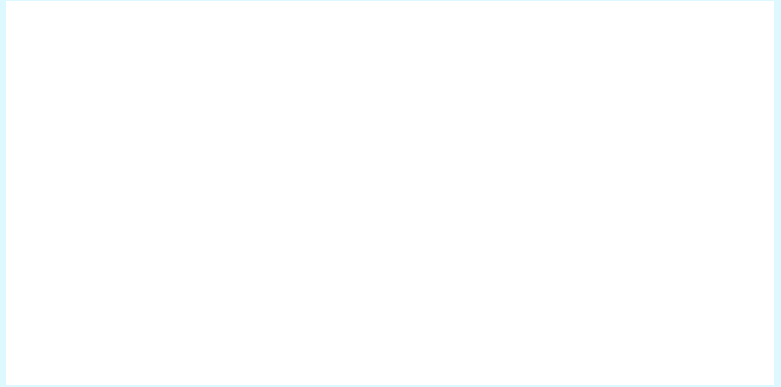


We may be a little old fashioned but we still believe in a good old "Hand Shake" as our guarantee.

We stand behind our program and these bulls 100%, if there's any problem at all in the first breeding season, even death, these bulls are fully guaranteed. We don't ask you to buy insurance, we believe it's our responsibility to stand behind our product. We do understand that sometimes accidents can happen, it's very simple, please give us a call, and we will make it right. Look on the Inside Front Cover about our First Season Breeding Guarantee.

# COLEMAN ANGUS

40067 Morris Road  
Charlo, MT 59824



## ANNUAL *Performance Tested* BULL SALE

Tuesday • **February 15, 2022** • 1:00 p.m. (MST)

Five Valleys Livestock • Missoula, Montana

### **SELLING 200 SERVICE-AGE BULLS**

**125** 18-Month-Old Bulls • **75** Big, Stout, Yearling Bulls • Many of these bulls will work on heifers.

